



System Remote Control SR-250 Setup Guide

Use and Features

Control4 System Remote Control SR-250 (Model C4-SR250B-Z-B) is intended for use in a Control4 system with OS 2.0 and later. It is included with the purchase of select Control4 Controllers, but may also be purchased separately. This System Remote Control can be used to:

- Navigate system menus and access media databases on a television or monitor
- Navigate system menus and access media databases in its own display window
- Control system devices

This System Remote Control goes beyond a typical “universal” remote that simply learns IR codes from TVs, VCRs, CD players, and DVD players. This device features:

- Bi-directional communication with system components
- ZigBee wireless mesh networking
- Full access to system components
- Back-lighting on keys and display for ease of use in dark rooms
- Ambient light sensor for efficient control of backlighting
- Quick-access buttons to select recently used audio and video devices
- Programmable buttons
- Paging functionality
- Standard control features for: Digital Satellite Systems (DSS), cable boxes, TV tuners, Digital Video Recorders (DVR), DVD changers/players, CD changers/players, MP3 players, VCRs, or TVs.
- Powered by four (4) AA batteries (included)

Install and Maintain the Batteries

Install the Batteries

Install the four (4) AA batteries (included) into the back of the SR-250. Insert them according to the diagram provided in the battery compartment (with the + and - terminals aligned correctly).

Battery Use and Care Tips

- Keep the battery contacts and compartment clean.
- Remove the batteries from the product if it is not going to be used for several months.
- Extreme temperatures reduce battery performance. Avoid putting the SR-250 in very warm places.

Battery Replacement Safety Rules

- WARNING!** To prevent a battery short, leakage or rupture:
 - Use typical AA Alkaline batteries only.
 - Do not mix battery types, such as Alkaline and rechargeable NiMH batteries.
 - Do not attempt to recharge a battery unless the battery is specifically marked “rechargeable.”
 - Never dispose of batteries in a fire.



ATTENTION! Pour empêcher court-circuiter, fuite ou rupture de batterie: Utilisez les accumulateurs alcalins typiques d’AA seulement.

- Ne mélangez pas les types de batterie, tels que les batteries alcalines et rechargeables de NiMH.
- N’essayez pas de recharger une batterie à moins que la batterie soit spécifiquement marqué « rechargeable ».
- Ne vous débarrassez jamais des batteries dans un feu.



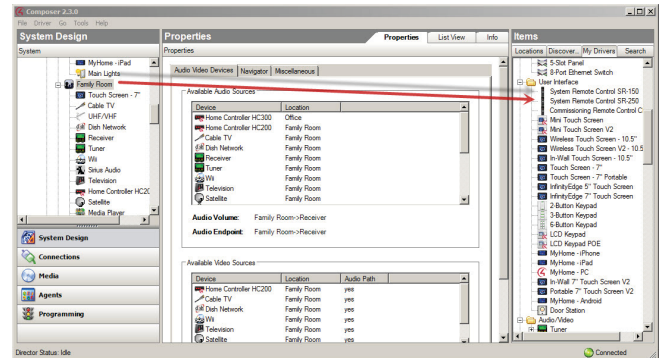
VORSICHT! Das Batteriekurzschluß, -durchsickern oder -abbruch verhindern:

- Benutzen Sie AA alkalische Batterien nur im Schalter.
- Mischen Sie nicht Batteriearten, wie alkalische und nachladbare NiMH Batterien.
- Versuchen Sie nicht, eine Batterie neuzuladen, es sei denn die Batterie ist spezifisch gekennzeichnetes „nachladbares.“
- Entledigen Sie nie sich Batterien in einem Feuer.

Configure the Remote Control

- 1 Start Composer Pro and connect to a Director.
- 2 In the System Design view (selected by default), select the room where the System Remote Control will reside.
- 3 In the My Drivers tab, locate the System Remote Control SR-250 in the User Interface section (Figure 1).

Figure 1. Select the SR-250 driver



- 4 Double-click the SR-250 to add the device to the project tree.
- 5 Identify the SR-250:
 - In the Connections view, click the **Network** tab.
 - Select the **System Remote Control SR-250** in the center pane.
 - Click **Identify** (or right-click and choose **Identify**).
 - When prompted to do so, press the red 4 button four (4) times to identify the device to the Control4 system (Figure 2).

Figure 2. Identify the SR-250

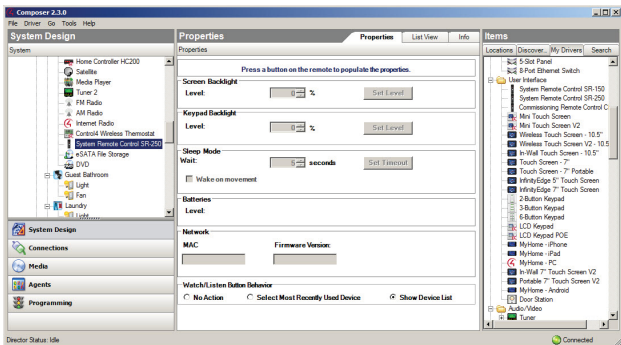


NOTE: To complete the identification process, the SR-250 must be on the same ZigBee channel as the controller, and the controller must have Zserver enabled. If you need to change the ZigBee channel on the SR-250, see Step 7.

- When the MAC address appears in the window, click **Close**.

6 View or change the SR-250 properties as needed in the System Design view, project tree. Select the **System Remote Control SR-250** object to display the device's properties (Figure 3).

Figure 3. SR-250 properties



The properties are:

- **Display Brightness**—Set the light level (brightness) of the screen backlight. Choose a percentage from 0 (Off) to 100 (full brightness).
- **Keypad Brightness**—Set the light level (brightness) of the keypad backlight. Choose a percentage from 0 (Off) to 100 (full brightness).
- **Sleep Mode**—Set how long the System Remote Control stays awake after no activity. The default setting is 15 seconds, but can be extended up to 60 seconds or can be reduced down to 0 to conserve battery life.
- **Battery Level**—Displays the current strength of the batteries.
- **Channel**—Displays the ZigBee channel set for the SR-250, which should match the ZigBee channel for the Controller.
- **Gateway**—Displays the MAC address of the Zigbee Server (usually your Controller unless you specify differently).
- **MAC**—Displays the System Remote Control's own MAC address.
- **Firmware Version**—Displays the current firmware version.

7 Check or change the ZigBee Channel. If you need to change the ZigBee channel to match the controller's channel (sometimes changed to improve reception), do the following at the SR-250:

- Press the **List** button, and then select **Info > Config**.
- Press buttons **2, 4, 8, 6, #, ***, **List** (in that order) to get into Edit mode.
- On-menu List, Info, and Config:
 - Display Brightness
 - Keypad Brightness
 - Motion Detect
 - Battery Level
 - Factory Default
 - About
- Press the **up** or **down** arrows to change the ZigBee channel.
- Press **List** to exit Edit mode and save the changes.

Program the Programmable Buttons

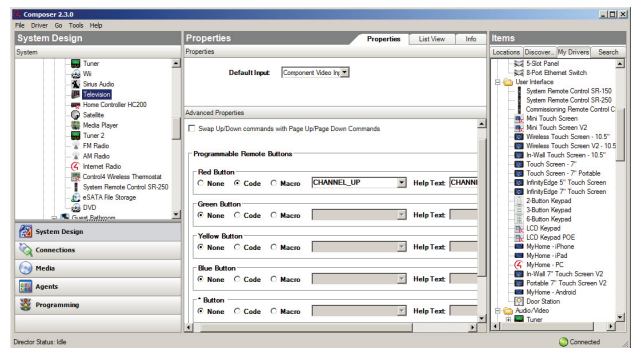
On the System Remote Control SR-250, you can program six (6) soft buttons (Red, Green, Yellow, Blue, *, and #) to perform specific activities, for example, to execute any of the AV device's macros or IR codes.

Program these buttons using the AV device properties page.

- 1 Start Composer Pro and connect to a Director.
- 2 Ensure the System Design view is selected.
- 3 Ensure that you have the following devices in your project:
 - Controller
 - System Remote Control SR-250
 - An AV device to be controlled
- 4 Select the **Connections** view.
- 5 On the Network tab, ensure the controller and the SR-250 are both identified (have a network address).

6 Program the programmable buttons (Red, Green, Yellow, Blue, *, or #) either based on the selected AV device or the selected room (Figure 4).

Figure 4. Programmable buttons



Based on AV Device (Pictured):

- Select the **System Design** view.
- Select an AV device to display the device's Properties page.
- On the device's Properties page, choose **Code** or **Macro** for the button you want to program. Choose a code or macro from the drop-down list, edit the help text as needed, and then choose **Set**.



NOTE: Help text describes custom programming to users under the House option in any of the Navigators.

For example:

- (1) In System Design view, select **Disc Changer**.
- (2) Under **Red** button, choose **Code**.
- (3) From the drop-down list, choose **Subtitle**.
- (4) Choose the **Set** button to create a Subtitle button.

Based on Room:

- Select the **Programming** view.
- Select a **room** in the Device Events pane.
- Select the **Commands** radio button in the [Room] Events pane.
- Use the drop-down menu to select a command or button (for example, "Blue Button").
- Build the script using items from the Actions pane to program the actions desired in the room when you select the command or button.
- For more information about programming, see the *Composer Pro User Guide*.

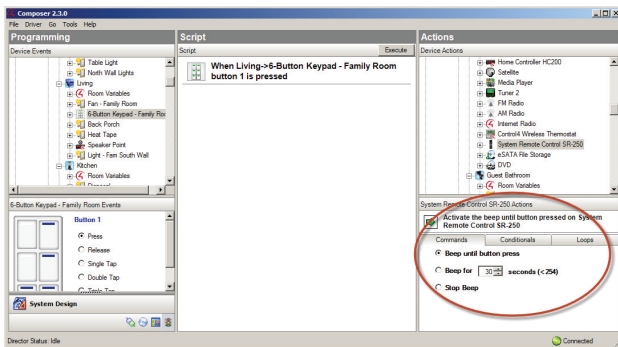
Program System Remote Control Paging

You can configure the Beep paging feature on the SR-250 through programming to page the remote if it's misplaced. Program a keypad or custom button to cause the remote to beep when the keypad button pressed.

To program the paging feature for the remote:

- 1 Start Composer Pro and connect to a Director.
- 2 Select the Programming view.
- 3 Select the Event that you want to use to start the page. For example, to select a keypad button press, first select the **keypad** under the Device Event section (on the left), and then select the **button** under Events.
- 4 In the Actions list (on the right), select **System Remote Control SR-250**.
- 5 In the Commands list, choose an action for the System Remote Control, and then double-click the green arrow to add the action to the Script pane (Figure 5).

Figure 5. Sample programming



- **Beep until button press**—The System Remote Control beeps until you press one of its buttons.
- **Beep for X seconds (<254)**—The System Remote Control beeps until X seconds have elapsed, or you press one of its buttons.
- **Stop Beep**—The System Remote Control stops beeping.

Regulatory/Safety Information

To review Regulatory information for your particular Control4 products, see the information located on the Control4 website at: <http://www.control4.com/regulatory/>.

Warranty

For complete warranty information, including details on consumer legal rights as well as warranty exclusions, review the Warranty card or visit www.control4.com/warranty.

About this Document

Part Number: 200-00071 Rev. H 1/30/2013

control4.com | 888.400.4070

