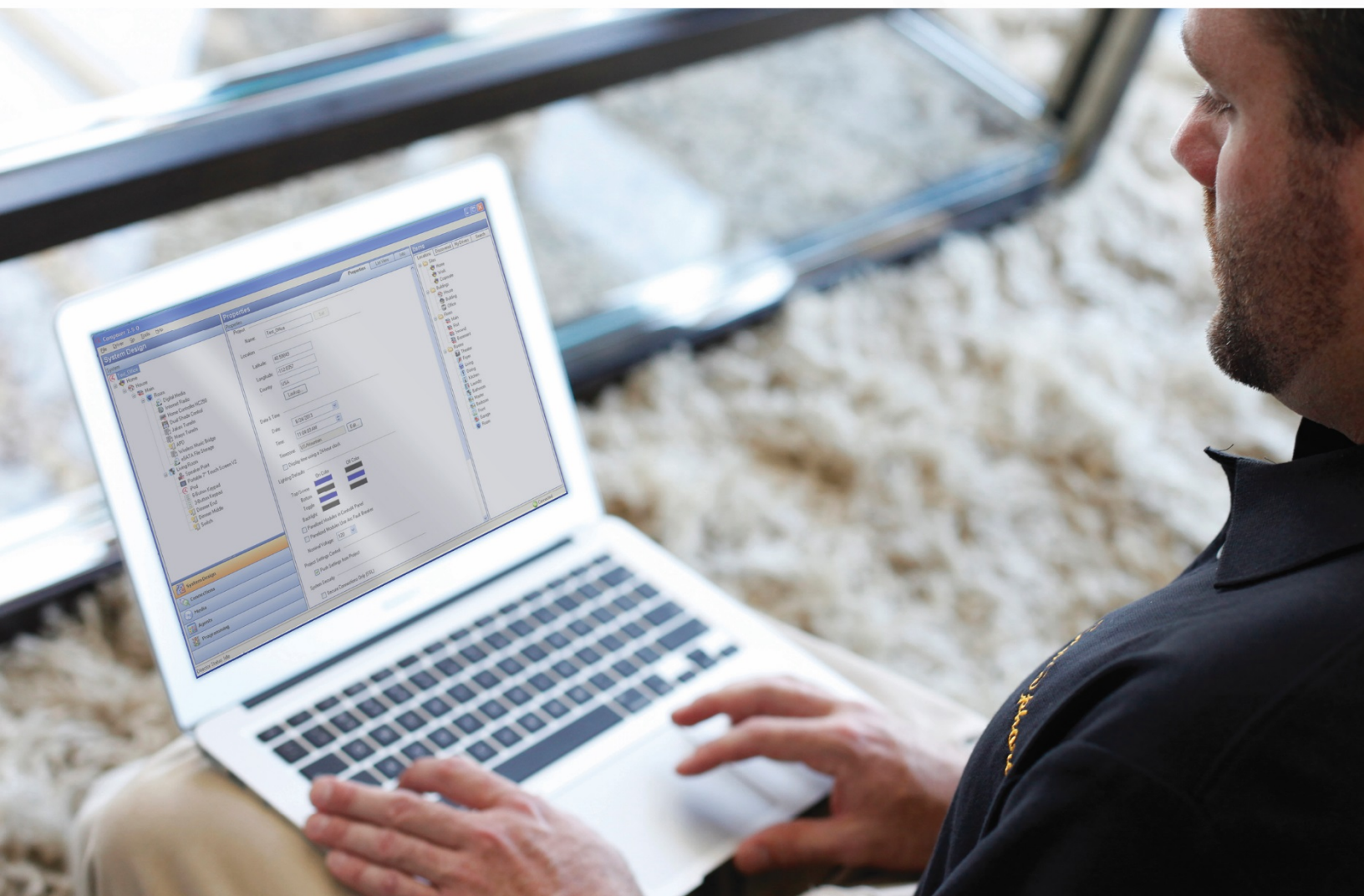


Composer Pro Getting Started



Control4 disclaimer

Control4[®] makes no representations or warranties with respect to this publication, and specifically disclaims any express or implied warranties of merchantability or fitness for any particular purpose. Control4 reserves the right to make changes to any and all parts of this publication at any time, without any obligation to notify any person or entity of such changes.

Legal Notices

GNU

GNU GENERAL PUBLIC LICENSE TERMS AND CONDITIONS FOR COPYING, DISTRIBUTION AND MODIFICATION (Section 3.b.)

You may copy and distribute the Program (or a work based on it, under Section 2) in object code or executable form under the terms of Sections 1 and 2 above provided that you also do one of the following:

Accompany it with a written offer, valid for at least three years, to give any third party, for a charge no more than your cost of physically performing source distribution, a complete machine-readable copy of the corresponding source code, to be distributed under the terms of Sections 1 and 2 on a medium customarily used for software interchange.

The complete text for this license is available on the Control4 web site at: <http://www.control4.com>.

Gracenote

Gracenote[®], Gracenote logo and logotype, and the "Powered by Gracenote" logo are either a registered trademark or a trademark of Gracenote, Inc. in the United States and/or other countries. Music and DVD recognition technology and related data are provided by Gracenote[®]. Gracenote is the industry standard in Music and DVD recognition technology and related content delivery. For more information visit www.gracenote.com.

MPEG

Fraunhofer IIS and Thomson. MPEG Layer-3 audio coding technology licensed from Fraunhofer IIS and Thomson. Supply of this product does not convey a license nor imply any right to distribute content created with this product in revenue-generating broadcast systems (terrestrial, satellite, cable, and /or other distribution channels), streaming applications (via Internet, intranets, and/or other networks), other content distribution systems (pay-audio or audio-on-demand applications, and the like) or on physical media (compact discs, digital versatile discs, semiconductor chips, hard drives, memory cards, and the like). An independent license for such use is required. For details, visit <http://mp3licensing.com>. Radio Locator is the service provider of AM/FM channel list.

Spread

This product uses software developed by Spread Concepts LLC for use in the Spread toolkit. For more information about Spread see <http://www.spread.org>.

All Media Guide

© 2005-2008 All Media Guide, LLC provides music and video recognition technology that provides cover art and related text that enriches the Control4 user Navigators.

Copyright and Trademarks

Copyright ©2017, Control4 Corporation. All rights reserved. Control4, the Control4 logo, the 4-ball logo, 4Sight, Control4 My Home, and Mockupancy are registered trademarks or trademarks of Control4 Corporation in the United States and/or other countries. All other names and brands may be claimed as the property of their respective owners. All specifications subject to change without notice.

No part of this publication may be reproduced, photocopied, stored on a retrieval system, or transmitted without the express written consent of the publisher.

Contact Information

Control4 Corporation
11734 S. Election Road
Salt Lake City, UT 84020 USA
<http://www.control4.com>

Part number: 200-00168-S

Composer Professional Edition Getting Started (OS 2.10) 09/05/2017 DH

Contents

- Control4 disclaimer 1
- Contents 3
- Introduction..... 5
 - Purpose 5
 - Related documents and resources..... 5
 - Composer Pro overview 5
 - Setting up the Control4 system—overview 6
 - Composer Pro system requirements 7
- Installing the hardware and software 8
 - Installing and connecting the hardware 8
 - Installing Composer Pro software 9
- Exploring Composer Pro features..... 11
 - First page..... 11
 - Composer Pro startup options..... 11
 - Start Composer Pro 11
 - Exit Composer Pro 13
 - Composer Pro views 13
 - Available views..... 13
- Connecting to a Director 64
 - Connecting to a virtual system 65
 - Saving changes when working virtually 65
 - Using Virtual mode..... 65
 - Connecting to a Director on a local network..... 66
 - Setting up Remote Access 67
 - Connecting to a Director using Remote Access..... 68
 - Requirements..... 68
 - Connecting using Remote Access 68
 - Ensuring that Director and Composer are compatible 69
- Designing the Control4 system 70
 - Introduction 71
 - Purpose of device drivers 72
 - Adding items to the project tree..... 72
 - Building a project in System Design 73
 - Composer Pro design methods 78
 - Planning a Composer Pro project: Create a plan 78
 - Home automation design methods 79

Using Composer views to build a project.....	80
Making and testing the connections	80
Connecting the hardware	80
Testing the device connections	80
Testing network connections	81
Testing control and AV connections	81
Testing room connections	81
Registering the Control4 system.....	81
Register the system at customer.control4.com	81
Register the controller from Composer Pro	82
Register the controller from a Navigator	84
Setting up a 4Sight subscription	85
Managing and assigning Composer Pro licenses	86
Where to go from here.....	86
Contacting Control4 technical support	87
Other resources	87
Project build example using system design.....	87
Adding a controller.....	87
Adding keypad and electrical interfaces.....	88
Adding AV components	88
Adding a touch screen.....	92
Finishing the project	92
Glossary	93
Index.....	96

Introduction

Use the Control4® Composer Professional Edition (Composer Pro) application to design and create projects for the Control4 system.

Purpose

The purpose of this document is to give Control4 dealers and Installers instructions, tips, and examples about how to use the Composer Pro application.

Related documents and resources

Document Title	Location
Composer Pro User Guide	PDF: Composer Pro User Guide
Control4 System User Guide	PDF: ctrl4.co/userguide
Managing Dealer Accounts on My.Control4.Com and Dealer Licensing	PDF: http://www.control4.com/docs/product/dealer-account/dealer-instructions/english/latest
Composer Pro Software Release Update Instructions – 1.8.2 to 2.0 (TechDoc00012)	Control4 Knowledgebase
Instructional videos	Dealer Portal

Composer Pro overview

This document is for new Control4 dealers or installers who want to learn how to use Composer Pro in the Control4 Operating System Release 2.10 (OS 2.10) or later, or for those who want to keep up with the latest changes. If you are already familiar with Composer Pro, you may only want to know what has changed from the last release. If this is the case, see “What's new in this release” or “Where to go from here” for more advanced information about Composer Pro, and then search for your subjects in the [Composer Pro User Guide](#).

The Control4 system is a combination of Control4 and third-party controllable devices, for example, HDTVs, DVDs, CD players, speakers, home theaters, lights (and so on) that communicate with one another via TCP/IP, infrared (IR), serial, contact, or relay connections.

Composer Professional Edition (Composer Pro) is the software application that Control4 dealers and/or installers use to design and set up a Control4 system project for home automation in a consumer's home or business. The software runs on either a Windows 7, 8, or Windows Vista computer, and provides a powerful graphical interface for object-based programming. When connected to a Control4 controller, the project's information is then communicated to Director on the controller. Director, in turn, uses the configuration information and device drivers to communicate to the devices in the home automation system.

Note: *Composer Pro 2.6.0 and above is not compatible with Windows XP*

The sections in this *Getting Started* document provide basic information and steps for Control4 dealers and installers to become familiar with and start using the Composer Pro interface for initial design and setup of a Control4 system.

Information beyond the basics described in this guide (for intermediate and advanced users of Composer Pro) is provided in the [Composer Pro User Guide](#).

Setting up the Control4 system—overview

Setting up a fully functional Control4 system includes the following major procedures.

For best results, Control4 recommends that you follow the procedures in this order:

- 1 **Install and connect the hardware**—When deploying a Control4 system, install and connect the essential devices:
 - A Control4 controller (for example, an EA-3)
 - A Windows-based computer to set up and configure the home automation system using Composer Pro
 - The device to be controlled (for example, touch screen, DVD player, speakers, lights, Dock for iPod, etc.)
 - A controller and PC connection to the home network
- 2 **Purchase the required licenses**—To use Composer Pro for your company or your employees, you'll need to purchase and assign licenses. See the document [Managing Dealer Accounts on My.Control4.Com](#) for details.
- 3 **Install the Composer Pro software**—Use the Composer Pro installation software to install Composer on a PC and activate it using your my.control4.com dealer user account.
- 4 **Connect to a Director**— Each time you start Composer on your PC, you either connect to Director running on a local or remote controller (live connection) or a virtual Director running on your PC (virtual connection). Director is the software on a controller that stores the Control4 system configuration and manages the control of each subsystem and device in the Control4 system.
 - Live connection: To make changes to a Control4 system in real time, connect to the Director through either *Local System* (over the home network) or *Remote System* (over the Internet).

Note: Remote Access must be configured locally before using a remote connection to the controller. See "Setting up Remote Access."
 - Virtual connection: Alternatively, to create or edit the system configuration offline and save the project file, connect to Director through *Virtual System*. The saved .c4p project file can be loaded later into a controller through a local connection to ensure that Director has the updated system configuration.
- 5 **Plan and design the system.** To design a system in Composer Pro, you first create a project in the form of a project tree that represents the hierarchy of locations for the devices to be automated in the home-automation system (site > building > floors > rooms > devices) and the devices that reside in each room.
 - **Create a plan.** Creating a plan before you start your project in Composer Pro will help make your system design go much more smoothly.
 - **Design the system using System Design view:** Use the System Design view where you can view the project tree as you build the design.
- 6 **Make and test the connections.** In the Composer Pro project, you must define all of the physical connections of the devices to the system: control (IR and serial) and AV (audio, video). You must also define other connections: room control and network connections. You can use Composer Connections view to complete the connections.
- 7 **Register the system.** Control4 recommends that you register each system you install at customer.control4.com to maintain the system software through software updates and critical system patches.

Important: Only registered systems can use all of the media services available. System registration is one of the essential steps that lets you access the system remotely (remote access) for repairs, updates, and additions.

Composer Pro system requirements

Computer software and hardware

- Microsoft.NET 4 (the Composer install is launched automatically from the Control4 website).
- Microsoft operating systems supported (Windows 10, 8, 7, or Vista). Mac support when used with a Windows virtual machine such as Parallels or VMWare Fusion for Mac.
- 500 MHz or higher processor
- 256 MB RAM
- 90 MB available hard disk space
- Video card and monitor supporting a resolution of 1024x768 or higher
- Keyboard
- Mouse
- 1 to 2 Ethernet (CAT5 or CAT6) cables

Home computer network

- Wireless access point (WAP) or wireless router that supports 802.11 b/g/n (optional)
- TCP/IP-based (Ethernet) home network. This usually includes a network gateway, router or switch.
- 1–2 Ethernet (CAT5 or CAT6) cables
- A broadband Internet connection. During initial setup, a broadband Internet connection is required to update the Control4 system and retrieve the media's cover art. Also, a broadband Internet connection is required to support remote access to the system.

Control4 home automation network

- A Control4 controller (for example, an EA-3).
- Control4 Composer Professional Edition (Composer Pro) software, version 2.10.
- **Note:** A Control4 controller is set by default as a DHCP client. If the home network has a DHCP server in place (for example, a router that provides DHCP services), then the controller automatically receives a valid IP address.

Note: Control4 recommends that you update to the latest software release.

- A wireless access point (WAP) that supports 802.11b/g/n (required to use a Control4 wireless touch screen).
- A valid electronic license to run Composer Pro. Control4 now requires activation using a my.control4.com account with a license to run Composer Pro. Re-activation is required every 30 days. See [Managing Dealer Accounts on My.Control4.com](#) on the Control4 dealer website or Knowledgebase to learn how to add and manage licenses from my.control4.com.

Installing the hardware and software

This section provides guidelines to install the devices and Composer Pro.

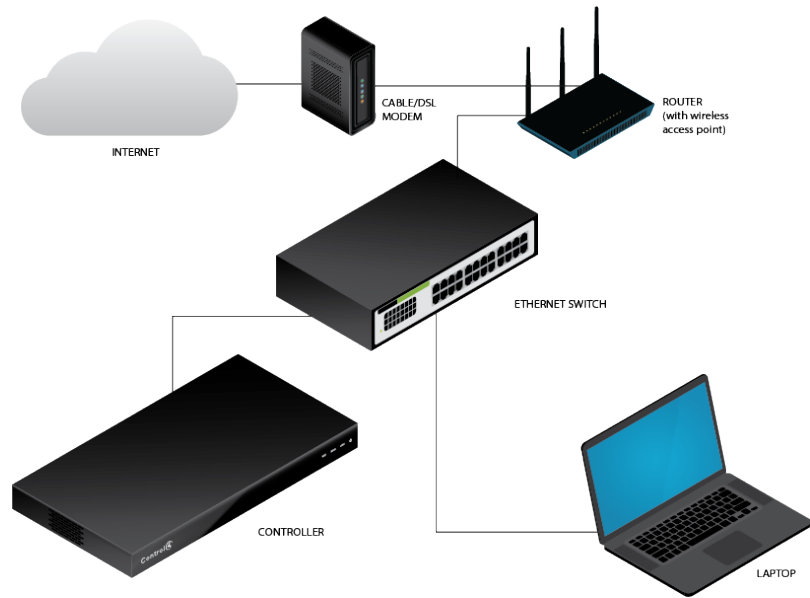
Installing and connecting the hardware

Before you can set up a Control4 home automation system in Composer Pro, all of the devices to be used in the system need to be installed and connected to the home network. Additional devices can be added and identified to the Composer Pro project if you install or replace devices in the future.

Follow these guidelines to get started:

- 1 Create a system specification, and refer to it so you can answer these questions.
 - a What does the home have?
 - Any there any outer buildings, for example a detached garage, that will be automated? All buildings to be automated must be included in the project.
 - How many floors are there in each building? For example, the house has three floors and a basement; the garage has one floor.
 - What rooms are on each floor? For example, the third floor of the house has one Master Bedroom and two other bedrooms. The third floor also has one Master Bath and one Main Bath.
 - b Which Control4 devices are or will be installed in each room (include manufacturers and model numbers)?
 - c Which third-party devices are or will be installed in each room (include manufacturers and model numbers)?
 - d If any of these devices has a choice of power sources, indicate how the device will be powered: AC, DC, or batteries.
 - e If any of these devices has communication options, indicate how each device will communicate with the controller (how the device will be controlled): Ethernet, Power Over Ethernet (POE), WiFi, ZigBee[®] Pro, IR, serial, contact, or relay.
- 2 Install and connect the Control4 devices as described in the installation or setup guide that ships with each device.

Tip: See also "Related documents and resources" in this guide for document locations.
- 3 Install and connect all third-party devices, for example, audio-video devices, door contacts, and security panels, as described in the installation guide that ships with each device.
- 4 Connect the Control4 controller and your PC to the home network using an Ethernet connection. A simple Control4 system and home network are shown below.



- Use the RJ-45 jack labeled 'Ethernet' on the back of the controller to connect it to the home network. If successful, the **amber** LED turns on and the **green** LED blinks. Read the controller's installation guide to learn how the LEDs work.
 - Use either a wireless access point (WAP) or Ethernet cable to connect the PC to the home network.
- 5 Confirm that the Control4 devices are getting network addresses from the gateway, router, or switch. See the [Composer Pro User Guide](#) for details.

Installing Composer Pro software

Follow these steps to install your Control4 Composer Pro software for the first time. If you are upgrading from a version earlier than OS 2.5.3, you must first upgrade to OS 2.5.3 to continue. Please refer to the specific version of this document for further information.

Note: An Internet connection is required to perform this installation.

Follow these general steps for existing systems:

- For dealer licenses, purchase, install and activate the licenses. The computer running Composer Pro must be connected to the Internet, and the installer must have a my.control4.com account with a license to run Composer Pro. Activation is required every 30 days. See [Managing Dealer Accounts on My.Control4.Com](#) on the Dealer Portal.
- Install Composer Pro.
- Register the system and the controller.
- Use Update Manager to upgrade to OS 2.10.

To install the Composer Pro software:

- 1 Obtain the Composer Pro Installation software (available as web download from the [Dealer Portal](#)).
- 2 Start the Composer Pro installation, and then follow the on-screen instructions.

Tip: You can read the Release Notes at this time, too, if you check the box during setup.



- 3 Select to update to the latest version of Composer.

Note: The Composer version or drivers are updated after the creation of the CD, USB drive, or web download. However, Control4 recommends that you always select to update.

Tip: As new features and drivers become available, the Composer Pro software and associated drivers can be updated. When installation is completed, you can update from the **Tools** menu, **Windows Start**, or by running the installation.

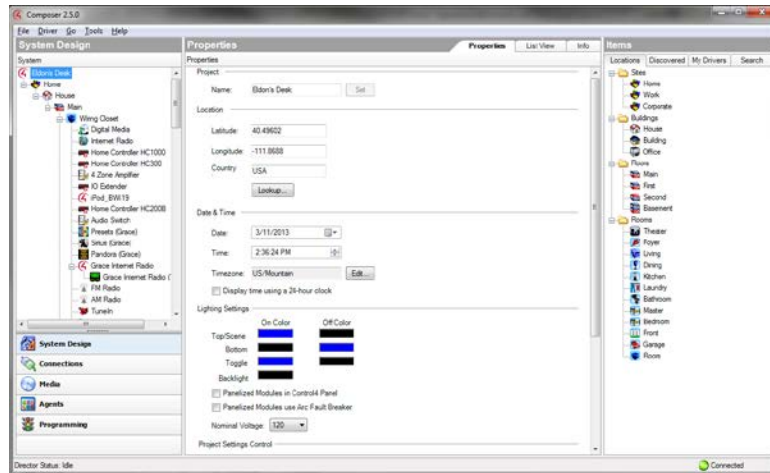
- 4 During the installation process, click **Continue Anyway** to allow the installation to proceed.
- 5 The next screen asks for your dealer account login and password. This assumes that you already have an account on my.control4.com. If you don't have an account, click **Don't have a dealer account yet?** to get one; otherwise, click **Register**.

Exploring Composer Pro features

The Control4 Composer Pro interface (views) and wizards are designed to help you simplify the process of designing the system, identifying and configuring the devices, making the connections, and then customizing the system through programming. How you set up the devices in Composer Pro determines how they function in the system.

First page

When you start Composer Pro and connect to a Director, a similar screen like the following System Design view appears:



The Composer Pro interface contains menus, panes, a project tree, tabs, and objects. These components are explained in this document.

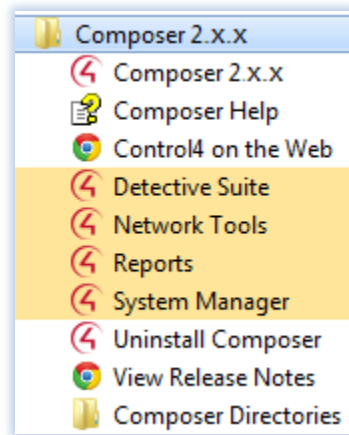
Composer Pro startup options

Start Composer Pro

You can start the Control4 Composer Pro application two ways:

- Double-click the **Composer** icon on your desktop (easiest way).
- Click Start > All Programs > Control4 > Composer 2.x.x > Composer 2.x.x.

Tip: For your convenience, in Composer 2.5 and later the Start menu also displays your projects, logs, and drivers.



When you start Composer Pro, the Composer startup screen displays:



This screen presents the following Director-connection options. Click one of the options to access the Composer Pro project and project tree (System Design view).

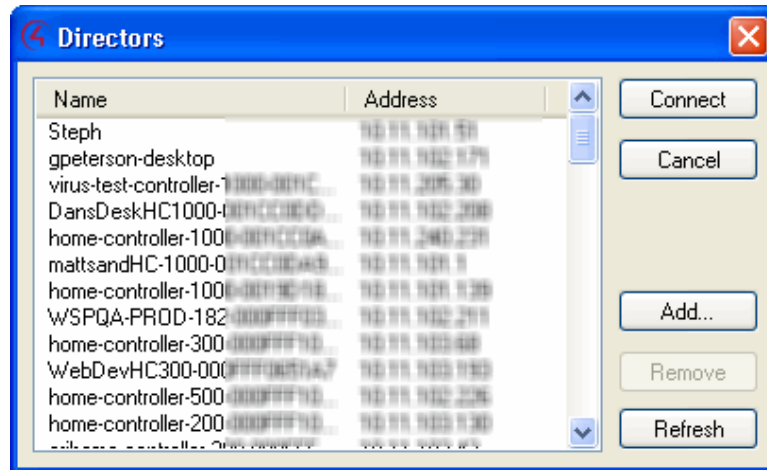
- **Virtual System**—Click this option to work on the project when you are disconnected from the network. If you do not have access to the controller, you can still set up a system using a “Virtual” Director on your PC, and upload your changes later to the controller. Using a virtual connection, you can complete most design tasks, including making software connections and performing some programming tasks. You cannot identify network connections, test device control, or set up media virtually in this mode, however.

Note: Use this option, for example, if you are installing Centralized Lighting products. Also, check **Install the Report Viewer** to add the Centralized Lighting reports. Your electrician will need these reports to install the panels and modules when they become available. See the documentation, plans, and videos on the Control4 website.

- **Local System**—Click this option if you have a direct connection to the home network (inside the firewall). This option gives you all the capabilities of the application: set up and design a project, connect the devices to the network, configure the media, and program the system.

- **Remote System**—Click this option to work from a remote location by establishing an Internet connection to the home network (outside the firewall). You can perform the same tasks as if you were connected using the *Local System* option.
- **System Manager**—Click this option to launch System Manager. System Manager can also be launched from Tools > System Manager, or from the Composer folder in the Windows Start menu.

This Directors dialog appears only when you click **Local System**. In this case, you select the network address associated with the controller, and then click **Connect**.



- **Connect**—Lets you connect to the Director that resides on the controller attached to the local network.
- **Cancel**—Cancels and closes the *Directors* dialog box.
- **Add**—Lets you add the Director's address of the controller to which you are trying to connect.
- **Remove**—Lets you remove the selected Director from the list.
- **Refresh**—Lets you update the Directors list to display recently-added Directors.

Exit Composer Pro

You can exit Composer two ways:

- Startup window (where you start Director):click **Exit Composer**.
- File menu (in the Composer project): select **Exit**.

As you exit, Composer Pro prompts you to back up your project and media information to your local computer. This is not required except when using a *Virtual System* connection, but Control4 highly recommends that you back up your project every time you close Composer Pro.

Composer Pro views

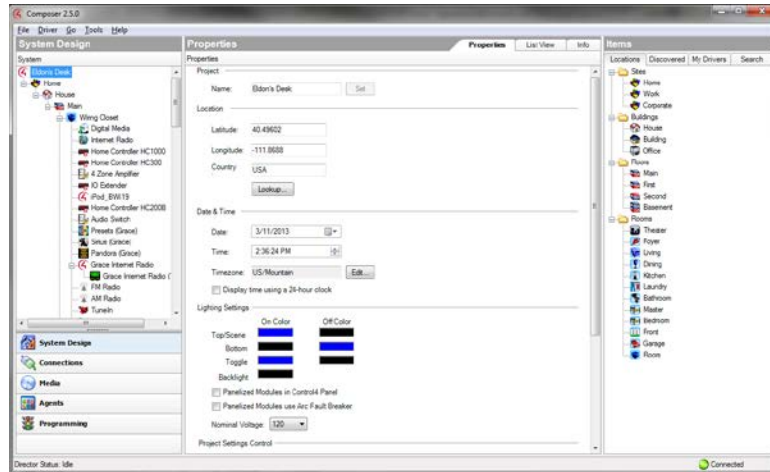
Available views

The Control4 Composer Pro application has five main views (buttons are located in the bottom left pane). When you select a view (see the figures below) the appearance, functionality, and configuration change for that view.

Also note the status bar at the bottom of the screen, which indicates the Director's network IP address and Director status.

Tip: Collapse the views by clicking the dotted bar just above the views so you have more room to view the project tree.

Main menu:



Composer view buttons:



Click one of these buttons for the desired view.

- **System Design**—Build the project tree by adding locations and devices and define device properties.
- **Connections**—Make connections in the project between devices (Room, Control, AV, Network) and identify devices.
- **Media**—Add and scan stored or broadcast media.
- **Agents**—Set up an agent for use in the system and in programming. Agent types: Lighting Scenes, Wakeup, Scheduler, Variables, etc.
- **Programming**—Program events and actions to automate the system. Using predefined events and user-defined agents.

System Design view

Use the Control4 Composer Pro System Design view (the default view when you start Composer Pro) to define the Control4 system project for a customer.

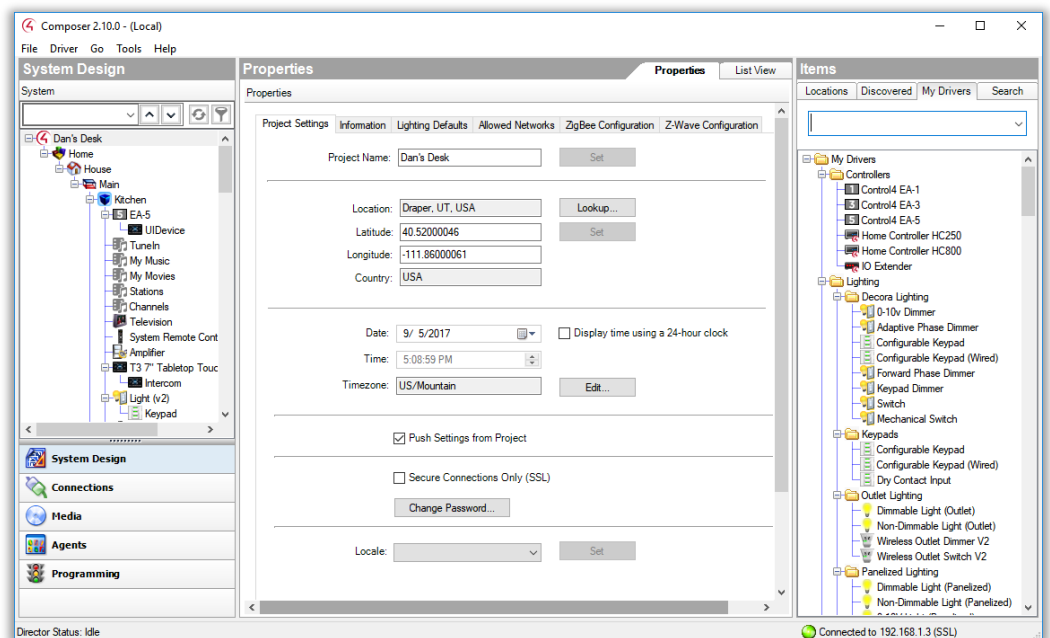
This view lets you set up the project tree by defining

- The location of the devices to set up in the project (building).
- The device you want to include in the project (device objects).
- The location of each device by room (room).

To access the System Design view:

- 1 Start Composer.

Take note of the three large panes in the screen below (System Design, Properties, and Items):



- **System Design (left pane)**—Contains the project tree where you build or update the project configuration with locations and device drivers. Select the room where you want the device driver to go, and then double-click a device driver in the Items pane (right side) to add it to the project tree.
- **Properties (center pane)**—Contains the Properties of the object you select from the project tree when you want to check or modify a device, project, and room. Refer to the sections below to view more information about the *Properties* pane.
 - “Project Properties”
 - “Room Properties”
 - “Device Properties”

- **Items (right pane)**—Contains the items (or objects, device drivers) you use to build your project, such as locations (sites, buildings, floors, rooms) and devices (controller hardware, DVDs, TVs, receivers, lights, contacts, relays, etc.). If a device is not available in the My Drivers tab in this pane, use the **Search** tab to search for that device (see the [Composer Pro User Guide](#) for information about how to search for drivers). If you've created a new driver using the Driver Wizard or DriverWorks, you will find your new driver in the **Search** tab.

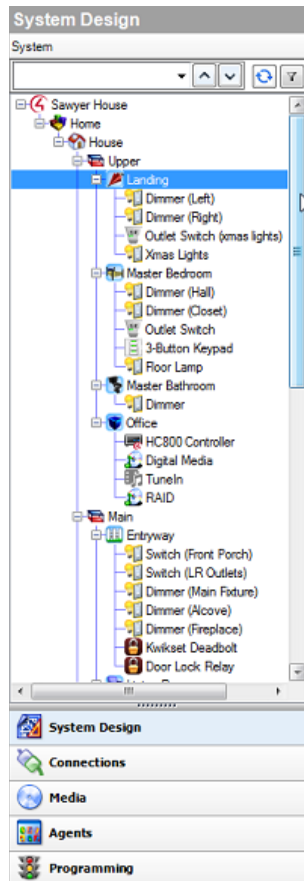
System Design pane

The System Design pane in the System Design view displays the project tree. You build the project by adding floors, rooms, and devices from the Items pane to the tree.

To access the System Design pane:

- 1 Start **Composer**.

Note: The example project tree below shows the project name (Main), site (Home), building (House), floors (Main), rooms (Family, etc.), and the devices already added to the project. If your project is new, the pane will show only the New Project icon and item. Rename your project by right-clicking the name and selecting **Rename**.



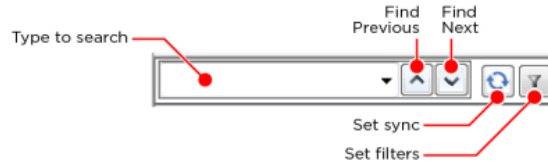
Use the project tree to:

- **Add Locations**—Lets you add locations (sites, buildings, and floors) to the project tree. Double-click to select an item from the **Items** pane > **Locations** tab to move location items to the project tree. If you do not manually add the locations, Composer automatically adds generic locations.

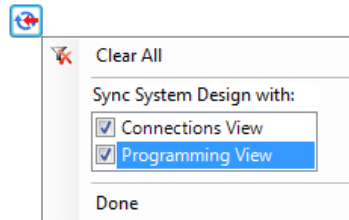
- **Add Devices**—Lets you add devices (lights, VCRs, TVs, controllers, etc.) and their device driver to the project tree below the selected room. To add devices, click the **location** (where the device is installed) in the project tree, and then double-click a **device** in the **Items** pane > **My Drivers** or **Search** tabs (right pane) to move device to the project tree.
- For more information about how to create a project, see “Introduction.”

Project tree search, sync, and filter

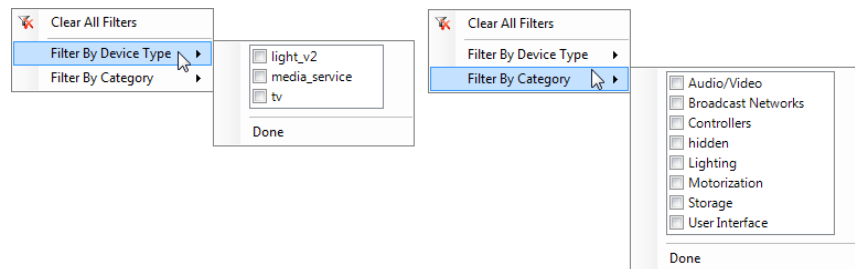
To make it easier to find and manage devices in large projects, the project tree has search, sync, and filter controls.



- **Search**—Type the device name to search for here. Click the **Find Next** button to jump to the next device of that name. Click the down arrow on the right side of the search box to select from previously used search terms.
- **Sync**—Use Sync to keep the same project device selected while switching between System Design, Connections, and Programming views. Click the **Sync** button and select the checkbox for the views you want to keep synchronized with the System Design view, then click **Done**. To clear them, click the checkboxes or click **Clear All**.



- **Filters**—Use filters to hide or show only certain types of items in the project tree. Click the **Filters** button, then set filters by **Device Type** or **Category**. The *Device Type* list contains only device types already included in your project. Setting a filter under *Device Type* will clear any filters already set in *Category*, and vice versa. To clear all filters, click **Clear All Filters**.



Device Control window

The Device Control window in System Design lets you test and control a physical device (after identifying the device and making its connection) in Composer Pro to make sure it works in the system.

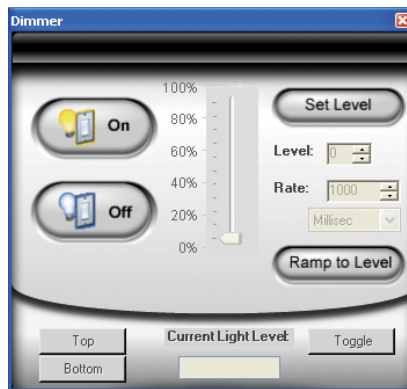
Note: You must define the connections before you test or control the devices. See “Testing the device connections” for information about how to make the connections.

Example: To use the Device Control for a dimmer, you click a button in the Device Control window to turn the dimmer on or off and change the light level. If the physical light changes also, you know the dimmer driver is added and the basic connections are made correctly.

To access the Device Control window:

- 1 Start **Composer**. The System Design view appears.

Double-click the **device** in the project tree to access the Device Control window (see below) for that device.

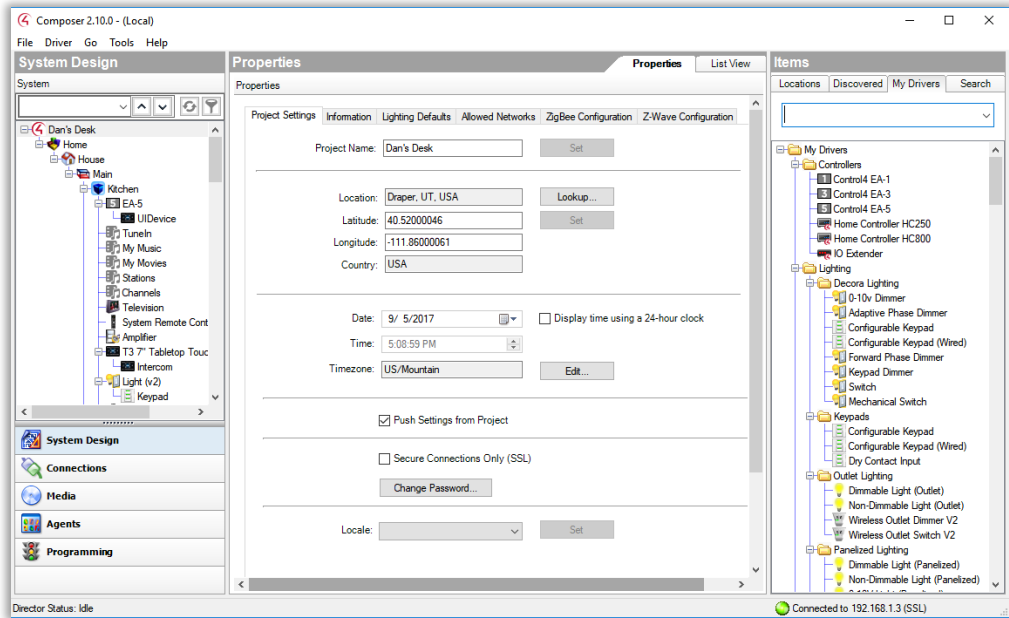


This window lets you change the configuration parameters (temporarily) and control a device. Later, you can set the parameters permanently in the Properties pane or Programming view.

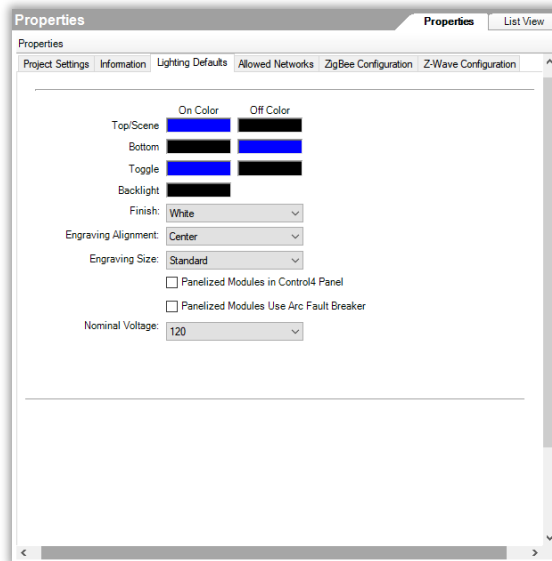
Example: You can adjust and test the ramp rate of a dimmer to determine the desired ramp rate to set during programming.

Properties pane

In the System Design view, click the project name (“Main,” in this example) in the project tree to view the *Properties* pane (center pane).



The project *Properties* appear when you first start Composer Pro, or any time you select the project name (or root node) in the project tree. Different properties appear depending on the item you select.



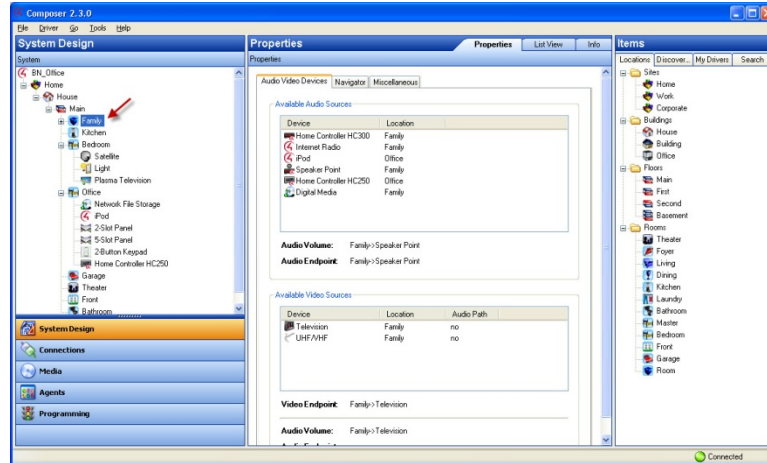
This option lets you enter project-specific information; for example, the project name, location, and ZIP Code. Composer Pro automatically enters the latitude/longitude and date/time information after you provide the location and ZIP Code.

Properties Pane	
Project Settings tab	
Category	Boxes or Buttons
Project Name —Lets you enter/edit the name of the project.	N/A
Location —Lets you look up a location's latitude and longitude based on city, state, country, etc.	<p>Latitude/Longitude—Lets the system calculate from the entered ZIP Code, the local latitude and longitude coordinate information. Knowing location information lets the system calculate local sunrise and sunset times. This is useful for programming lights to turn on at dusk and off at dawn. Using a ZIP Code to find the coordinates only provides a close estimate of latitude and longitude. If you want to enter exact coordinates, the fields can be edited. Also used for outside temperature on the touch screens.</p> <p>Country—Lets you select the country in which the project is located.</p> <p>Lookup Button—Lets you enter/edit the ZIP Code which identifies to the system the local cable, satellite, and broadcast channel programming. It also automatically provides latitude and longitude coordinate location.</p>
Date and Time —Lets you set a date, time, and time zone for the Control4 system. By changing the time here and refreshing Navigators (File > Refresh Navigators), you reset the time on the entire system. However, Control4 systems with access to the Internet automatically synchronize the system clock using Network Time Protocol (NTP).	<p>Timezone—Lets you set the appropriate time zone by clicking Edit. Changing the time zone causes the controller to reboot.</p> <p>Display time using a 24-hour clock—If checked, lets you use the 24-hour clock (0 to 2400 hours) rather than 12 am to 12 pm.</p>
Project Settings Control — Lets you set a device in Composer that does not allow the setting to be overridden at the device.	Push Settings From Project —Check the box for devices to receive settings from the Composer project only. New settings in the Composer project override any settings at the device.
System Security —If set, all Navigators (Release 2.0 or later) must connect through a secure connection.	Properties Pane: Information tab
Localization —Lets you set the locale and character set for countries outside the United States.	Locale —Use the down arrow to change the locale.
Scale —Lets you select the temperature type.	Fahrenheit or Celsius.
Information tab	
Category	Boxes or Buttons
System Owner	Name, Address, Phone, and Email —Enter homeowner information into these fields.
Dealer Information	Name, Address, Phone, Email, Primary Contact, Lead Installer, Original Install Date, and Date of Last Update —Enter dealer information and project update dates into these fields.
Project Notes	Any notes the dealer wants to add can be stored here.

Lighting Defaults tab	
Category	Boxes or Buttons
<p>Lighting Defaults—Lets you set default LED colors for switches, dimmers, and keypads as well as certain default parameters for Centralized Lighting. You can still modify these settings for individual devices in the device properties. Also lets you set basic parameters for Centralized Lighting.</p>	<p>On Color/Off Color—Set the default On and Off color for each LED in the project.</p> <p>Centralized Modules in Control4 Panel—Select this box to indicate that the Centralized Lighting modules will be installed in Control4 2-Slot or 5-Slot Panels. If the modules will be installed in off-the-shelf DIN Rail panels, leave this box unchecked.</p> <p>Centralized Modules Use Arc Fault Breaker—Select this box if the majority of Centralized Lighting modules will be connected to an arc-fault breaker (AFCI).</p> <p>Nominal Voltage—Select the default voltage that will be used by the Centralized lighting modules.</p>
Lighting Defaults tab	
Category	Boxes or Buttons
<p>Subnets</p>	<p>By default, it is not possible to identify a device that resides on a different network (e.g., subnet) because Director actively excludes identification broadcasts received from devices on a different network.</p> <p>You can expand the list of allowed networks by adding one, or more, CIDR network specifications to the following list.</p> <p>For example: 192.168.2.0/24</p> <p>For more examples see: (<https://en.wikipedia.org/wiki/Classless_Inter-Domain_Routing>)</p>
ZigBee Configuration tab	
Category	Boxes or Buttons
<p>Edit Zigbee Configuration</p>	<p>Click on this link to define, edit, and move ZigBee mesh configurations.</p>
<p>Refresh</p>	<p>Click on this link to refresh the ZigBee status view below.</p>
<p>ZigBee Network Status</p>	<p>Use this view to see the status of the ZigBee mesh(es) in your project.</p> <p>Name—Name of the device configured in the ZigBee mesh.</p> <p>Controller Status—The colored icon shows an at-a-glance status of the ZigBee network. Green for online, Yellow for offline, Red for error.</p> <p>ZigBee Server—The controller defined as the ZigBee Server will say “Enabled”.</p> <p>ZigBee Status—Shows the status of the ZigBee Server. “Running” means the ZigBee Server is configured and running.</p> <p>Channel—The current channel of the ZigBee mesh.</p> <p>ZAP Status—A controller configured as a ZAP will show as “Coordinator” or “Enabled”.</p>
Z-Wave Configuration tab	
Category	Boxes or Buttons
<p>Advanced</p>	<p>Use the Learn, Network Update, Reset Defaults, and Send Node Info buttons to manage your Z-Wave network. See the Z-Wave Setup Guide for more information (ctrl4.co/z-wave-sg)</p>

Room Properties

The room *Properties* (System Design > Room > Properties) appear when you select a room in the System Design project tree.



The room *Properties* pane lets you view room-specific device and media information (for example, the iPod located in the Office is an available audio source in the Family room), and helps you troubleshoot any incorrect room connections.

The **Audio/Video Devices** tablets you view the devices configured for each end point device and the devices that are available in the room.

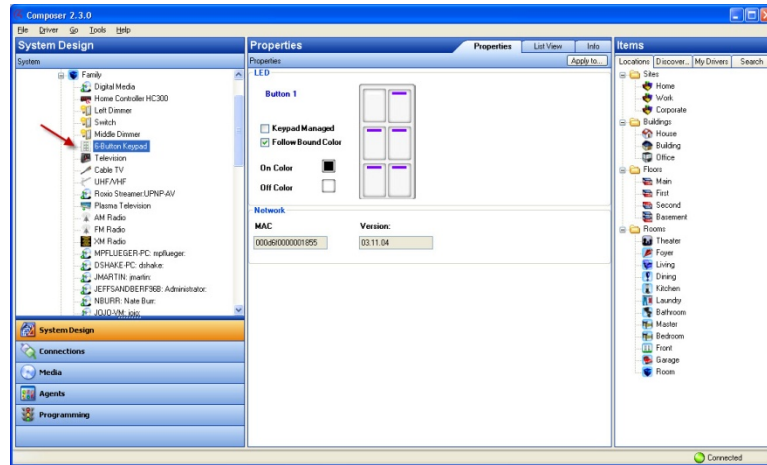
Example: *If you can't play movies from a Disc Changer in a particular room, you can view the room's Properties to see if the disc changer shows up in the List view. If it does not, you are probably missing AV bindings in the path to the device. Detailed information about connections is available in the [Composer Pro User Guide](#), or see "Connections view."*

Properties Pane—Room Properties	
Category	Box or Button
<p>Audio Video Devices tab—Provides information that lets you view all audio and video devices and control connections in a selected room.</p>	<p>Audio Endpoint—The device that is configured to play audio in the room. Tip: Which device needs to turn on and off to listen to any source of audio in the room?</p> <p>Audio Volume—The device that is configured to control the audio volume in the room. Tip: Which device do you need to send volume commands to in order to control the audio volume in the room?</p> <p>Video Endpoint—The device in the room that is configured to display the video in the room. Tip: Which video display device is in the room, or where does the video end up?</p>
<p>Navigator tab—Lets you hide and re-order device visibility for all Navigators (in Watch, Listen, etc.).</p>	<p>Modify—Lets you move the order of devices up or down, and hide or show them. Select the device in the <i>Menu</i> list.</p>

Properties Pane—Room Properties	
Category	Box or Button
<p>Miscellaneous view—Lets you set the default audio and video volume for the room, for example, what the room will revert to after a power cycle. This is also where you set the IR Mask for the room.</p>	<p>Enable Default Volume—Select and use the up or down arrows to change the audio and video volume.</p> <p>Mute When Paused—Select this option to send a mute command when media is the room is paused.</p> <p>Multi-Room Shared IR Settings—Use the down arrow to select the IR.</p>

Device Properties

The device *Properties* (System Design > device > Properties) are visible when you select a device in the project tree. This option lets you modify the available (if any) user options for the selected device.



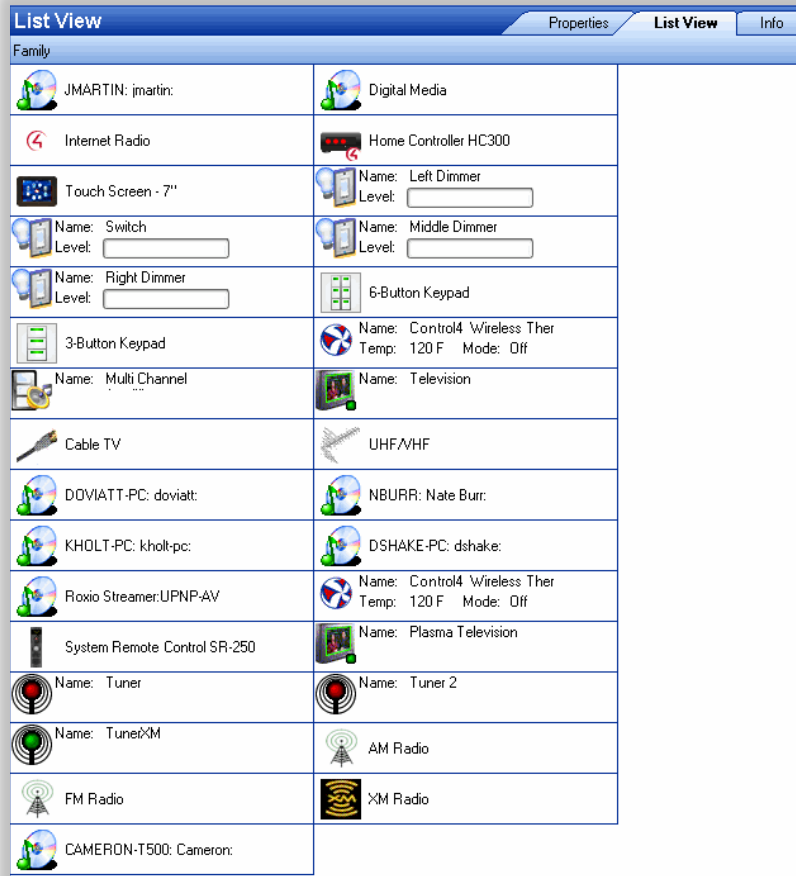
Properties Pane: Device Properties	
Category	
<p>Properties—Lets you modify options (if available) that are common to all devices of that type.</p>	
<p>Advanced Properties—Lets you modify advanced options (if available) on some devices.</p>	

List View pane

Use the Control4 Composer Pro List View pane in System Design to view all of the devices in a room.

When you select a room or any device in a room in the project tree, and then click **List View**, all of the devices installed in that room display; for example, notice all of the devices installed in the Family room (shown below).

Note: The List View shows all the devices in a given area and the current state of contact inputs or other devices. When selecting the site, building, floor, or room, all of the devices associated in that area are visible. If a single device is selected in the project tree, List View shows all devices that are in the same room.



To access the List View pane:

- 1 Start Composer.
- 2 In the project tree, click any object.
- 3 In the *Properties* pane, click the **List View** tab.
- 4 You can double-click a device in the List View pane to display its Device Control window.

Items pane

The Control4 Composer Pro Items pane lets you build the project tree either by:

- Dragging and dropping items from the Items pane to the project tree, or by
- Double-clicking the item in the Items pane (which adds it to the project tree).

Note: In OS 2.3.0 or later, specific devices can be added and identified in the project tree automatically using the Discovered tab (via SDDP). See the figure below and the [Composer Pro User Guide](#) for details.

To access the Items pane:

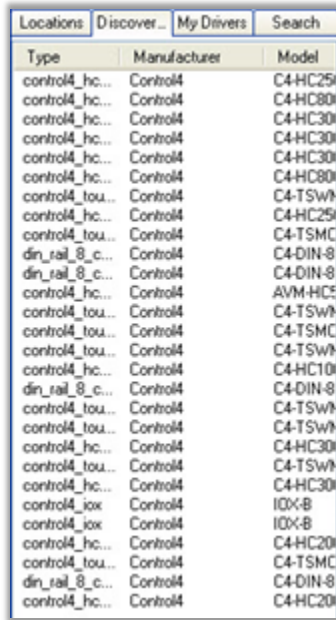
- 1 Start Composer Pro. The System Design view appears by default.
- 2 View the Items pane on the right side.
- 3 Click the **Locations** tab.



The *Locations* tab displays the list of available objects by their physical location in the home (site, building, floor, or room) that you can add to a project. Use the items in the *Locations* tab to organize the project tree by area.

Example: The *Sites* object shows which sites (*Home, Work, Corporate, etc.*) you can add to your project tree as you begin to build your design.

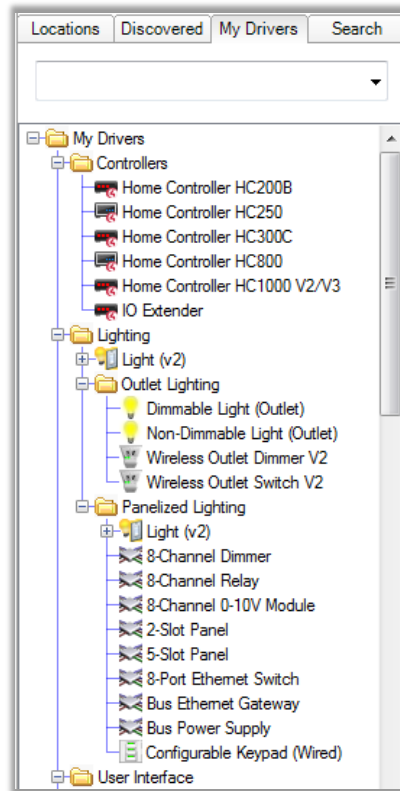
- 4 Click the **Discovered** tab.



Locations	Discover...	My Drivers	Search
Type	Manufacturer	Model	
control4_hc...	Control4	C4-HC25I	
control4_hc...	Control4	C4-HC80I	
control4_hc...	Control4	C4-HC30I	
control4_hc...	Control4	C4-HC30I	
control4_hc...	Control4	C4-HC80I	
control4_tou...	Control4	C4-TSWA	
control4_hc...	Control4	C4-HC25I	
control4_tou...	Control4	C4-TSMC	
din_rail_8_c...	Control4	C4-DIN-8	
din_rail_8_c...	Control4	C4-DIN-8	
control4_hc...	Control4	AVM-HC5	
control4_tou...	Control4	C4-TSWA	
control4_tou...	Control4	C4-TSMC	
control4_tou...	Control4	C4-TSWA	
control4_hc...	Control4	C4-HC10I	
din_rail_8_c...	Control4	C4-DIN-8	
control4_tou...	Control4	C4-TSWA	
control4_tou...	Control4	C4-TSWA	
control4_hc...	Control4	C4-HC30I	
control4_tou...	Control4	C4-TSWA	
control4_hc...	Control4	C4-HC30I	
control4_jox	Control4	IDX-B	
control4_jox	Control4	IDX-B	
control4_hc...	Control4	C4-HC20I	
control4_tou...	Control4	C4-TSMC	
din_rail_8_c...	Control4	C4-DIN-8	
control4_hc...	Control4	C4-HC20I	

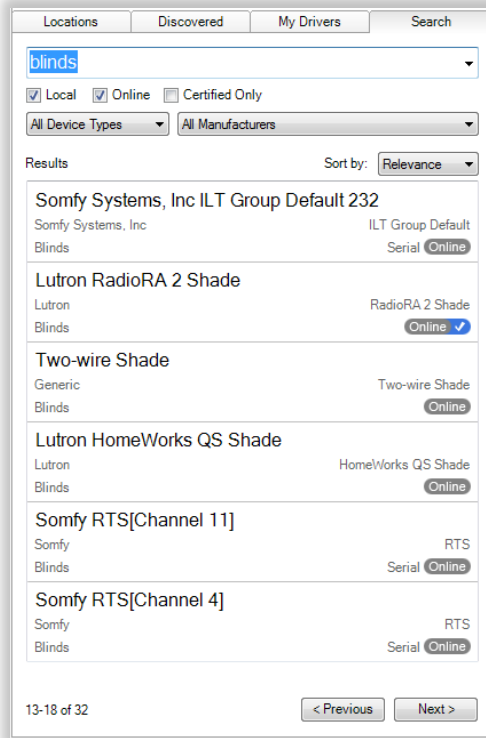
The *Discovered* tab (supported for devices added in OS 2.3 and later) lists the devices that can be automatically discovered by the system. You simply click where in the project (room) you want the device to go (left pane), and then double-click the device in the list; it will be added and identified automatically. See “Configuring devices” in the [Composer Pro User Guide](#) for details. This feature is ideal for smaller systems.

- 5 Click the **My Drivers** tab.



The *My Drivers* tab displays a list of device drivers you can add to the project tree. This is a list of common Control4 and third-party device drivers. If you can't find the driver you want, go to Step 6.

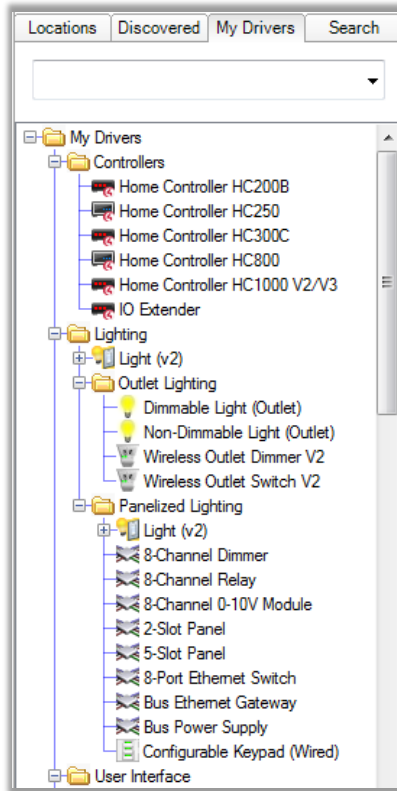
- To locate a driver that is not in the common list, click the **Search** tab. If you can't find the driver you want here, you may need to create your own driver. See "Search tab" for details about how to use the *Search* function.



The *Search* tab lets you search for drivers that don't appear in the *My Drivers* tab.

My Drivers tab

Use the *My Drivers* tab to add Control4 and popular third-party device drivers to the project tree.



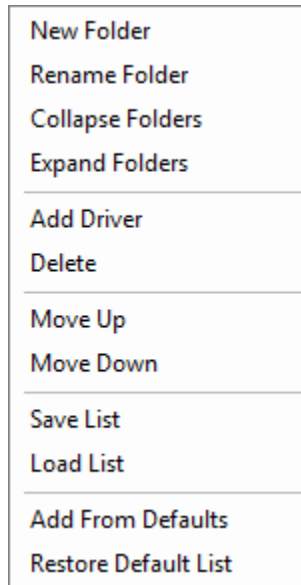
To access the *My Drivers* tab:

- 1 Start Composer Pro and connect to a Director.
- 2 In the project tree, click the room to add the driver to.
- 3 In the Items pane (right side), click the **My Drivers** tab. A list of devices appears.
- 4 Click to expand a category, and type in the search box to search for a device name.
- 5 Double-click a device driver in the list to add it to the project tree. For information about configuring devices after adding them to the project tree, see "Configuring devices" in the [Composer Pro User Guide](#).
- 6 The *My Drivers* list is only a set of common devices. If you do not see the device driver you need, you can find and add device drivers to the *My Drivers* list using the *Search* tab.

If you select a generic device, a dialog box with a list of devices appears. Select a specific model to add it to the project tree. If you can't find the device driver you need, you can either modify an existing one or create a new one. See the [Composer Pro User Guide](#) for details.

My Drivers options

If you right-click any device driver in the *My Drivers* list, the following options display:



- **New Folder**—Create a new folder in the *My Drivers* list.
- **Rename Folder**—Rename an existing folder.
- **Collapse Folders**—Close all folders.
- **Expand Folders**—Open all folders to expose the items.
- **Add Driver**—Add a driver to the *My Drivers* list..
- **Delete**—Remove an existing driver from the *My Drivers* list.
- **Move Up**—Move the item up the list.
- **Move Down**—Move the item down the list.
- **Save List**—Save the *My Drivers* list.
- **Load List**—Load a saved list.
- **Add from Defaults**—Add a driver from the default list.
- **Restore Default List**—Restore the device list to the default contents.

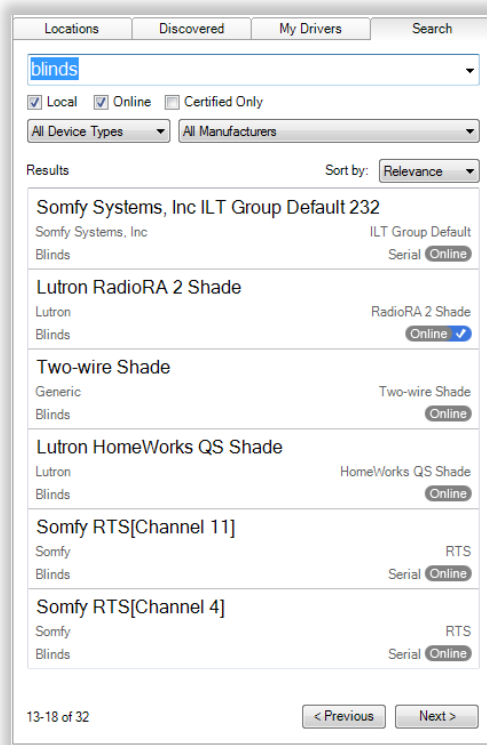
Search tab

Use the *Search* tab to search for and add device drivers to the project tree that do not appear in the *My Drivers* list.

To find a device driver using *Search*:

- 1 Start Composer Pro and connect to a Director.
- 2 In the project tree, click the room to add the driver to.

- 3 In the *Items* pane, click the **Search** tab.



To find a device driver:

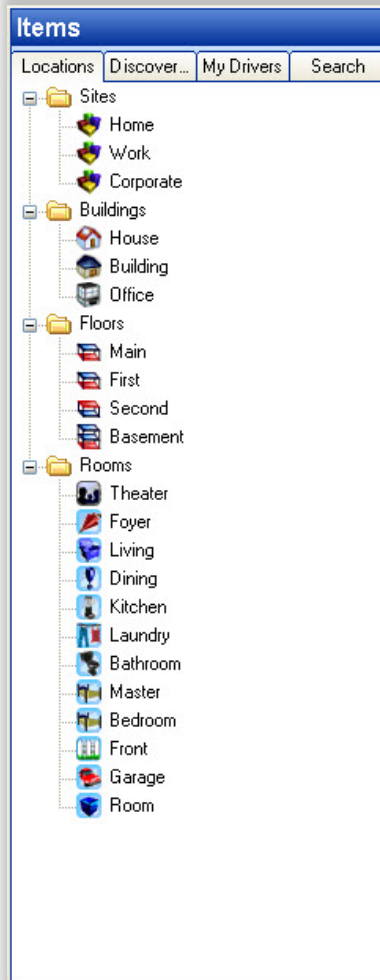
- 1 From the project tree, select the room where the device resides.
- 2 In the *Search* tab, type the text to search for in the search box. As you type, matching options are displayed.
- 3 To narrow down the search, select the device type and the manufacturer from the respective filters.
- 4 Drag the driver to the project tree, or double-click the device driver to add it the project tree.
 - **[search text field]**—Type the text to search for here. You can use the drop-down menu to select terms that were previously typed.
 - **Local (default)**—The Local checkbox lets you view device drivers stored on your local computer.
 - **Online**—The Online checkbox lets you view and download drivers from the online database.
 - **Certified Only**—This checkbox specifies that only Control4-Certified drivers will appear in the search results.
 - **Device Types**—Lets you select the device type (proxy), for example, AV Switch (includes audio switches), Blinds, CD, Disc Changer (includes DVD and CD Changers), DVD, Light, Receiver, Satellite (includes DVRs), Cable TV, Television, Thermostat, Tuner, VCR and more.
 - **Manufacturers**—Lets you select the manufacturer.
 - **Sort by**—Lets you select the order that search results are displayed.
 - **Results**—Detailed search results appear, including the manufacturer, model, and driver location.

Locations tab

Use the *Locations* tab to add the list of available locations (site, building, floor, room, etc.) to a project.

To access the *Locations* tab:

- 1 In the project tree, click the site, building, or floor where you want to add the location.
- 2 In the *Items* pane (right side), click the **Locations** tab.
- 3 Double-click a location in the *Locations* tab to add it to the project tree.
- 4 Click **Sites**, **Buildings**, **Floors** or **Rooms** to expand the category.



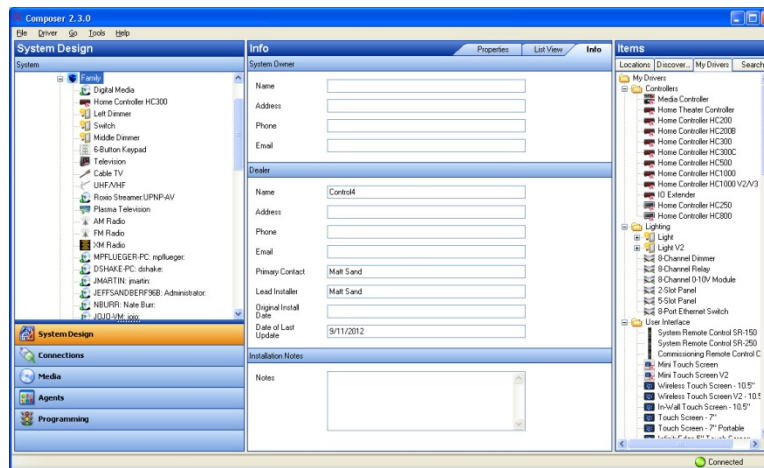
- **Sites**—Define the project site type. Defines the main location, and identifies the type of system you are designing, for example, a residence, commercial, or corporate site.
- **Buildings**—Place the buildings on the site (House, Building, Office, etc.). Defines the buildings located on the site. For example, a residence might have a separate Garage, Workshop, Shed, or Pool house. A Campus might have a building for each college.

- **Floors**—Add the floors in each building (Main, Second, etc.). Lets you describe the various floors in each building, for example, Main and Basement or First, Second, and Third floors.
- **Rooms**—Add the rooms on each floor (Bedroom, Bathroom, etc.). Lets you describe the various rooms on a floor, for example, Kitchen, Living Room, Great Room, Master Bedroom, Laundry Room, etc.

Info pane

Use the *Info* pane in System Design to view information about the system owner and Control4 dealer.

Tip: Some of the information you enter here is added to the touch screens, Control4 apps, or on-screen navigators (More > Settings > About) in Release 2.0 or later. For example, the longitude and latitude display the outside temperature on a touch screen, Control4 app, or on-screen Navigator.



To access the *Info* pane:

- 1 In *System Design*, click the **Info** tab.
- 2 View, add or change existing information about the system owner or dealer in each box.
- 3 Check and change the data periodically as needed.

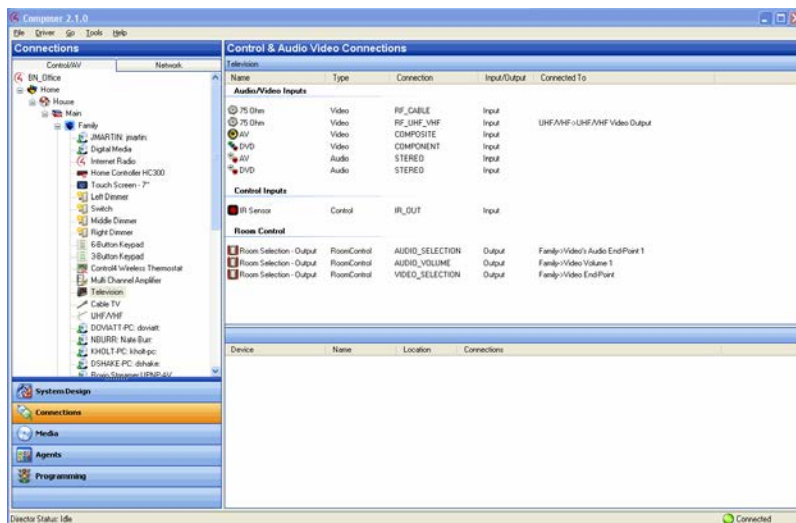
The *Info* pane lists:

- **System Owner information**
 - Name
 - Address
 - Phone
 - Email address

- **Dealer information**
 - Name
 - Address
 - Phone
 - Email address
 - Primary Contact
 - Lead Installer
 - Original Install Date
 - Date of Last Update
- Installation **Notes**—Use the *Notes* box to add any relevant details about a particular installation.

Connections view

Use the *Connections* view to define to the Control4 system the physical connections and addresses of each device added to the Control4 system. The connections are added automatically when you add the device, but you need to connect each device to other devices in the system. See the [Composer Pro User Guide](#) for details.



To access the *Connections* view:

- 1 Click **Connections** at the bottom of the left pane (see orange highlight).
The *Connections* pane (left side) has two tabs:
 - *Control/AV*—Lets you define control and audio or video connections.
 - *Network*—Lets you identify devices with their IP address or network name.
 The *Control & Audio Video Connections* pane has three categories and several columns:
 - **Categories:**
 - **Audio/Video Inputs**
 - **Control Inputs**
 - **Room Control**
 - **Columns:**
 - **Name**—The name of the connection
 - **Type**—The connection category, for example, Audio or RoomControl

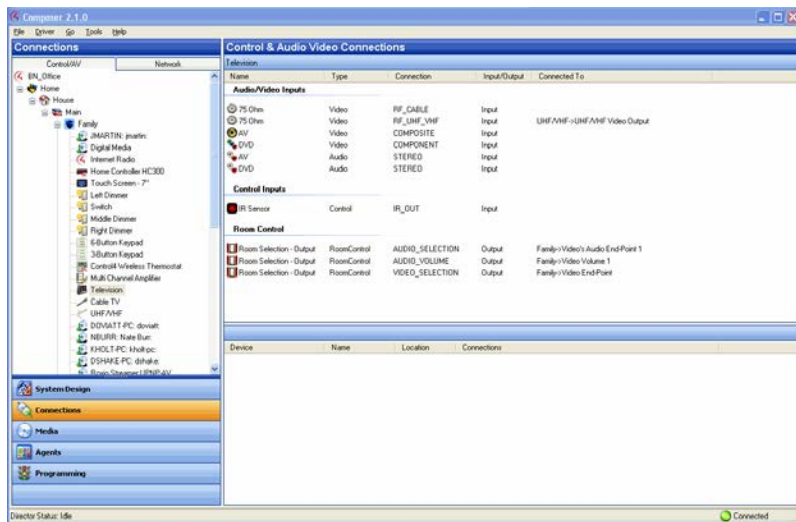
- **Connection**—The connection type, for example, HDMI or Component.
- **Input/Output**—Shows whether the connection is for input or output.
- **Connected To**—Shows which device this connection is connected to.

The bottom pane has several columns:

- **Device**—The name of the device.
- **Name**—The name of the connection on the device.
- **Location**—The room where the device is located in the project tree.
- **Connections**—Lists the devices connected to this connection.

Control/AV tab

Use the *Control/AV* tab in the *Connections* view to define the physical connections between the Control4 controller and other devices you add to the Control4 system, including AV signals, IRs, relays, contacts, and/or serial connections.



To access the *Control/AV* tab:

- 1 Click **Connections** at the bottom of the left pane.
- 2 In the *Connections* pane, click the **Control/AV** tab.

The *Control/AV* tab contains two panes:

- The left pane displays the project tree.
 - The right pane lists the actual device connections.
- 3 If you click an object in the project tree of the *Control/AV* tab, you are selecting either a room or a device to display the following types of connections in the *Control & Audio Video Connections* pane:
 - **Room Connections**—Lets you define the connections specific to the room which can include, for example, a thermostat that you can control from a touch screen, Control4 app, or on-screen Navigator. Room connections help you customize and design the devices to perform specific functions in the room.

If you select a room (for example, **Family**) on the *Control/AV* tab, the available room connections appear in the pane under *Family* (the bar just below *Control & Audio Video Connections*). The Video, Audio, or Video's Audio End-Points and the Audio or Video Volume are all defined for the room.

- **Control & Audio Video Connections**—If you select a device in the *Connections > Control/AV* tab, the available *Control & Audio Video Connections* pane displays the following panes:
 - **Available inputs and outputs**—The top pane identifies the available inputs and outputs of a device to make its connections.
 - **Connected items**—When you select an item in the top pane, the bottom pane displays the available connections for that input or output.
- 4 To make the actual connection, select the item in the top pane, and drag it to the associated item in the bottom pane.

Note: If you select a device on the project tree and nothing appears, the device doesn't have any control or AV connections; maybe it uses the network connection to communicate to the controller. In these cases, use the *Network* tab to identify this device's network address to the system. See "Network Tab" below.

The available input and output categories for the selected device display in this order:

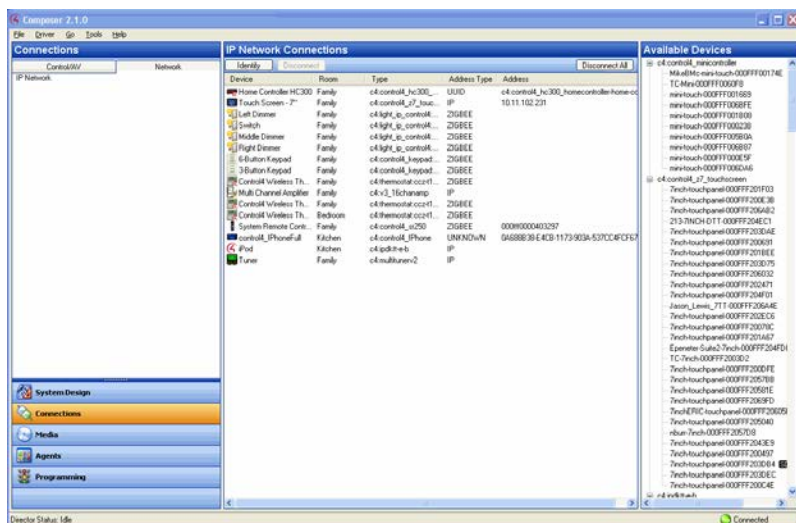
- **Audio/Video Inputs**—Shows the available audio and video inputs. In this category, the video connections are listed first, and then the audio connections.
- **Audio/Video Outputs**—Shows the available audio and video outputs. In this category, the video connections are listed first, and then the audio connections.
- **Control Inputs**—Shows the available input control connection.
- **Control Outputs**—Shows the available output control connection.
- **Room Control**—Lists the available room control connections.

If the connections you need do not appear, you can edit the driver to create the needed connections. From the *Driver* menu (in the Composer menu bar), select **Edit Existing Driver** to open the Driver Wizard.

Note: Editing drivers is an advanced task and is out of the scope of this document. Details about the Driver Wizard are discussed in the [Composer Pro User Guide](#) or you can use the Driver Editor. Talk to your Control4 Sales Representative to find out how to order this tool.

Network tab

Use the *Network* tab in the *Connections* view to display a list of all devices in the system that have a network connection and use a network address. Click the **Identify** button (for releases older than OS 2.2 or to re-identify a device) to establish the network connection for any device that communicates to the controller using TCP/IP, WiFi, ZigBee, or any other device that uses a network address.



To access the *Network* tab:

- 1 Click **Connections** at the bottom of the System Design pane.
- 2 In the Connections pane, click the **Network** tab. The *Network* tab displays the network type, for example, IP Network, along with the
 - *IP Network Connections* pane, and the
 - *Available Devices* pane.

The *IP Network Connections* pane lists all devices for the selected network type. After identifying the network connection, the device's address appears in the *IP Network Connections* pane under *Address*.

- Buttons
 - **Identify**—Select a device from the IP Network Connections pane and click **Identify** to have Composer identify the device. This causes Director to listen on the network for the device to broadcast its network address, ZigBee address, or network name. Once Director is waiting for the device to identify itself, you must cause the device to broadcast its address on the network. The *Identify* window gives a description on how to make a device identify itself.
 - **Disconnect**—Select the device, and then click **Disconnect** to remove the connection.
 - **Disconnect All**—Click **Disconnect All** to remove all of the connections.
- Columns
 - **Device**—The name of the device.
 - **Room**—The room in which the device resides.
 - **Type**—The device type recognized by the system.
 - **Address Type**—The type of address used, for example, ZigBee.
 - **Address**—The device address.

After identifying the network connection, the device address appears. If a device does not have an address next to it, it needs to be identified to the system.

The Available Devices pane shows the list of devices that the network has discovered. Each device shows up under the service type. It also displays the total number of devices found and the number of connected or unconnected devices of each type.

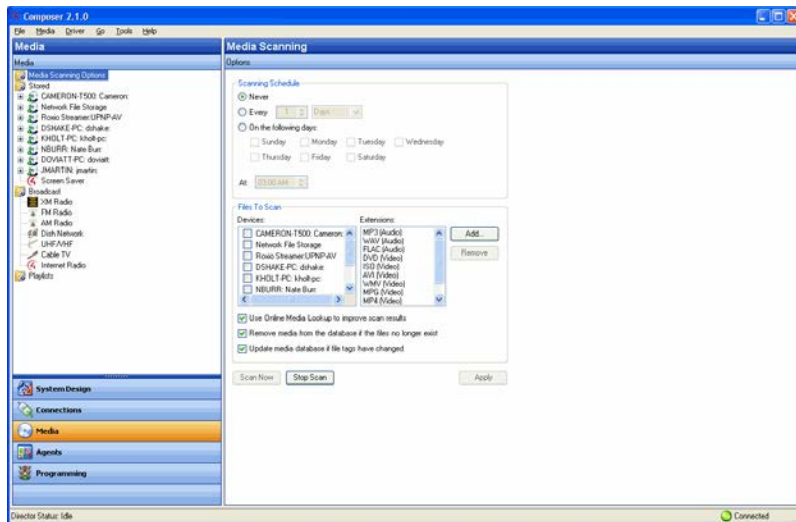
Tip: Throughout the Control4 system, devices are identified using various types of addresses, for example, ZigBee, ZigBee Pro, IP, UDP, etc. These types of addresses are known as “network addresses.”

Media view

Use the *Media* view to select the stored or broadcast media on touch screens, Control4 apps, and on-screen Navigators. The Media view lets you add media selections to the Control4 system: stored music and media collections from a network-attached storage device (NAS) or other devices, for example, a Dock for iPod, DVD player or disc changer, broadcasts, channels, and stations.

To view and select the media from the Navigators, you first need to add and scan the media to the Control4 controller (for example, an EA-3 controller). With MP3, WMA, FLAC, or AAC files that you add and scan, you can create playlists saved to the controller (if it has a hard drive) in the media database. See the [Composer Pro User Guide](#) for details.

Other Media Managers: You can use other media managers, for example, iTunes, Windows Media Player, and Media Monkey to stream MP3s, WMAs, or MP4s. And your customers can use Composer Media Edition (Composer ME) or Composer Home Edition (Composer HE) to add media files to Control4.



To access the Media view:

- 1 Click **Media** at the bottom of the System Design pane.
- 2 In the *Media* pane, view the media devices. In the *Media* view, the left-side selections change the right-side views.

The system can access and use several types of media and supports various Media Scanning options:

- **Stored media** (e.g., DVDs) includes the possible media types that store media:
 - **Controller**—Lets you store MP3s, WMAs, or MP4s in the digital audio database of the controller (if you have a controller with a hard drive).
 - **CD**—Lets you store CD cover art, albums, artist ratings, and genre (Rock, Jazz, Country, etc.).
 - **DVD Player or Disc Changer**—Lets you store DVD and CD (when DVD supports CD) selections by viewing cover art, title, info, results, media, and disc list.
 - **MP3s on Digital Audio Player**—Lets you store MP3 — HDD music cover art, album, artist rating, and genre (Rock, Jazz, Country, etc.).
 - **External or Network File Storage Devices**—Lets you store MP3, WMA, MP4, FLAC, or AAC formats on an external hard drive, USB drive, or server.
 - **Screen Saver**—Lets you store the custom images to be used as screen savers on the Navigators.
- **Internet radio**—Lets you assign a particular Internet radio station with cover art.
- **Broadcast media** (for example, Cable/Satellite) includes the possible media types:
 - **Direct TV**—Lets you view DIRECTV channel options, including station ID, genre, rating and music channel.
 - **Dish Network**—Lets you view Dish Network channel options, including station ID, genre, rating, and music channel.
 - **Cable TV**—Lets you view Cable channel options, including station ID, genre, rating, and music channel.
 - **UHF/VHF**—Lets you view the UHF channel options, including station ID, genre, rating, and HDTV.
 - **AM/FM/XM**—Lets you scan AM, FM, and XM radio stations.
- **Playlists** includes the possible media types:
 - **MP3 on Digital Audio Player**—Lets you play and view MP3 or MP4 — HDD music cover art, album, artist rating, and genre (Rock, Jazz, Country, etc.).

- **CD**—Lets you play and view CD cover art, albums, the artist ratings, and genre (Rock, Jazz, Country, etc.).
- **Controller**—Lets you play MP3, WMA, MP4, FLAC, or AAC formats from the controller (if supported).
- **External or Network File Storage Devices**—Lets you play MP3, WMA, MP4, FLAC, or AAC formats from an external hard drive, USB drive, or server.
- **DVD Player or Disc Changer**—Lets you play DVD and CD (when DVD supports CD) selections and view cover art, title, info, results, media, and disc list.

Possible buttons

One or more of these buttons may appear in the center pane depending on which category you select:

- **Edit**—Lets you edit the information for an existing album or movie.
- **New**—A dialog box opens. You can add information for a new album or movie, etc.
- **Delete**—Lets you remove an existing item from the list.
- **Add**—Lets you add media to your system, for example, MP3, WMA, MP4, FLAC, or AAC files.
- **Scan**—Lets you scan the selected media type or storage location for music or media information
- **Configure**—Lets you select the storage device on which the media you're configuring resides.

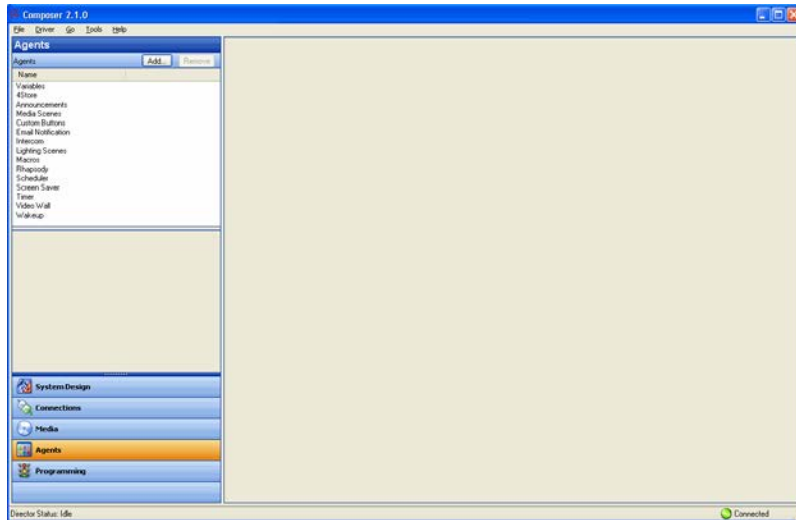
Right-click options

- Right-click on a device in *Stored* media or *Broadcast* media to bring up various options:
 - **Clear Media List**—Use *Clear Media List* with caution because it clears all media from the device—and for a controller, you will have to start over by adding each album again.
 - **Export Media List and Export Playlists**—Lets you save an XML file of your lists; if you ever clear your project you won't have to rebuild the lists.
 - **Import Media List and Import Playlists**—Lets you recover your media lists after you've cleared your project.
 - **Import DVD List from File**—Lets you import an Excel list of DVD titles for a Disc Changer.
 - **New Playlist**—Lets you create a playlist which appears in the Playlists type.
 - **Delete Playlist**—Lets you delete an existing playlist.
 - **Rename Playlist**—Lets you rename an existing playlist.
- Right-click on **Playlists** to display *New Playlist*.
- Right-click on a **playlist name** to display these options:
 - Export Playlists
 - Import Playlists
 - New Playlist
 - Delete Playlist
 - Rename Playlist
- Right-click on the individual **songs** in the window below the albums to edit song information or delete individual songs.

Agents view

Use the *Agents* view to perform more complex programming by module.

Note: *The sections that describe programming with agents are in the [Composer Pro User Guide](#).*



To access the **Agents** view:

- 1 Click **Agents** at the bottom of the System Design pane.
- 2 In the **Agents** pane, view the list of agents and their variables.

Available agents include:

- 4Store
- Access
- Advanced Lighting Scenes
- Announcements
- Communication
- Custom Buttons
- Email Notification
- Intercom
- Light Properties
- Lighting Scenes
- Macros
- Media Scenes
- Notification
- Scheduler
- Screen Saver
- SNMP Configuration
- Timer
- Variables
- Video Wall
- Wakeup

Example: The Scheduler agent lets you program using dates and times. See “Programming the system” or “Programming with agents” in the [Composer Pro User Guide](#) for definitions and examples.

Common buttons available on some agents in the **Agents** view:

- **Add**—Lets you add agents to your system.
- **Remove**—Lets you remove agents from your system.

- **New**—Lets you create a new instance for customizing the selected agent in the *Agents* pane. For each specific instance of the agent, you provide a unique name and customize it according to your needs.
- **Delete**—Lets you remove an existing instance of the selected agent in the *Agents* pane.
- **Save**—Lets you save the agent-specific information. Not all agents require a manual save option. In most cases, the agent information saves automatically.

Programming view

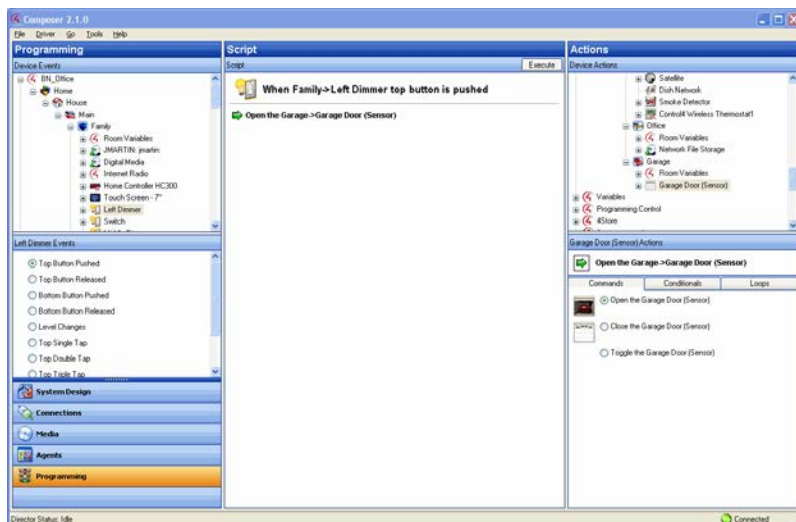
Use the *Programming* view to have the Control4 system control devices by identifying to the system any device behavior or configuration options that you want to occur automatically. The Programming view lets you create a program script using the drag-and-drop method.

Note: *Programming is an advanced feature in Composer Pro. Detailed information about programming is explained in the [Composer Pro User Guide](#). This section discusses some basics.*

All programming is based on events in the Control4 system. For example, a door that opens is an event. When an event occurs in the system, it can trigger other programmed actions to run.

Example: *When the Bathroom door opens (event occurs), program the Bathroom light to turn on (action taken).*

Another example is shown in the figure below. Note the text in the *Script* pane (center pane). The event is “When the Family > Left Dimmer top button is pushed,” and the action is “Open the Garage > Garage Door (Sensor).” The event came from the *Events* pane, and the action came from the *Actions* pane.



To access the *Programming* view:

- 1 Click **Programming** at the bottom of the System Design pane.
- 2 In the *Programming* pane, view the list of *Device Events* (see below) and events for the object selected.

The *Programming* view consists of several panes:

- **Programming:**
 - **Device Events (left pane)**—Displays all devices that have associated events in the project tree.

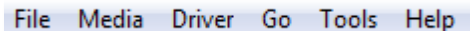
- **<Device> or <Room> Events (left pane)**—Displays the available events for the currently selected device or room in the *Device Events* project tree. If there are no events for that device or room, none are displayed.
- **Script (center pane)**—Displays the script associated with the currently-selected event from the *Device Events* pane. You drag-and-drop an action from the *<Project Title> Actions* pane to arrange the order of actions and nest them in the *Script* pane.
- **Actions:**
 - **Device Actions (right pane)**—Displays all available device options with associated actions you can use to write your script.
 - **<Project Title> Actions (right pane)**—Displays the *Command*, *Conditionals*, and *Loops* tabs. You move commands, conditionals, and loops into the *Script* pane from this pane.

To add an action to the script:

- 1 Select the device in the *Device Action* project tree (right pane).
- 2 Select the type of action you want in the *Actions* pane.
- 3 Click the green arrow.
- 4 Drag and drop the action to the *Script* pane.
 - **Commands tab**—Use this tab to select commands (delete, add, etc.) to use for your script.
 - **Conditionals tab**—Use this tab to select conditionals ('if' statements) to use for your script.
 - **Loops tab**—Use this tab to select loops ('while' statements, etc.) to use for your script.

Composer Pro menu options

When you start Composer Pro and connect to Director, the menu bar appears at the top of the Composer screen.



File Media Driver Go Tools Help

The menu bar provides the following menu items:

- **File**—Lets you perform typical file management tasks, clear or load projects, connect or disconnect to the local Director, update both the Composer and Navigator software, and exit Composer.
- **Media**—(only appears when the Media view is selected)—Lets you perform tasks regarding music and media lists.
- **Driver**—Lets you create, copy, edit, add, or manage drivers to enable devices to work on the system.
- **Go**—Lets you access the various Composer Pro views, including System Design (Ctrl+1), Connections (Ctrl+2), Media (Ctrl+3), Agents (Ctrl+4), and Programming (Ctrl+5).
- **Tools**—Lets you view Network Tools, System Manager, Detective Suite, Reports (if installed), System Diagnostics, Account Manager, and Update Manager.
- **Help**—Lets you view this document in help form plus version information.

File menu

Access the *File* menu from the menu bar on any Composer screen.

Clear Project...	Ctrl+N
Load Project...	Ctrl+O
Cloud Management...	
Backup to Cloud...	
Connect to Director...	
Disconnect from Director	
Back Up	Ctrl+S
Back Up As...	
Refresh	F5
Refresh Navigators	Shift+F5
Validate Project	Ctrl+F5
Exit	

From the *File* menu, you can perform project file management tasks:

- Manage the project (clear, load, back up, etc.).
- Manage cloud backups.
- Connect to Director.
- Refresh Composer Pro.
- Refresh the Navigators: touch screens, Control4 apps, or on-screen Navigator.
- Validate Project

The file management options apply to the files you back up on your computer called *project files* (project name plus a .c4p extension). Project files are saved by default to the My Documents directory under Control4/Projects.

When you set up a Control4 system, you create project configuration information. This information is created live on the controller hardware, or backed up to a project file on a computer that lets you save specific information about each system, including devices, connections, configuration, programming information, and media. The project configuration is automatically stored on the controller hardware to which you are connected from your computer.

Backing up the project lets you save a copy of the project on your computer which is always recommended whenever you make changes in Composer Pro or update the system.

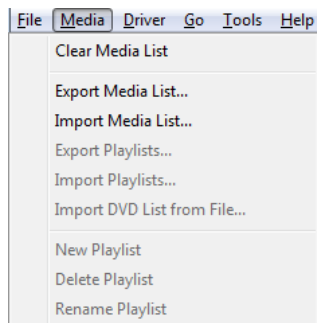
The following options are available:

- **Clear Project**—Removes any project configuration from the hard drive on the controller. Composer Pro prompts you for a backup before erasing the project configuration information to present a blank project. Use this option with caution.
- **Load Project**—Loads a selected project into the currently-connected controller. Composer Pro prompts you for a backup before it clears the project configuration information, and replaces it with a selected project you can browse to and load.
- **Cloud Management**—Manage online backups saved from the registered system. You can load a cloud project to the controller, delete a cloud project, add a project to the cloud, show a history of cloud backups for this project, and save a cloud project to your local computer.
- **Backup to Cloud**—Creates a backup of the project and saves it to Control4 online services. Requires a valid 4Sight subscription.
- **Connect to Director**—Connects you to a Director residing on the controller. When you connect, project configuration information from the controller is presented to the screen in Composer Pro.
- **Disconnect from Director**—Disconnects you from a Director. Composer prompts you to back up your project before disconnecting you from the currently-connected Director. This option is available when connected to a Director.

- **Back up**—Backs up the current project to your computer. The first time you back up your project, Composer prompts you for a filename. It also prompts you to back up any media information. If you select this option, the current project becomes an option in the File > Load Project list.
- **Back up As**—Backs up the current project, and prompts you to enter the name of the file. It also prompts you to back up any media information. If you select this option, the current project becomes an option in the File > Load Project list.
- **Refresh**—Refreshes the current Composer Pro project.
- **Refresh Navigators**—Refreshes the Navigators connected to the system. **Note:** Control4 for PCs and tablets must be updated in that app. Control4 for iPhone, iPod touch, iPads, and Androids will update if online.
- **Validate Project**—Performs a check for project file integrity.

Media menu

Access the *Media* menu from the menu bar in the *Media* view.



From the *Media* menu, you can create, delete, and rename playlists. You can also clear, export, and import media lists. A Media List is the list of media information associated with the selected device, for example, all DVDs with associated cover art, title, notes, etc., for each DVD in a disc changer.

The media has been scanned or manually added to the media database. After you add an item to the media database, the cover art and information about the media can be viewed and selected from any of the Navigators (touch screens, Control4 apps, and on-screen navigators, etc.).

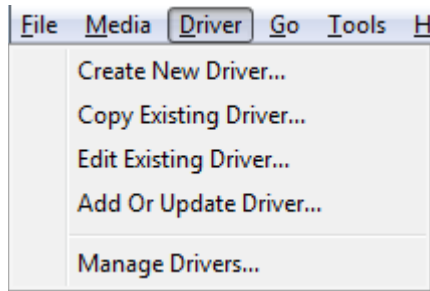
The following options are available:

- **Clear Media List**—Clears the media list of the selected device from the media database.
- **Export Media List**—Exports a media list for the selected device from the controller to a PC.
- **Import Media List**—Imports a media list from the PC to the controller.
- **Export Playlists**—Exports a playlist from a controller to a PC.
- **Import Playlists**—Imports a playlist from the PC to a controller.
- **Import DVD List from File**—Imports an Excel list of DVD titles for a Disc Changer.
- **New Playlist**—Creates a new playlist from a controller to a PC.
- **Delete Playlist**—Removes a playlist.
- **Rename Playlist**—Renames a playlist.
- **Tag media files**—Used for OS 2.0 or later conversion of media files so all media players can see the same tags.

Driver menu

Access the *Driver* menu from the menu bar on any Composer Pro screen.

Note: You may prefer to use the new *Driver Editor* tool released in 2012. Check with your Control4 Sales Representative for details.



From the *Driver* menu, you can create, copy, or edit drivers. You can also manage the local database of drivers and add other drivers from the online database as needed.

Note: Creating a new device driver is an advanced procedure. See "Creating device drivers" in the [Composer Pro User Guide](#) for details.

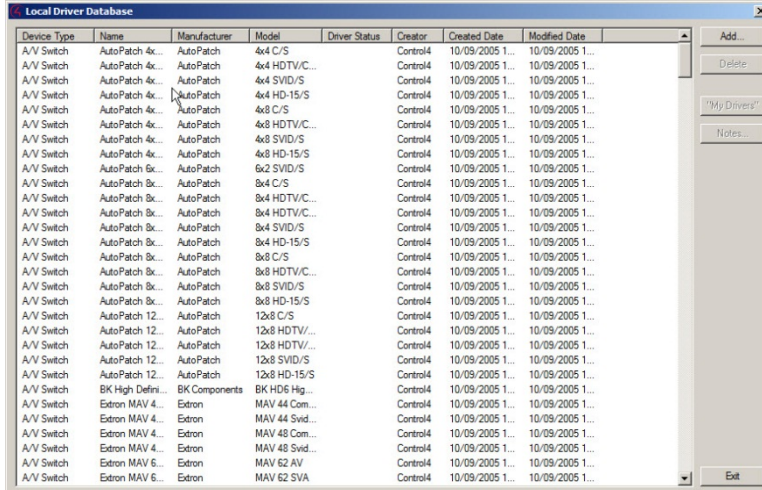
The following options are available:

- **Create New Driver**—Launches the *Driver Wizard* and lets you create a new driver based on the typical features of a particular device type, such as DVD players, and TVs. See "Create, copy, and edit drivers with Driver Wizard."
- **Copy Existing Driver**—Launches the *Driver Wizard* and lets you copy an existing driver model. For example, if a driver exists for a device from a particular manufacturer, but it isn't the same model, you can modify the driver for the model you need. See "Create, copy, and edit drivers with Driver Wizard."
- **Edit Existing Driver**—Launches the *Driver Wizard* and lets you modify an existing driver. This is mostly for testing purposes. After you create a driver, you can test the driver by adding it to the Control4 system to see if it functions correctly. The Edit feature allows you to make modifications when necessary. See "Create, copy, and edit drivers with Driver Wizard."
- **Add Driver**—Lets you search the local database to add a .c4i driver if it doesn't exist in the project. Director will load the new driver, but you will have to add the driver to the project. You can use *Update Driver* to replace an existing one. This option is used mostly with DriverWorks. See [Composer Pro User Guide](#) for details.
- **Manage Drivers**—Lets you manage drivers in your local database and the drivers on the My Drivers tab. See "Manage Drivers dialog."

Tip: You can also right-click the driver in the project tree to: *Rename, Edit Driver, Export Driver, Update Driver, or Delete a driver.* For OS 2.0 or later, use the same procedure for *Update Driver* as with *Add Driver* (see above). However, *Update Driver* updates your driver if it IS in your project. **Note:** If the driver connection IDs change, the driver will need to be connected again. Double-check your connections after you update your driver.

Manage Drivers dialog

Access the *Manage Drivers* dialog from the *Driver > Manage Drivers* menu item on any Composer Pro screen.



From the *Manage Drivers* dialog, you can organize the device drivers (or drivers) in your local database. You can sort by *Device Type*, *Name*, *Manufacturer*, *Model*, *Driver Status*, *Creator*, *Created Date*, and *Modified Date*.

Buttons

- **Add**—Lets you add drivers from the Control4 online database to the local driver database (Local Database). When the dialog appears, from the pull-down menus, select the **Device Type** and **Manufacturer** of the device you want to download, and then click **Search**. Check the driver you want to add to the local driver database, and click **OK**. This adds the device driver to your local database.
- **Delete**—Lets you delete a driver from the local driver database.
- **My Drivers**—Lets you add the selected driver to the *My Drivers* list. In the *Manage Drivers* dialog, you select a device or use the **Shift** (to add multiple drivers) or **Ctrl** keys (to add multiple drivers all in a row).
- **Notes**—Lets you add notes about your drivers.
- **Exit**—Lets you exit the Manage Drivers dialog.

Other options

- **Sort**—Lets you sort and find drivers by column and by *Device Type*, *Name*, *Manufacturer*, *Model*, *Creator*, *Created Date*, and *Modified Date*. Click the **top** of each column to sort accordingly. Click on the column **head** to sort the column.

Create, copy, and edit drivers with Driver Wizard

To enhance device support in Composer Pro and in the Control4 system, a device needs a corresponding driver, known as a device driver.

If you want to add a device to the Control4 system, and it does not have a supporting driver (or one that you can find in the online database), you can use the built-in *Driver Wizard* in Composer Pro to create a driver prior to setting up the device. You can access the wizard from the *Driver* menu > *Create New Driver*.

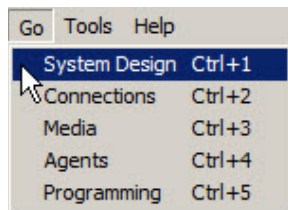


The *Driver Wizard* lets you add device support to the system for infrared (IR) or serial drivers.

For more information and example implementations, see “Overview of creating device drivers” and “Using the Driver Wizard” in the [Composer Pro User Guide](#).

Go menu

Access the Go menu from the menu bar on any Composer Pro screen.



From the *Go* menu, you can access the various Composer Pro views: *System Design* (Ctrl+1), *Connections* (Ctrl+2), *Media* (Ctrl+3), *Agents* (Ctrl+4), and *Programming* (Ctrl+5). This is an alternative to using the buttons (left side at the bottom).

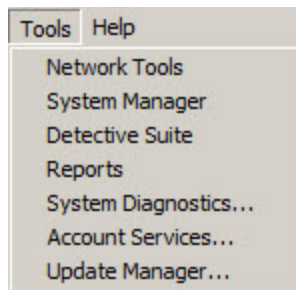
The following options are available:

- **System Design**—Lets you build the project tree and identify the devices in the Control4 system. Access this view with the keyboard shortcut **Ctrl+1**.
- **Connections**—Lets you identify all connections (Room, Control, AV, Network). Access this view with the keyboard shortcut **Ctrl+2**.

- **Media**—Lets you add and scan stored or broadcast media. Access this view with the keyboard shortcut **Ctrl+3**.
- **Agents**—Lets you set up agents for use on the system and programming. Agents include: Lighting Scenes, Wakeup, Scheduler, Variables, etc. Access this view with the keyboard shortcut **Ctrl+4**.
- **Programming**—Lets you program devices and agents on the system. Access this view with the keyboard shortcut **Ctrl+5**.

Tools menu

Access the *Tools* menu from the menu bar on any Composer Pro screen.



From the *Tools* menu, you can access tools for checking the device connection status.

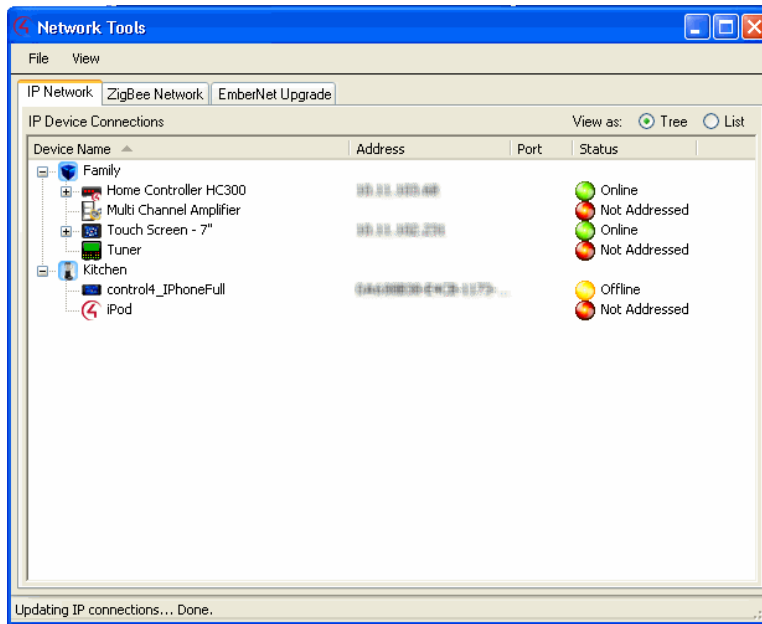
The following options are available:

- **Network Tools**—Launches the *Network Tools* window. Composer shows the status of all network devices on the *IP Network* and *ZigBee Network*. The *Network Tools* window shows you which devices in your project are identified and communicating to the network. See “Network Tools dialog.”
- **System Manager**—Launches a tool to connect to and configure Control4 Controller hardware and devices. See “System Manager.”
- **Detective Suite**—Launches a suite of diagnostic tools: Bindings, Discovery, Performance, Programming, and ZigBee.
- **Reports**—Lets you select one of the Centralized Lighting reports to run: Panel Report, Module Report, or Load Schedule Report. See “Reports” in the Composer Pro User Guide for details.
- **System Diagnostics**—Assists you in gathering system information to help you determine if any issues encountered are configuration problems, performance issues, or potential defects. The System Diagnostics tool is valuable also for logging information and sending email to Control4 Technical Support. See “System Diagnostics.”
- **Account Services**—Facilitates system registration which is required for software updates and to use the media services throughout the Control4 system. It is also required in conjunction with a customer account to enable Remote Access, which allows secure access to your system via the Internet. See “Account Services.”

Network Tools dialog

Use the *Network Tools* dialog to view ZigBee devices and devices on the IP network.

From the *Tools* menu, select **Network Tools**.



The *Network Tools* tabs describe the following:

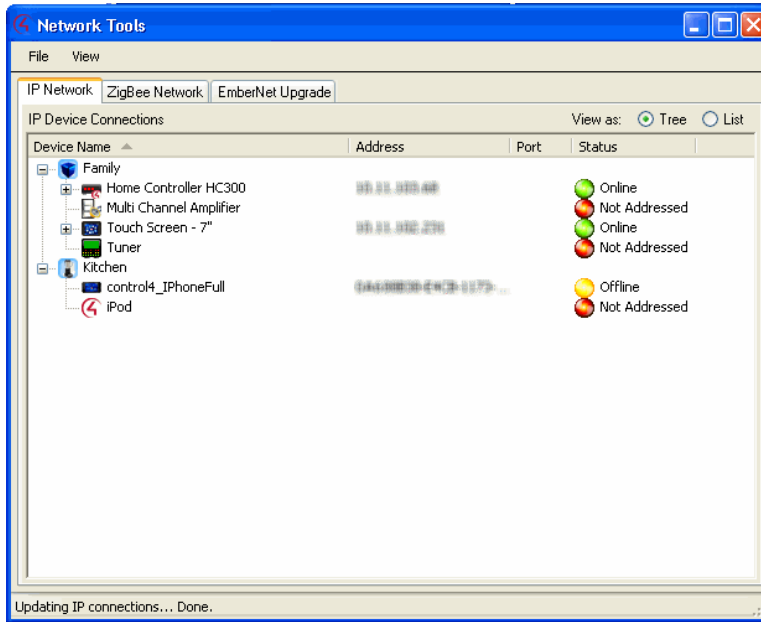
- **IP Network**—Lists the devices on the IP network.
- **ZigBee Network**—Lists information about the ZigBee devices.

The icons denote the following:

- **Green**—Indicates that an address is identified and the device is *online*. For example, a dimmer is identified and communicating to the Control4 system.
- **Yellow**—Indicates that an address is identified and the device is *offline*. For example, if the System Remote Control goes to sleep, the status turns yellow. This indicates that the System Remote Control has been identified, but it is offline.
- **Red**—Indicates that a device is not identified or has been offline for a long period of time. In this case, go to the **Connections** view > **Network** tab and identify the device to the system.

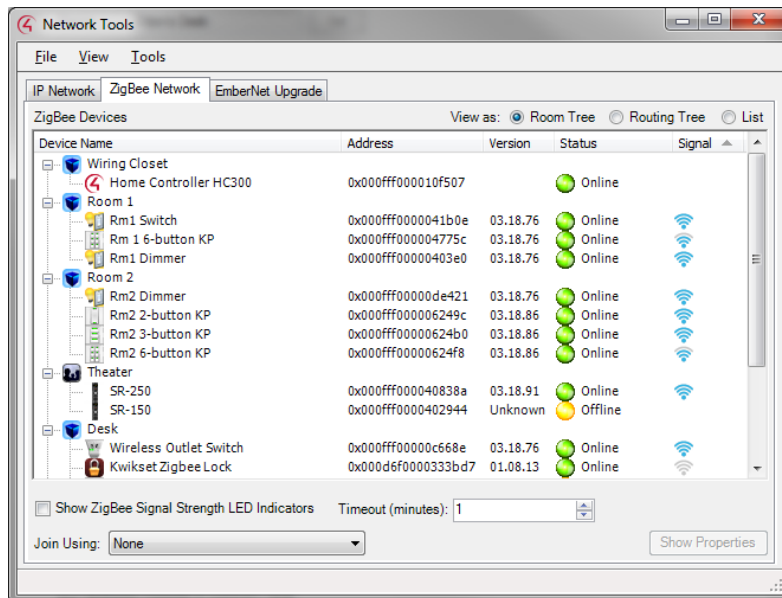
The *Network Tools* tabs are shown below.

IP Network tab



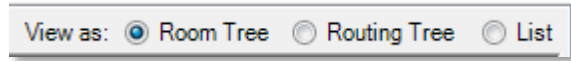
This shows the IP devices on the network, network addresses, and status.

ZigBee Network tab



This tab displays ZigBee devices, addresses, online states, and signal strengths

You can view the ZigBee network items three ways using these radio buttons:



- **Room Tree**—Takes the devices that are in the project and lists them.
- **Routing Tree**—Takes the devices from the ZigBee server. A device may display several times; there may be many ways that ZigBee communicates with a device and all of those are listed.

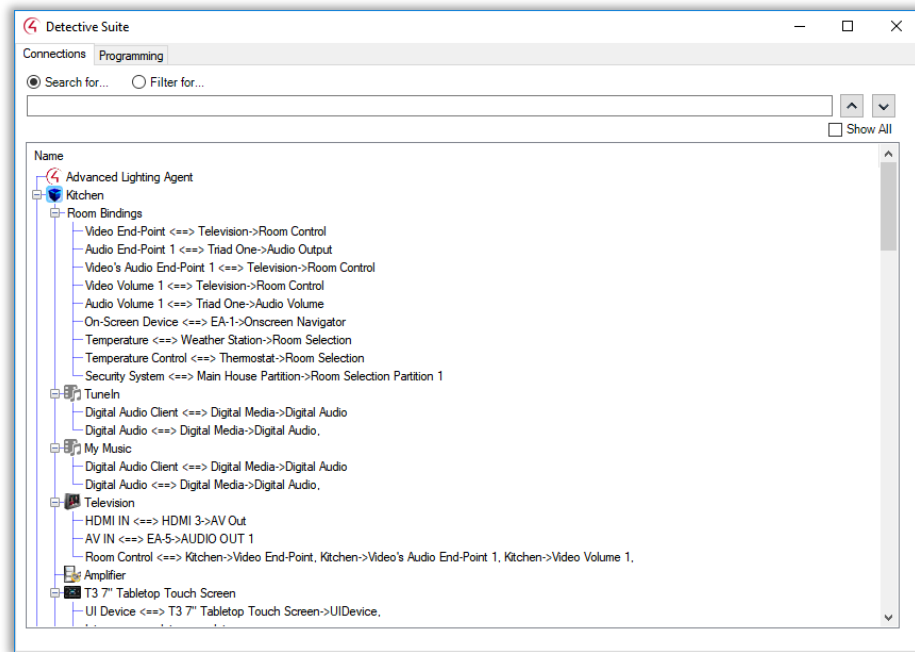
If you select the Routing Tree view and nothing appears, the ZigBee devices are not communicating. Under normal circumstances, you can view the display as it changes devices. This is due to the mesh network structure.

- **List**—Takes the devices that are in the project and lists them.

Detective Suite

Use the *Detective Suite* in Composer Pro to perform diagnostic tests on the system.

From the *Tools* menu, select **Detective Suite**. The following window appears with tabs for *Connections* and *Programming*.



Tab descriptions:

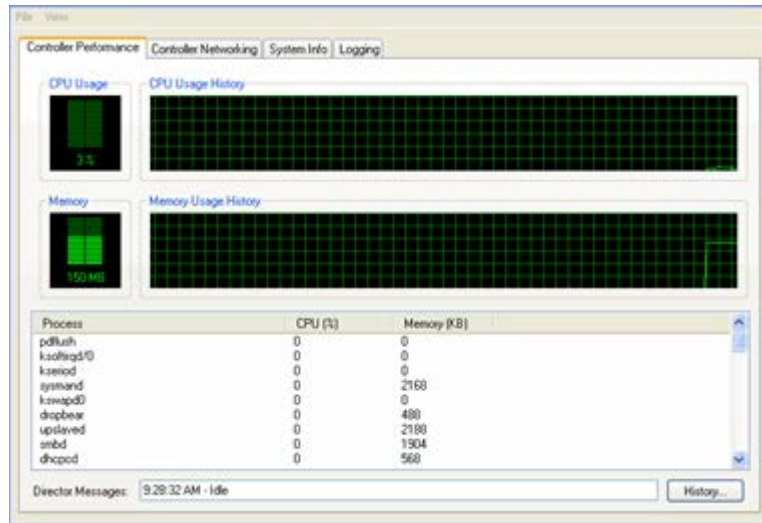
- **Connections**—Lists all the connections in the project. Lets you search by keywords, and expand by room or the whole house.
- **Programming**—Shows programming that has been created. Can expand the event to include actions.

Example pages are shown next.

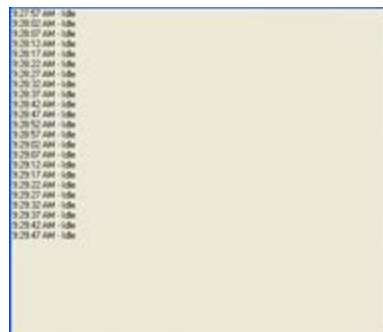
System Diagnostics

From the *Tools* menu, click **System Diagnostics**. Use these screens to help you diagnose system problems and activity.

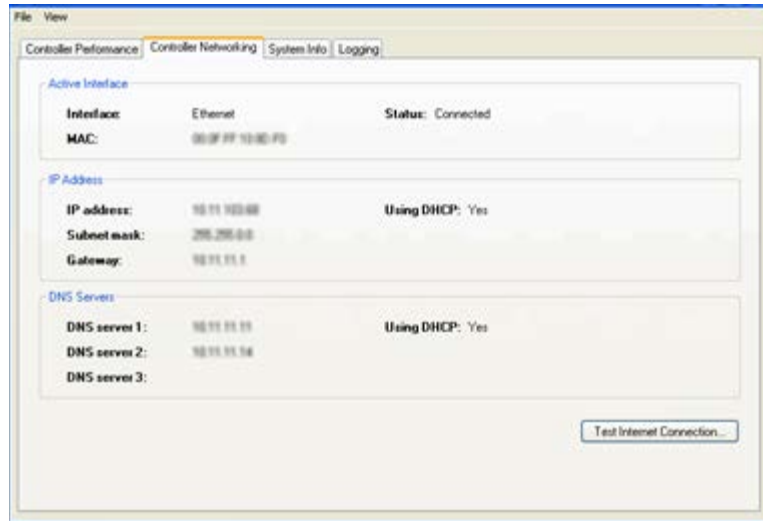
- **Controller Performance tab**—Lets you view controller performance information, including CPU and memory usage. Process data is listed in the bottom pane.



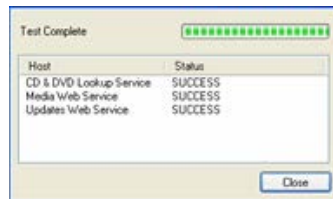
- **Controller Performance History button**—Lets you view the history of CPU and memory performance.



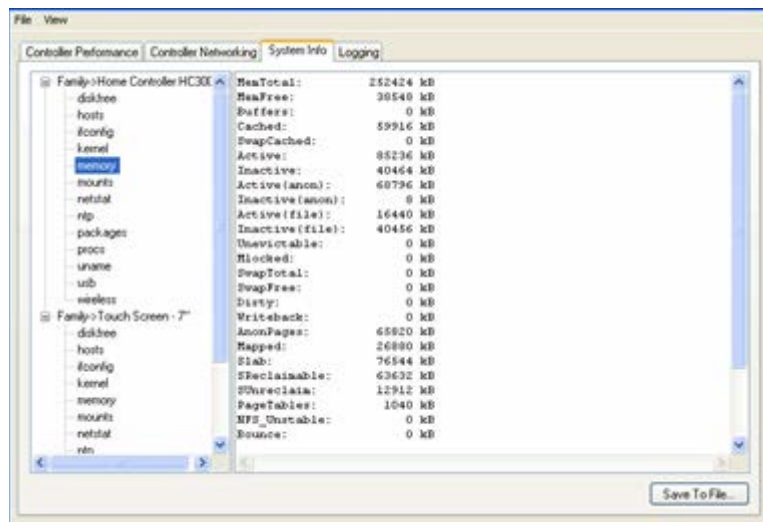
- **Controller Networking tab**—Lets you view controller networking information, including network type, connection status, MAC address, IP address, Subnet mask, Gateway, DHCP status, and DNS server information.



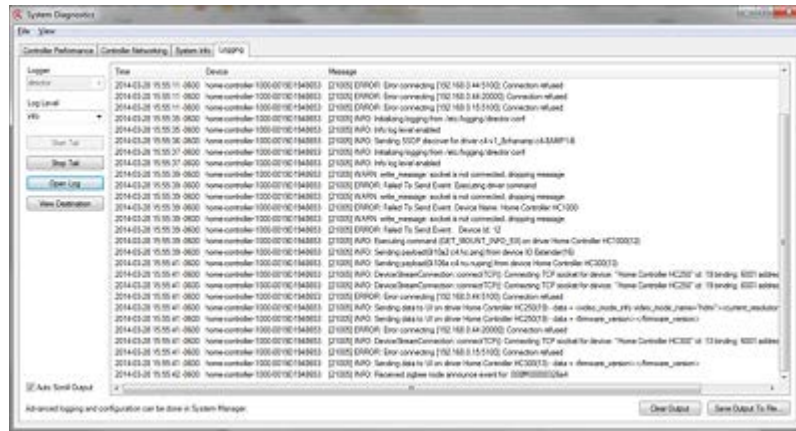
- **Test Internet Connection button**—Lets you test the current Internet connection. After viewing, click **Close** to exit the dialog box.



- **System Info tab**—Lets you view system information in a tree view. Click **Save To File** to save this information.

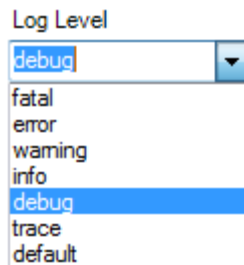


- **Logging tab**—Lets you log system problems.



This logging feature lets you:

- Change the logging level of any of the program loggers on the operating system. Select from **fatal**, **error**, **warning**, **info**, **debug**, **trace**, and **default**.



- View the selected log in real time (“Tail”). To start the tail, select the log, then click **Start Tail**. To stop the tail, click **Stop Tail**.
- Open the current log file of the selected program logger. To open the log, select the logger, then click **Open Log**.
- View all the logs available on the device at that location.
- Click **Auto Scroll Output** to scroll through the log entries, or click **Clear Output** to clear all entries.

Account Services

From the *Tools* menu, select **Account Services** to set up a customer.control4.com account and register a controller, remove a controller from registration, or check in for a service connection. To register the controller, see *Registering the Control4 system*.

You can also check the current account status and service level. Select the **Status** tab. You can view:

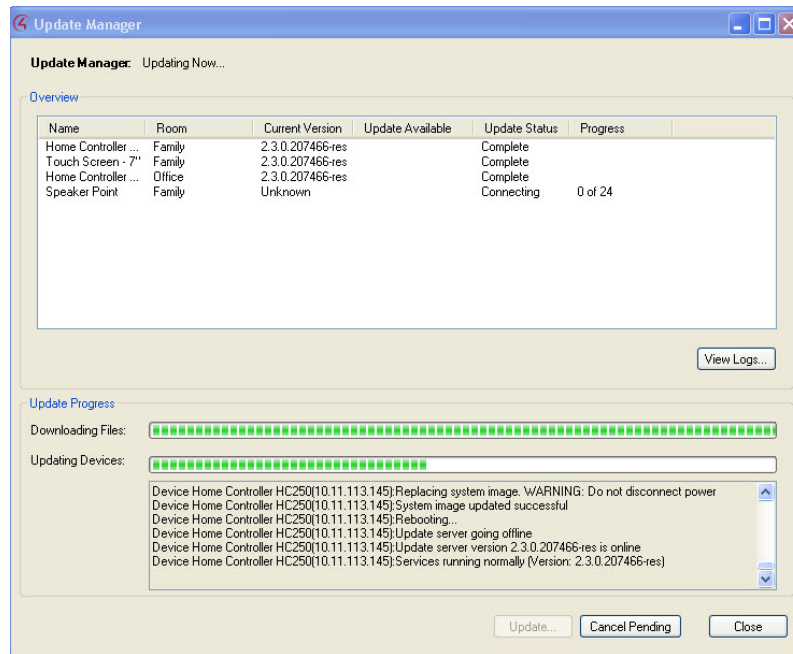
- Account Status
- Customer Account
- Customer Email
- Service Level
- VPN Status

Update Manager

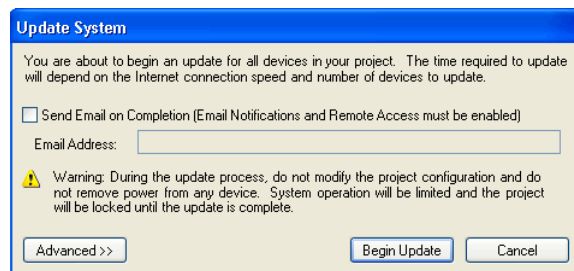
To continue to improve our products, periodically the Control4 team needs to develop updated versions of Composer Pro and Director and provide those updates to you. Use *Update Manager* to update your Composer software and the system.

To update Director:

- 1 From the *Tools* menu, select **Update Manager**.



- 2 Click **Update**.



- 3 Click **Begin Update**.

To update the system software:

- 1 Click **Update** to update the system. After you begin the updates, you cannot modify your project. Do not remove any power cords or Ethernet cables until the updates are completed. You can have an email message sent to you when the update completes to notify you when you can modify the project again. See "Programming with agents" in the [Composer Pro User Guide](#) to set up notifications.
- 2 To view the project, you can close the **Update Manager** dialog without interrupting the update, but you cannot make any changes.
- 3 Click **View Logs** in the *Update Manager* dialog to view the update messages.

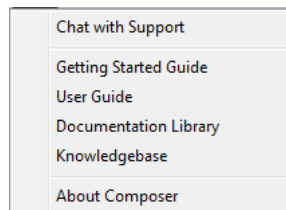
- 4 Click **Cancel Pending** to cancel the device downloads. This action cancels a download from the device.

Note: You cannot cancel an update after the device download has finished and the firmware update on the device has begun.

Help menu

From the *Help* menu, you can:

- Access the online *Help* topics, *Index*, and *Search* function for this *Composer Pro Getting Started*.
- Access a PDF of the *Composer Pro User Guide*. **Note:** Use the links in the *Composer Pro Getting Started* help topics to access the PDF for the *Composer Pro User Guide*.
- Check the Composer Pro and Director versions.
- Contact Control4 Technical Support.



The following options are available:

- **Chat with Support**—Opens a link to contact Chat Support.
- **Getting Started Guide**—Displays this Getting Started Guide
- **User Guide**—Opens a link to the *Composer Pro User Guide*.
- **Documentation Library**—Opens a link to the documentation library on the Dealer Portal.
- **Knowledgebase**—Displays the Control4 Knowledgebase login. The Knowledgebase contains documents, articles, and other sources for reference.
- **About Composer**—Displays the Composer and Director versions.

Composer Pro Properties

Access the Properties panes from the System Design view.

There are three categories of properties in a Control4 system: Project, Room, and Device properties.

- Project Properties
- Room Properties
- Device Properties
-

Accessing properties from the project tree

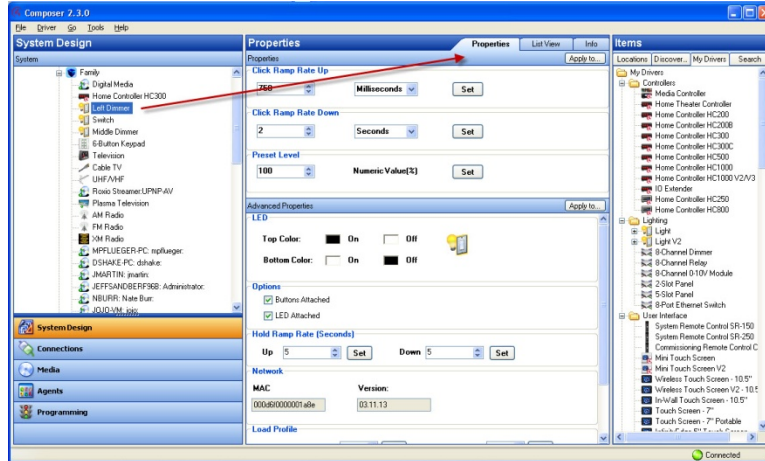
You can use the Control4 Composer Pro Properties pane to view:

- Devices
- Connections
- Status information
- Project or customer information

- Configuration information for devices and rooms

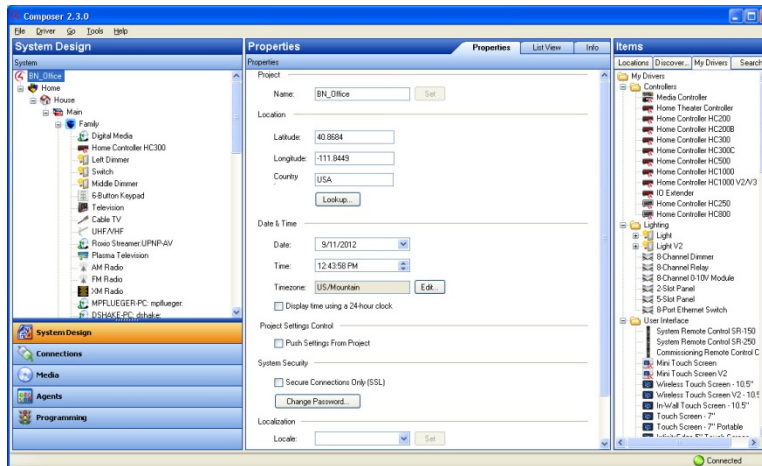
To access the Properties pane:

- 1 After adding the device and making the connections, select the **device** from the project tree in the *System Design* view.
- 2 Click the **Properties** tab. The properties for the device appear in the *Properties* pane.



Properties pane

In the *System Design* view, click the project name (top level name) in the project tree to view the project *Properties*.



The project *Properties* appear when you first start Composer Pro, or any time the project name (or root node) is selected in the project tree and the *System Design* view.

The screenshot shows the 'Properties' dialog box with the following fields and controls:

- Project:** Name: BN_Office (with Set button)
- Location:** Latitude: 40.88444, Longitude: -111.8856 (with Lookup... button)
- Date & Time:** Date: 3/12/2012, Time: 12:54:58 PM, Timezone: US/Mountain (with Edit... button), and a checkbox for 'Display time using a 24-hour clock'.
- Project Settings Control:** Push Settings From Project (checkbox)
- System Security:** Secure Connections Only (SSL) (checkbox) and Change Password... (button)
- Localization:** Locale: (dropdown) and Set (button)

This option lets you enter project-specific information; for example, the project name, location, and ZIP Code. Composer Pro automatically enters the latitude/longitude and date/time information when you provide the location and ZIP Code.

Basic Composer Pro tasks

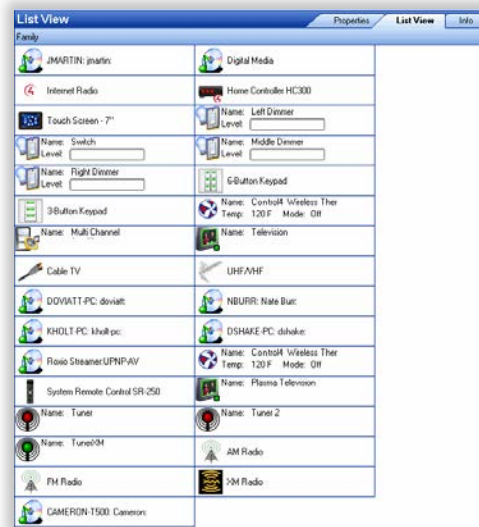
You can perform simple but important tasks in Control4 Composer Pro (see below), or you can take a deeper dive into intermediate or more advanced tasks (the [Composer Pro User Guide](#) will show you how).

Accessing the List view from the project tree

Use the *List View* tab to view the devices in your project (by room). Ensure that the devices are added and identified to the project.

To view the list:

- 1 Click **System Design**.
- 2 Select a **room** in the project tree.
- 3 Click the **List View** tab; the status of each device associated with that room displays in the *List View* pane.



Removing items from the project tree

Use the project tree in *System Design* to remove devices, rooms, buildings, etc.

To remove items from the project tree or other lists in a Composer project:

- 1 **Right-click** the item to remove in the project tree, and then select **Delete**.
- 2 Click **Yes** to confirm.

Renaming items in the project tree

Use the project tree in *System Design* to rename items.

To rename items in the project tree or other lists in a Composer project:

- 1 **Right-click** the item to rename in the project tree, and then select **Rename**.
- 2 Type the new name in the object's title.

Clearing a project

To erase all project configuration information, use the *Clear Project* menu option.

Note: Control4 recommends that you create a backup file of your project first before you use this function. To back up the project, go to the File menu, and then select **Back Up**. Give the project a filename; the file saves to the My Documents folder by default.

To clear out a project:

- 1 From the File menu, select **Clear Project** to erase the project configuration information.

Exiting Composer Pro

Use the **Exit** command to close Composer Pro.

To exit Composer:

- 1 From the File menu, select **Exit**.
- 2 Composer asks you if you want to back up your configuration information.

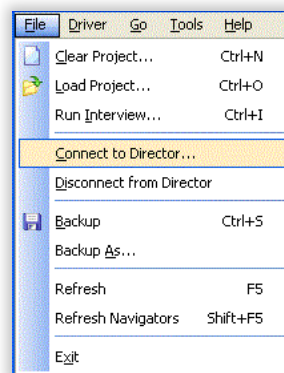
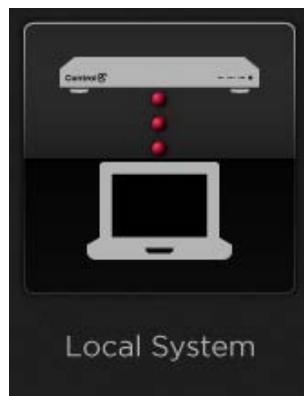
Note: Control4 recommends that you always save a backup copy of your configuration.

Getting project configuration information from a controller

Use the *Connect to Director* link to view configuration information.

To get existing project configuration data from a controller:

- 1 Verify that your PC and the controller are connected to the same network.
- 2 From the Composer Startup screen, click **Local System** or from menu bar, click **File > Connect to Director** (see below). The project configuration appears unless it is a new project.

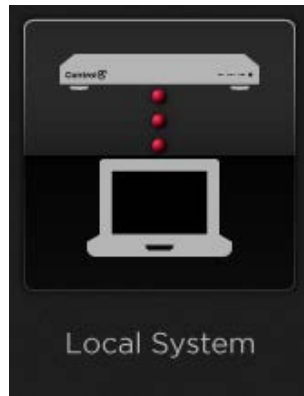


Loading a project's configuration from a computer to a controller

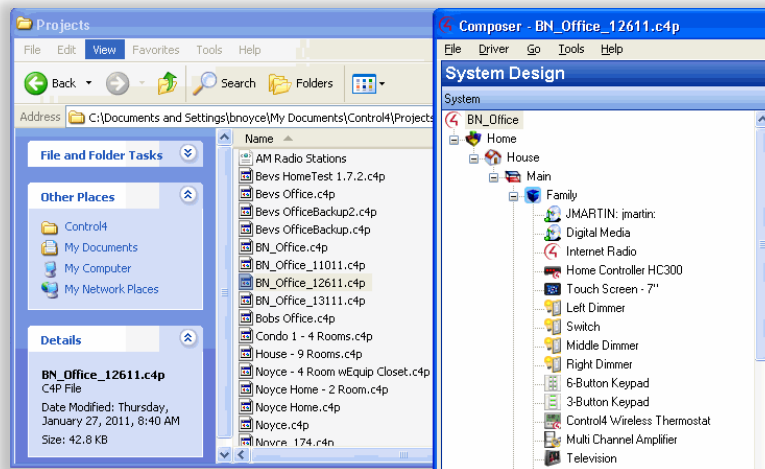
Use *Connect to Director* to load configuration information.

To load the project configuration from a computer to the controller hardware:

- 1 Verify that your PC and the controller are connected to the same network.
- 2 From the startup screen, click **Local System**, or from menu bar, click **File > Connect to Director** (see below).



- 3 From the *File* menu, select **Load Project**.
- 4 Click **Yes** when prompted to back up the project. Browse and select the project file.
Example: SmithProject.c4p
- 5 When you see the new project displayed in the *System Design* view, the project is loaded to the controller, and you are connected.



Backing up a Composer Pro project

Use the *File* menu to back up your project. Control4 recommends that you do this whenever you change anything in a project or if you update the software.

The *File* menu in the Composer screens provides the following options for backups:

- **Back Up**—Backs up the current project to your PC. The first time you back up, it prompts you for a filename. It also prompts you to back up any media information. If you select this option, the current project becomes an option in the File > Load Project list.
- **Back Up As**—Backs up the current project, and prompts you to enter the name of the file. It also prompts you to back up any media information. If you select this option, the current project becomes an option in the File > Load Project list.

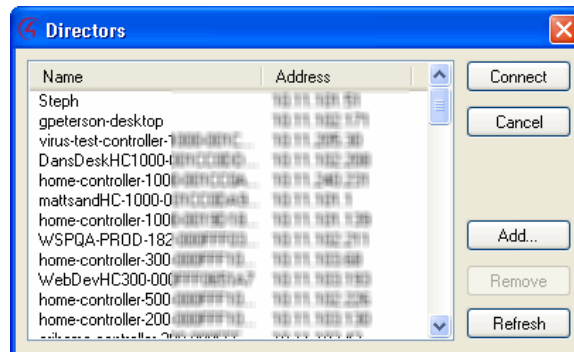
Any time you exit Composer by clicking **File > Exit**, Composer Pro asks you if you want to back up your project. If you've made changes, it's a good idea to do so.

Backing up and loading from a virtual to a local or remote Director

Use the *Connect to Director* option to back up a Director.

To back up and load configuration information from a virtual Director to a local Director:

- 1 From the Composer *File* menu, select **Connect to Director**.
- 2 When prompted, click **Yes** or **No** if you want to back up the media information.
- 3 A *Directors* dialog box appears listing the available Director IP addresses. Select the address of the controller to which you are connecting.



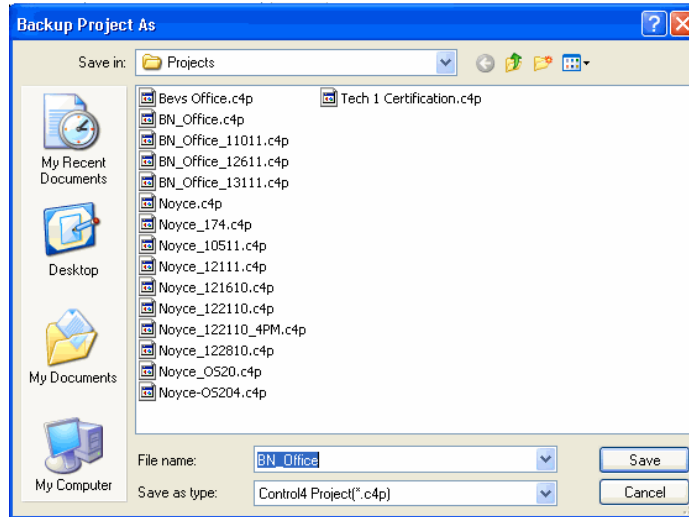
- 4 Click **Connect**. You are now connected to a local Director.

Backing up a project's configuration and media

Use Composer Pro to back up project information. When connected to the controller, changes are immediate.

To save a project configuration to your computer, and then use the Back Up and Back Up As options:

- 1 From the File menu, select **Back Up**.
- 2 Type a filename to back up the project, or use the same name, if you prefer.



- 3 When prompted, click to select the options to back up media information and personal information, then click **Save**.

Validating the project

Use Composer Pro to validate the integrity of the project file. You can validate a project while connected to a Director or Virtual Director.

To check project integrity after connecting to Director (or Virtual Director):

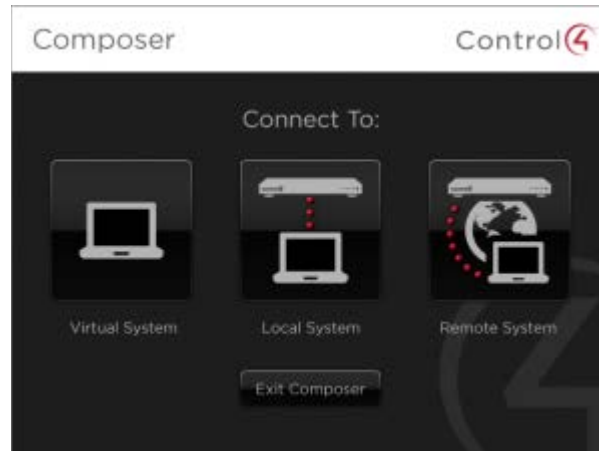
- 1 From the *File* menu, click **Validate Project**.

Composer displays any errors. If no errors are found, nothing else will be displayed.

Connecting to a Director

Each Control4 controller (for example, an EA-3) ships with pre-installed Director software. The Director communicates with Control4 and third-party products to enable home automation so devices can communicate with each other and Director.

To configure or update a Control4 system, start Composer Pro and connect to a Director.



Note: If a Composer license is associated with this product, a 'Renew Composer Registration' screen may appear before you can connect to Director. If it does, you must type your email address, password, and then click **Renew**.

On the Composer Startup screen, you can connect three ways depending on how you want to connect.

In Composer Pro, click the box that represents one of the following options:

- **Virtual System**
You cannot identify network connections, test device control, or set up media using this method. See the [Composer Pro User Guide](#) for information.
- **Local System**
You can set up and design the project, make connections, add media, and program the system using this method.
- **Remote System**
You can do everything as if you were hooked up to the Local System using this method.

Select a connection option, and then refer to the following sections for specific instructions about how to connect. See "Start Composer" earlier in this document for details about each method.

Connecting to a virtual system

If you connect to a virtual Director, you are working in Virtual Director mode. This means you are not connected to the Control4 controller and the home network, and changes are **not** automatically saved in real time to the Control4 controller.

Saving changes when working virtually

The only way your changes are saved is to manually use the **Back Up As** or **Back Up** option from the *File* menu to save the project file. The project file saves by default with a **.c4p** extension to your My Documents directory on your computer.

Using Virtual mode

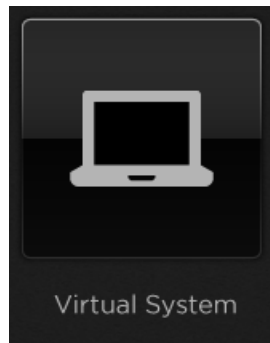
After you have designed and set up a system in Virtual Director mode, you can load the project to the controller.

The **Load Project** option is available from the *File* menu. This mode is useful, for example, if you are using a laptop PC, and you can't connect to the network.

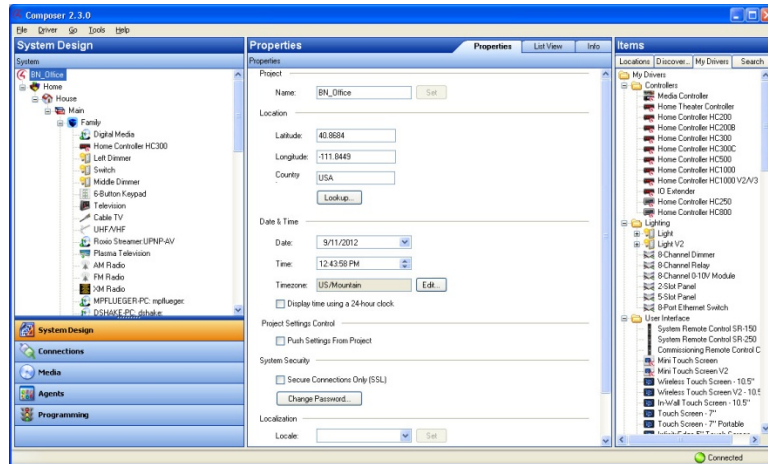
- If you change the project, you can connect to the network and synchronize your changes to the controller when you're ready.
- If you design and set up a system in Virtual Director mode, you can later load the project to the controller. In the *File* menu, the Load Project option is available for synchronization.

To connect to a virtual Director:

- 1 Start Composer and connect to a Director.
- 2 At the Composer Startup screen, click **Virtual System**. Virtual Director lets you work in Composer while disconnected from a Director. Composer opens to the main Composer view in Virtual Mode.



The *System Design* view appears by default.



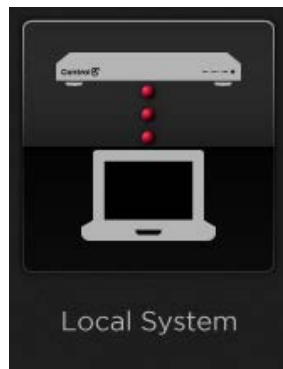
Connecting to a Director on a local network

When you connect to a Local Director, you are making 'live' changes on the controller. Every time you connect to the Director on that controller, your project opens.

Tip: You also have the option to make a backup of the project on your computer by using the **Back Up As** or **Back Up** option from the File menu to save the project file. When you back up a project file, it is backed up by default to the My Documents directory on your computer.

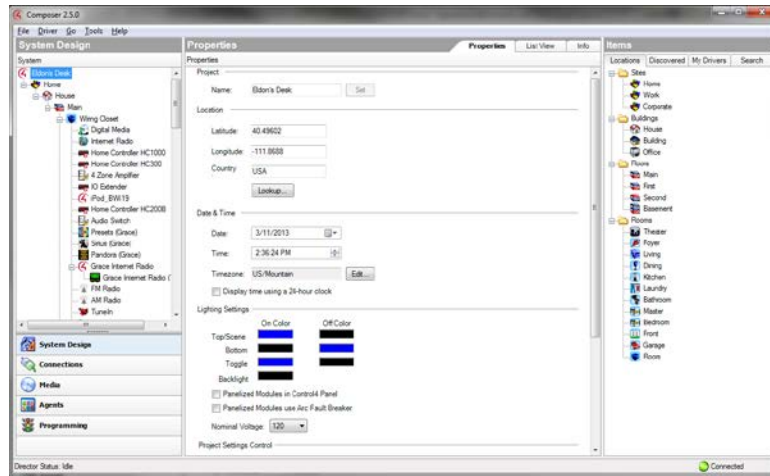
To connect to a Director locally:

- 1 From the desktop, double-click the **Composer x.x.x** icon.
- 2 At the Composer startup screen, click **Local System**. Local Director connects you to the home network while working in Composer Pro.



- 3 From the Director dialog box, select the Director's network address for the controller you are setting up, and then click **Connect**.

- 4 Make a note of the network's **IP address**. Composer Pro opens to the Composer System Design view.



Setting up Remote Access

Use a Control4 Navigator to enable or disable Remote Access. This feature lets you access your Control4 system for updates using the Internet from a remote location. **Note:** You can also set up Remote Access when you create an account at customer.control4.com.

Prerequisites

- Register the system at customer.control4.com. This process can be completed by the installer or homeowner as long as the system a Navigator, touch screen or on-screen configured in the system.

To set up Remote Access for OS 2.6 or later:

- 1 At one of the touch screens or on-screen Navigators, select **Settings > Service Connection**.
- 2 Select **Yes** under Remote Service.

Notes:

- After you enable remote access, if the user has a 4Sight subscription for this system, then the user can enter their email address and password and securely log in to their Control4 home network from any Internet connection in the world.
- When the user logs in, the homeowner can use the Web Navigator to monitor and control their lights, change their temperature (warm or cool the home remotely), or check whether any doors or windows were left open. You or the user can refer to this Internet information in the [Control4 System User Guide](#).
- If this system and controller are registered on customer.control4.com, the system is accessible for remote access (without a 4Sight subscription) after a request by the Control4 Installer or Control4 Technical Support representative has been made to access the system. After OS 2.4.0, this check-in is no longer required to initiate a remote service connection.

Connecting to a Director using Remote Access

If you connect to a Remote System, you are making “live” changes to a remote system controller, where changes are communicated over an Internet connection rather than a local network connection. This type of connection is not available, however, until the initial configuration and registration are completed.

Note: *The customer may revoke access rights through my.control4.com at any time, but this is not recommended as it interferes with routine Control4 updates.*

Requirements

- The customer must be registered at customer.control4.com and remote access must be enabled. (See “Registering the Control4 system” or “Register the controller from a Navigator.”)
- A PC with Composer initially installed must be in the same local network as the controller when remote access is set up.

Before you can use the Remote System option, you must configure the system to support remote access (see “Registering the Control4 system”).

Connecting using Remote Access

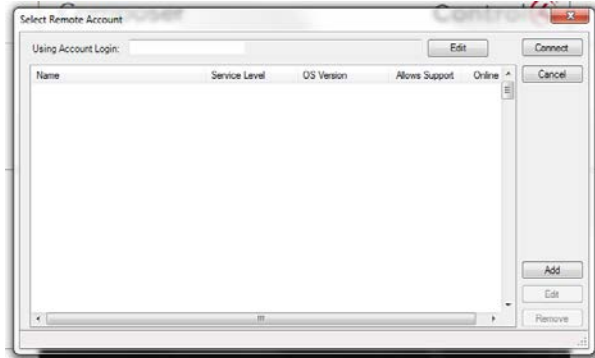
To connect to a Remote Director:

- 1 Using a PC with Composer Pro installed, verify that the PC has an Internet connection.
- 2 From the desktop, start **Composer**.
- 3 At the Composer startup screen, click **Remote System**. Remote Director connects you to the home network while working in Composer from a remote location.

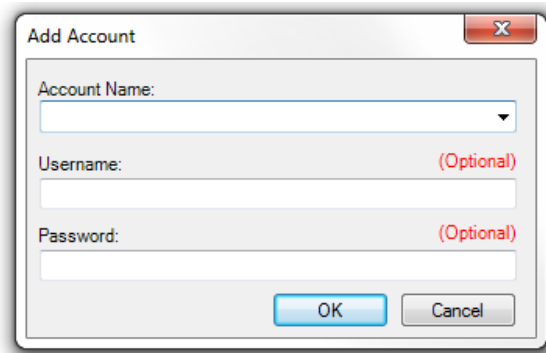


- 4 Enter your Email Address and Password in the *Account Name* dialog box. This should be the login information from your account on your dealer my.control4.com account.

- 5 When the *Select Remote Account* dialog box appears, select the account you want to access, and click **Connect**.



If the account name doesn't appear under *Name*, click **Add** to add the account name, and Username (Email address) and Password if they are different from your dealer account login credentials, and click **OK** in the dialog box that appears. This is the Account Name you created during registration at customer.control4.com. After you do this, select the account from the *Select remote account* dialog box, and click **Connect**.



The next screen shows that your account, the User Email Address, and the Password are being verified. This may take several minutes to complete as it accesses a remote connection.

When authenticated and connected through the Remote Access service, a list of Directors available for connection appears.

- 6 Select the Director you want to connect to, and then click **Connect**.

When connected, Composer opens and the main Composer view connects to the controller remotely. Composer functions normally as if you were connected to Local Director, allowing you to configure, program, and troubleshoot the Control4 system.

Ensuring that Director and Composer are compatible

Verify that the Control4 controller software (Director) and the Composer software are on the same version before beginning to design a project, or any time you use Composer to ensure the best communication between the two.

To check compatibility:

- 1 In the Composer menu bar, click **Help > About Composer**.
- 2 From the dialog that appears, compare the Composer and Director version numbers. For the Control4 system to run properly, these numbers must match. If they don't match, update Composer and/or Director to get to the same version. See the [Composer Pro User Guide](#) for information about updating your system, or see "Update Manager."

Example:

Composer version: 2.6.0.439267

Director version: 2.6.0.439267

Note that the two versions in the screen below are the same.



Designing the Control4 system

Become familiar with the Control4 Composer Pro design options before you start to build your first project and project tree. The project tree represents the hierarchy of locations (sites, buildings, floors, and rooms) AND devices in each room. You will add all types of controllable devices to the Control4 system, including audio/video, multi-room audio, lighting, motorization, sensors, relays, and more.

Here are some sections that might interest you as you prepare to design a system:

- "Introduction to Designing a Control4 System"
- "Ways to Create a Project in Composer"
- "Purpose of Device Drivers"
- "Adding Items to the Project Tree"
- "Using Composer Views to Build a Project"

In most cases, it's good to make a list of the actual devices to be used in the project, the manufacturer and the model number. You will need this information as you build the project. Also, before you start, create a plan for your project.

Tip: *It might be worth your while to check out some cool project management programs called "Smart Office" and "Control Integration" by Simply Reliable. These products help you manage your projects, from creating home automation proposals to integration of devices, into a Composer project. There's also a service called Blackwire Designs (blackwiredesigns.com) that can help with design and networking infrastructure.*

Introduction

Designing a Control4 system in Composer Pro is similar to designing a house. You start with the plan; then you build the foundation; you build the framework; and then you add the electrical, plumbing, walls, carpets, paint, etc. to finish the home.

To give you a 'bird's eye view' about how to design and implement a Control4 system:

- Create a plan. This includes the devices to be used, where they will reside in the home, and how the network will be set up. For example, to plan a Centralized Lighting project, you'll need to obtain the blueprint plan and where all of the lighting devices and panels will be located in the home, ensure that all of the lighting legs are clearly identified, determine what types of loads will be controlled by the centralized system, and where the panels will be located (see Control4 University on control4.com for more information).
- Physically install and connect the Control4 and third-party devices that need to communicate to the network. **Note:** Many Control4 or third-party devices may be installed already.
- Physically connect these devices to each other and to the controller(s) used in the project so they all communicate with the controller and the home network.
- In the Composer Pro software, build the project tree using the System Design view. This includes adding objects to the project tree that represent the physical buildings, rooms, and devices. **Note:** You can connect a physical device, and then add it to Composer one at a time if you prefer.
- In Composer Pro, identify and *virtually* connect all of the devices. In addition to the hardware connections, you have to connect your devices the same way in the Composer software also.
- Customize the behavior of the devices in Composer and on the Navigators. To customize the devices for specific functions, you program events and actions, Lighting Scenes, agents, and so on for your customers' needs. Many custom functions can be performed on the touch screens and on-screen Navigators. See the [Control4 System User Guide](#) and [Control4 Quick Start Guide](#) for more information.

Designing a fully functioning Control4 system includes these major steps:

- **Use Existing or Custom Device Drivers.** Every device in the Control4 system needs a corresponding device driver so that controlling the device is possible. When designing and implementing a Control4 system, each time you add a device to a room, a corresponding device driver must be added to the Composer project in the project tree. Device drivers for Control4 products come pre-installed in Composer. In addition, device drivers for hundreds of third-party devices are available through an online database, and easily can be added to the project when the driver is available. If a driver for the model you need does not exist, you can use the Driver Creation Wizard (available through a menu option) or DriverWorks (a free add-on utility) to create a custom driver. See the *Composer Pro User Guide* for details.

Tip: If you can't find the device driver you need, you can start with an existing device driver, and modify it for your device using the Driver Creation Wizard or Driver Editor.

- **Make the connections.** In the Composer project, you identify all physical device connections to the Control4 system, including control, AV (audio, video), network, and other connections (there are several types of connections). Identifying a device to the system means the controller acknowledges that the device exists on the home network and can communicate with it and the other devices in the network. Use the Connections view in Composer for this.
- **Register the system at customer.control4.com.** Control4 strongly recommends that you register each system you install at my.control4.com to maintain the system software easily through online downloads. Only registered systems can use all of the media services available. In addition, system registration is one of the essential steps in enabling remote access to the system.

- Set up the media. You identify existing media on the system using the Media view in Composer. The Media view helps you search or scan for movies, videos or music in stored media and auto-generate a list of local broadcast channels, stations, playlists, etc. After you have searched for or scanned in the existing media, you can test Media access through the navigation devices (also known as Navigators).
- **Configure the properties.** You will want to set individual device properties according to your customers' wishes, because most devices have some settings that can be configured (for example, dimmers that ramp up and down).
- **Program events and actions.** You define interactions between system events and the actions of other devices. For example, when a projector turns on, it can trigger other devices (lights, etc.) in the Home Theater to dim down or turn off.
- **Create the variables and agents for use in programming.** Advanced programming setup options are available to you, including string, Boolean, device properties, variables, delays, and agents. Using these options, you can configure, for example, a 3-way switch, turn equipment on and off with proper delay times, create Lighting Scenes, and perform other desired programming between devices. Advanced programming is discussed in the [Composer Pro User Guide](#).
- **Customize the Navigators.** You complete the registration process and enable Remote Access. You can work with your customers also to set up screen savers and other custom functions on their Navigators.
- **Centralized Lighting design.** Designing for a Centralized Lighting system is a bit more complicated than designing a typical control system. For details about Centralized Lighting, see the Centralized Lighting Products section on the Control4 website, and take available training classes.

Purpose of device drivers

Every device in the Control4 system needs a corresponding device driver so the device can be controlled by the Control4 system. When you design a system in Composer, the corresponding device driver is added to the project each time you add a new device to a room.

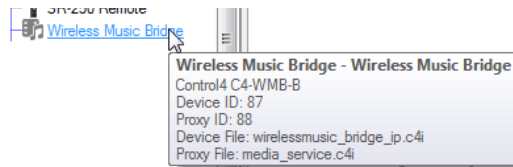
Device drivers for Control4 products come pre-installed in Composer. Device drivers for hundreds of third-party devices are available through an online database and can be added easily to the project. If a driver for the model you need does not exist, you can use the Driver Wizard to create a custom driver.

Note: *Creating a device driver is an advanced skill in Composer. For detailed information about how to create a driver, see “Creating device drivers” in the [Composer Pro User Guide](#).*

Adding items to the project tree

To add items to the project tree or other lists in a Composer project, use one of these methods:

- **Double-click**—After selecting a location in the project tree, double-click an item in the Items pane to add it to a selected location in the project tree.
- **Drag and drop**—Drag and drop items (such as building, floors, rooms, devices, etc.) from the Items pane to the desired location in the project tree. When dragging-and-dropping items, drag the item directly on top of the room or location (such as site, building, floor) in the project tree (left pane) where you want the item to reside.
- **Hover**—After you've added an item to the project tree, you can hover over it for a pop-up of important identifying information.



Example: Drag a device (for example, a television) directly on top of the Theater room to ensure it resides in that room.

Building a project in System Design

Using the *System Design* view, you create the foundation of the Control4 system by building a project tree in *System Design*.

Tip: Before you begin to build the system, you may want to assign to all of the devices that will be used in the Control4 system unique and meaningful titles if you used a planning worksheet. That way, they will be easy to identify when you connect them to the home network.

To build a new project tree in System Design:

- 1 Start Composer Pro and connect to a Director. A new project opens in the *System Design* view by default.
- 2 In *System Design*, click the **Properties** tab, and enter the following information:
 - **Name**—Enter homeowner’s name or other project name.
 - **ZIP Code/Postal Code**—In Lookup, enter the homeowner’s ZIP Code.
 - **Latitude and Longitude**—Populated automatically when you enter a ZIP Code or postal code.
 - **Date**—Update as needed.
 - **Time**—Update as needed.
 - Click to select the project tree.

- 3 **Add the locations** to the project tree, including sites, buildings, floors, and rooms.

Composer Pro requires this location hierarchy: Site > Building > Floor > Room. The devices will be added to the rooms later.

Tip: You do not have to add every level in the hierarchy manually. If you begin building your project tree by adding a room, Composer Pro automatically adds a Building and Floor object for you. You can easily rename these objects in the tree later.

- a In the project tree, select a location (site, building, or floor) where a room exists.

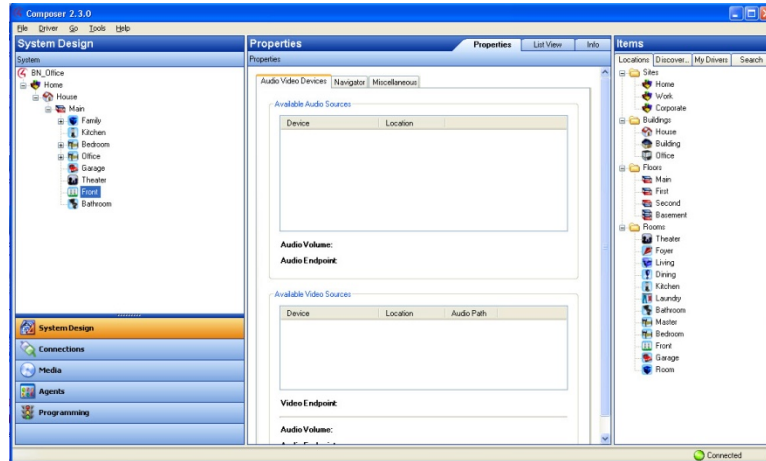
Example: The Master Bedroom is on the Second floor, so you would click **Second** to select it. Go to the Items pane and double-click or drag-and-drop **Master Bedroom** to copy it to the project tree.

- b In the Items pane > Locations tab, double-click the **room** you want to add. The room displays in the selected location in the project tree. The room is given a default name, but you can rename it any time by right-clicking on the object in the project tree, and choosing **Rename**.

- c Repeat these steps until you have included all of the floors and rooms on each floor in the home to complete your project.

Example: Add three rooms to the Main floor which already has a few rooms and the Garage.

- d Click **Theater** in the Items pane > **Locations** tab to add a Home > **House** > **Main** > **Theater** to the project tree.
- e Select **Main** in the project tree, and then click **Bedroom** to add it to the Main floor.
- f With **Main** still highlighted in the project tree, click the **Front** room to add it to the Main floor.



- 4 Click the **room** and **add** the devices. For example, add the **controller** in a room of the project tree.

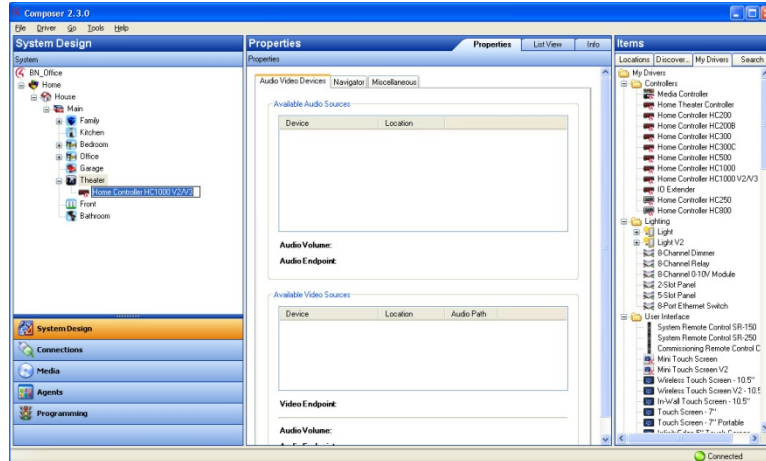
Important: Ensure that the devices you select have exact and meaningful titles; for example, “Wireless Dimmer” could be renamed to **East Wall Wireless Dimmer** for easy recognition later. If you have several devices, such as wireless dimmers, in the same room give them a unique name.

Tip: You can right-click the driver in the project tree to: *Rename, Edit Driver, Export Driver, Update Driver, or Delete a driver.* Use the same procedure to Update Driver as for Add Driver (see “Driver menu”).

Note: If you installed this version of Composer on a computer that has an older version of Composer (OS 2.2 or earlier), right-click in the white space below the My Driver tab and select **Restore Default List**. This action updates the My Drivers list.

- a Click the room in the project tree.
- b From Items pane > My Drivers tab, double-click a controller to move it to the selected room (all devices to be added must be selected from the My Drivers tab).

Example: Select the **Theater** room, and then double-click the **controller**. The controller and associated Digital Audio objects appear in the project tree. Digital Audio is a component that resides on the controller, but shows up as a separate object in the project tree. Digital Audio provides the functionality to play media.



5 Add the Control4 lighting devices and Navigators to the selected room if they reside there.

Example: Add the following devices to the Theater room.

- a Double-click **Wireless Dimmer**, and then rename it to **Dimmer**.
- b Double-click **Wireless Switch**, and then rename it to **Light Switch**.
- c Double-click **Wireless Outlet Switch**, and then rename it to **TV Outlet Switch**. (This will be used to control the power on a TV that uses an On/Off toggle switch.)
- d Double-click System Remote Control SR-250.
- e Double-click **6 Button Keypad**.

Note: If you have a wireless touch screen, add it now to your project.

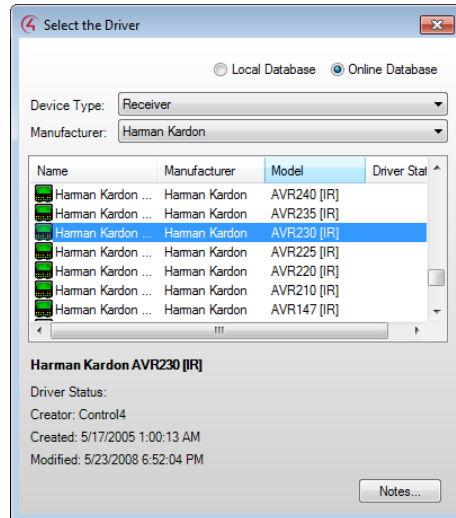
6 Add all applicable audio and video devices to the selected room.

Here are three examples to follow.

Example 1: Add a receiver to the Theater room

- a Select the **Theater** room in the project tree.
- b Double-click **Receiver** in the Audio/Video section of the My Drivers tab. A dialog box displays with Local Database selected and the receiver drivers that are currently available in the local database.

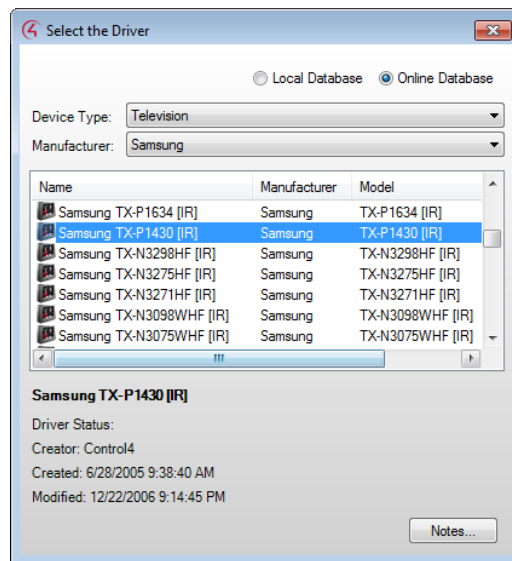
- c Select the receiver's **manufacturer** and **model**. In the dialog box, select **Online Database**, select the manufacturer **Harmon Kardon**, and then double-click **AVR230[IR]**.



Note: The Receiver object is added to the tree, along with a Tuner. The next time you add a receiver to this project, the AVR230[IR] will appear in local database driver list.

Example 2: Add a TV to the Theater room

- a Select the **Theater** room in the project tree.
- b Double-click **Television** in the Audio/Video section of the My Drivers tab. A dialog box displays with local database selected, and the TV drivers currently available in the local database.
- c In the dialog box, select **Online Database**, select the manufacturer **Samsung**, and then double-click **TX-P1430[IR]**.

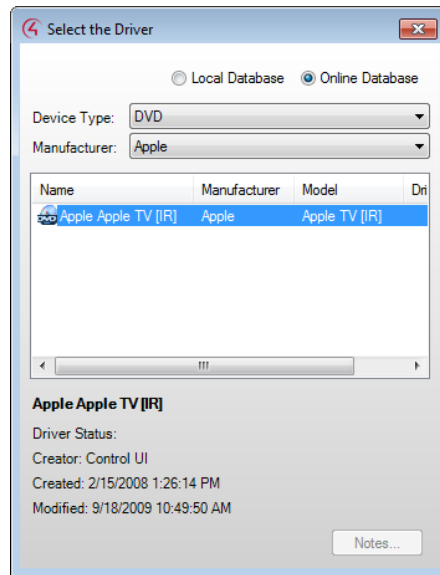


Notes:

- The UHF/VHF object is added automatically to enable you to scan for UHF/VHF broadcast channels.
- The next time you add a TV to this project, the TX-P1430[IR] appears in the local database driver list.

Example 3: Add the DVD player to the Theater room

- Select the **Theater** room in the project tree.
- Double-click **DVD** in the Audio/Video section of My Drivers tab.
- In the dialog box that appears, select **Online Database**, select the manufacturer **Apple**, and then double-click DVD **Apple TV [IR]**.

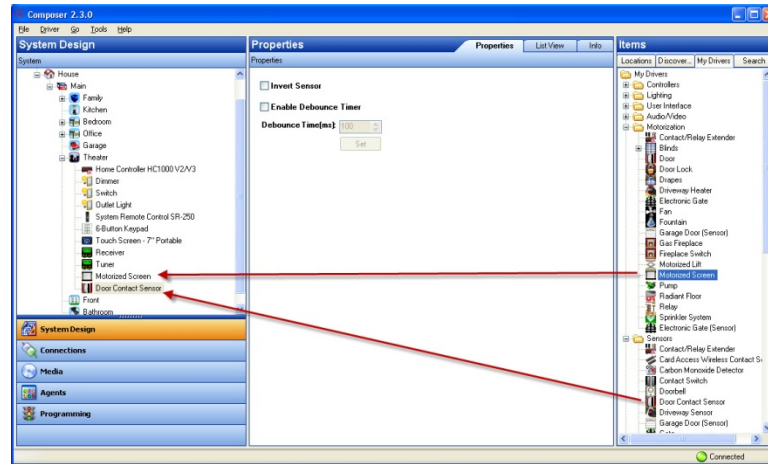


7 Add Motorized devices or Sensors, if applicable, to the selected room.

Example: From the My Drivers tab, add a **Motorized Screen** and a **Door Contact Sensor** to the Theater room from the online database.

- Select **Theater** in the project tree.
- In the *My Drivers* tab under *Motorization* (scroll down), double-click **Motorized Screen**.

- c In the *My Drivers* tab under *Sensors* (scroll down), double-click **Door Contact Sensor**.



- 8 **Add an HVAC**, if available, to the selected room.
 - Add a Security Panel, if available, to the selected room.
 - Add an IP Camera, if available, to the selected room.
 - Add a pool and spa controller, if available, to the selected room.
 - Add Network File Storage, if available, to the selected room.
 - Repeat Steps 6–8 as needed for each room.
- 9 Identify and test the connections. See the [Composer Pro User Guide](#) for configuration and connection information.

Composer Pro design methods

Planning a Composer Pro project: Create a plan

Before you start to work on a new Control Composer project (especially if you're new at it) it's best to create a plan.

Tip: Some of our dealers use a variety of design tools, for example, AVSnap, Microsoft Visio, AutoCAD, and conceptdraw. AVSnap seems to be the cheapest and the most popular tool.

Here are some suggestions:

- If you haven't done so yet, we strongly recommend that everyone who installs and configures Control4 products take the 'Tech 1 Training' class provided by Control4. Send an email message to training@control4.com or go to <http://dealer.control4.com/dealer/training> (dealer login required) to find out how to enroll.
- Sign up for the Control4 Online Training sessions.
- Check out the Control4 Troubleshooting Guides, Best Practices, and other materials on the Training site in the dealer portal.
- Check the Control4 [Knowledgebase](#) and dealer [forums](#).
- Review the documentation on the [Control4 dealer website](#).
- Check out the Training web page on the dealer website.

Home automation design methods

Prerequisites to creating a design

Before you begin to create a design for a Control4 system, it's a good idea to create a plan so you know all of the devices in each room, how many rooms there are, how many floors, buildings, the home network structure, and so on.

Guidelines of system design

Consider the following items before you start to design a project for a Control4 automated home.

- **Use existing or custom device drivers**—Every device in the system needs a corresponding device driver so the Control4 system can control the device. When designing the system, each time you add a physical device to a room, for example, a DVD player, the corresponding device driver must be added to the project in the project tree. Device drivers for Control4 products are installed in Composer Pro. Device drivers for hundreds of third-party devices are available through an online database, and can be added easily to the project when the driver is available. If a driver for the model of a device does not exist, you can use the Driver Creation Wizard (available through a menu option) or DriverWorks (a free add-on utility) to create a custom driver.
- **Connect and identify the devices to the network**—In the Composer project, you identify all physical connections to the system, including control, AV (audio, video), network, and other connections. Use the Connections view in Composer to complete this task.
- **Register the system at my.control4.com**—Control4 recommends that you register each system you install at customer.control4.com so you can maintain the system software using the online downloads.

***Important:** Only registered systems can use all of the media services that are available to Control4 customers. System registration is one of the essential steps in enabling remote access to the system.*

- **Set up the media**—Identify any existing media on the system using the Media view in Composer. The Media view helps you search or scan stored media and auto-generate a list of local broadcast channels and stations. After you've searched or scanned in the existing media, you can test the Media access through the navigation devices (also known as Navigators), and you can create playlists also.
- **Configure properties**—Manage a device's settings in the Properties pane.
- **Program events and actions**—Define interactions between system events and the actions of other devices in the *Programming* view. For example, when a projector turns on, it can trigger other devices in the Home Theater to turn on or off causing an event to occur.
- **Create variables and agents for use in programming**—Advanced setup options are available in Composer: string, Boolean, device properties, variables, delays, and agents. Using these options, you can configure, for example, a 3-way switch, turn equipment on and off with proper delay times, create lighting scenes, and other customized programming between devices.
- **Customize the Navigators**—Complete the registration process and enable remote access. Work with your customers to set up screen savers and other custom functions.

Using Composer views to build a project

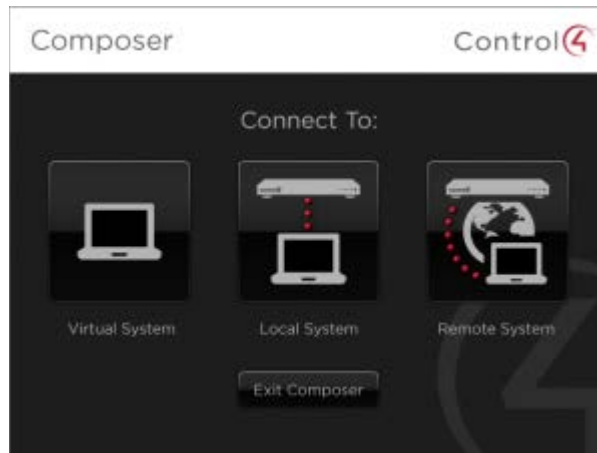
Composer Pro lets you set up a Control4 system using different Composer views for different tasks. In Composer views, you can add devices, make connections, set up media, and program the system using devices and agents.

In Composer views, you have the flexibility to follow any setup path you choose as long as a controller is the first device you add to the project.

Note: Before you start to create a project, you will need to understand how to use the views.

To use Composer views:

- 1 Start Composer Pro and connect to a Director.



- 2 The *System Design* view appears by default. Notice that the *System Design*, *Properties* and *Items* panes appear in the screen. Each view has its own set of panes.

Making and testing the connections

Connecting the hardware

Before you can design and build a project in Composer Pro, first start by installing the devices and connecting the cables on every device that will be a part of the Control4 system. Otherwise, the devices will not be acknowledged by Composer and Director.

If you purchased equipment from Control4, ensure that you've carefully read the installation or setup instructions and/or user guides included in the box. These instructions will show you how to attach the cables, and in some cases, how to set up and use the device in Composer Pro.

Testing the device connections

When you test a Control4 device connection, you are ensuring that the connection is successful so you don't encounter any problems with devices not functioning later on. You must perform this action for customer satisfaction. For information about identifying devices and device connections, see the [Composer Pro User Guide](#).

The following types of connections may need to be tested on the Control4 system:

- **Network connections**—Defines the devices that use a network address. Network connections include IP and ZigBee or ZigBee Pro devices.
- **Control connections**—Defines the control connection between a device and the controller. Control connections include contacts, relays, serial, and IR-controlled (infrared) devices.
- **Audio and video connections**—Defines the devices that have audio and/or video signals.
- **Room connections**—Defines the video, audio, or video/audio end points and the video/audio or audio volume for the selected room.

Testing network connections

In the *Connections* view, click the **Network** tab > **IP Network**. The list of devices appears.

Make sure there is a network address for every item in the list. If there is not, see “Cannot identify the device to the network” in the [Composer Pro User Guide](#).

Testing control and AV connections

In the *Connections* view, click the **Control/AV** tab. This list of devices appears.

Testing room connections

In the *Connections* view, click the **Control/AV** tab. This list of devices appears in the Room Connections pane.

Registering the Control4 system

Every system must be registered at customer.control4.com to maintain the system software through online downloads, and to use all of the media features in the system (for example, the Control4 online media database for scanning music). System registration is also one of the essential first steps in enabling remote access to the system.

After you complete the initial Control4 system setup (adding devices to a project, identifying them automatically for devices released with OS 2.3.0 or later, and making software connections for each device), you are ready to register the system and set up the media. “Setting Up the Media” is discussed in the [Composer Pro User Guide](#).

You can register the system either from Composer or by using a Navigator. See the sections below.

Register the system at customer.control4.com

Control4 recommends that you register each Control4 system you install at customer.control4.com to maintain the system software easily through online downloads. Only registered systems can use all of the media services available.

System registration, which includes setting up a customer.control4.com account, is required to use most of the media services that are available in the Control4 system, for example, scanning media into the system (so that you don’t need to manually add individual music files).

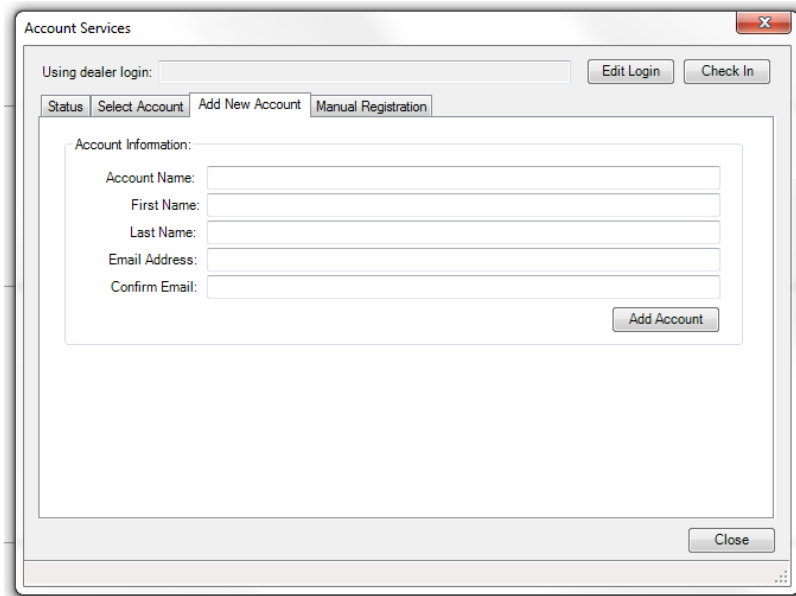
You can register the system now through Composer, or later through a Navigator if you customize the Navigator. You may have already registered the system in Composer to set up media. If not, you can register the system using any Internet connection and one of the Navigators that is connected and identified.

Register the controller from Composer Pro

Composer Pro lets you register the controller to a customer account without having to log in to the customer's account. You can now create a new account and register the controller in one step, register to an existing account found under your dealer of record, or manually register the controller using the 10-digit code from the customer's account page under *Controller registration*.

To set up a new customer.control4.com account and register this Control4 system:

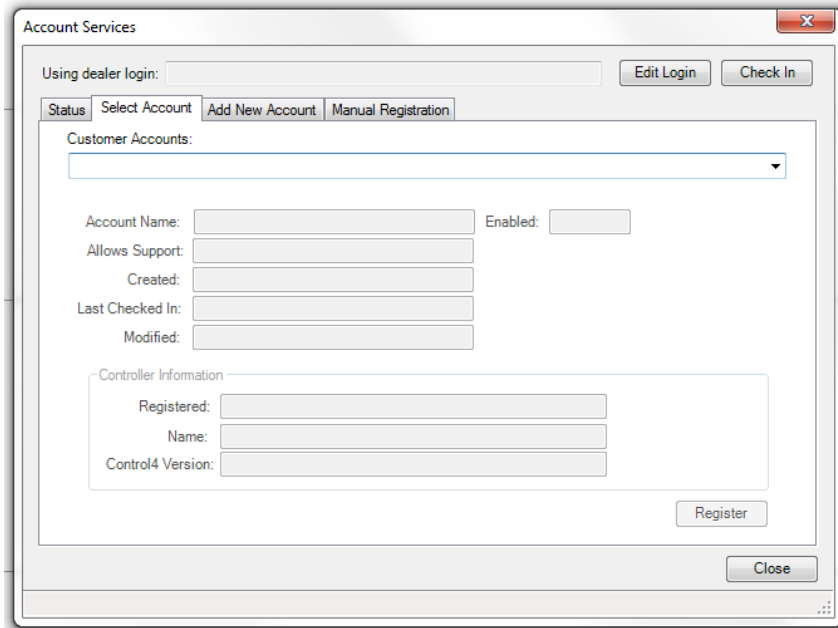
- 1 In Composer Pro, go to **Tools > Account Services**.
- 2 Click the **Add New Account** tab to create a customer.control4.com account and start the registration process for the user.



- 3 Complete the *Account Information* form for the user, and then record the Account Name and Email Address for the user's future reference.
- 4 Click **Add Account** to create an account for this Control4 system and register the controller to the new account.

To register the system to an existing customer account:

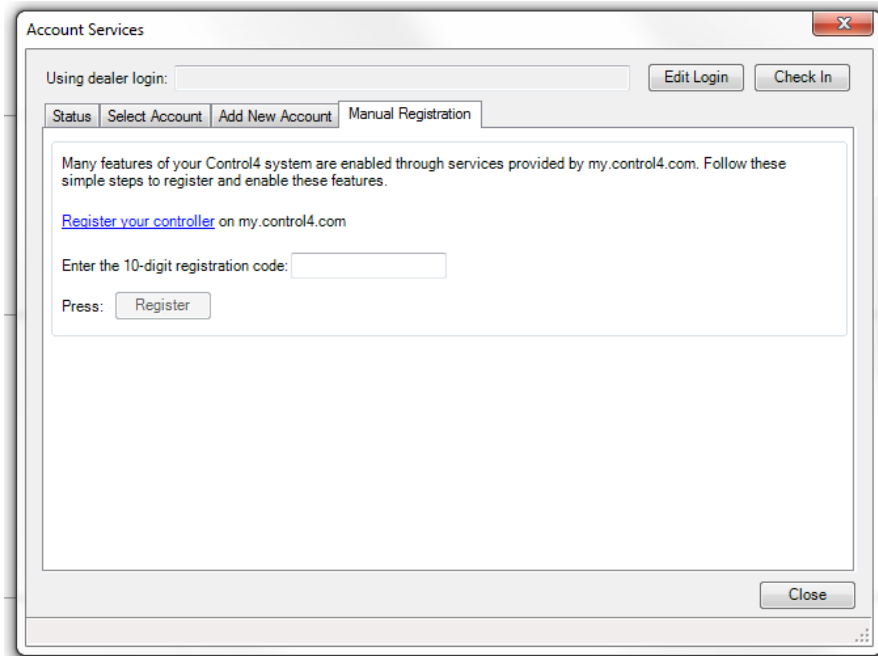
- 1 In Composer Pro, go to **Tools > Account Services**.
- 2 Click **Select Account** and select the existing account you wish to register to in the list of *Customer Accounts*.



Note: If the existing customer account does not show up in the Customer Accounts list, have the customer log in to their account and verify their dealer of record is pointing to your dealer account.

To manually register the system to an existing customer account:

- 1 In Composer Pro, go to **Tools > Account Services**.
- 2 Click **Manual Registration**.



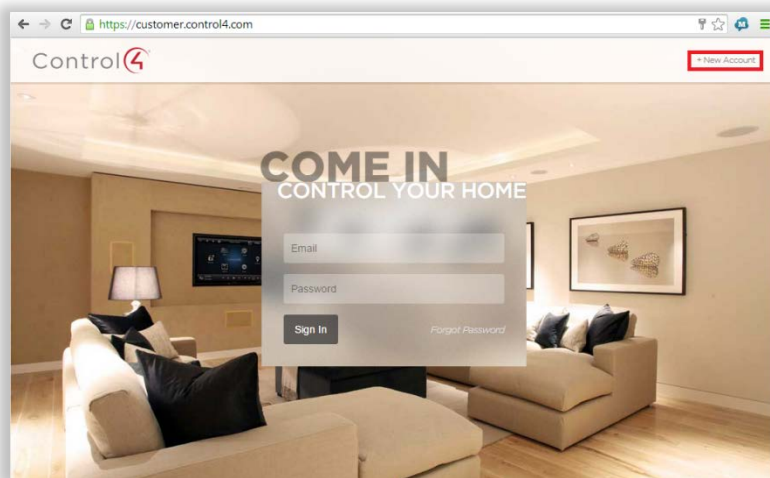
- 3 From the customer.control4.com account page, copy the 10-digit registration code found under My Devices > Controller Registration > Register New Controller. This code is time sensitive and must be used within **10 minutes**. It provides a temporary code used to exchange the security parameters and create a secure connection between customer.control4.com and the controller.
- 4 On the Account Services page, click the text box and paste the **10-digit registration code** in the box.
- 5 Click the **Register** button on the Account Services page in Composer (now enabled) to complete the registration. The Current Status changes to 'Registered.'

Register the controller from a Navigator

Important: To complete the registration from a Navigator, the Navigator must be installed, connected to a controller, and identified in the system.

To use a Navigator to set up a customer.control4.com account and register this system:

- 1 Go to customer.control4.com.
- 2 Click **New Account** at the top of the screen.



- 3 Complete the **Create Consumer Account** form for the user according to the instructions on the page, and then record the Account Name, E-mail Address and Password for the user's future reference. **Note:** It's important that the information entered here is the customer's, not the dealer's.
- 4 Click **Create Account** to create an account for this system.
- 5 On the Complete Registration page, click **Yes**.
- 6 On the Controller Registration Confirmation page, copy or write down the **10-digit registration code** displayed. This code is time-sensitive and must be used within **10 minutes**. It provides a temporary code used to exchange security parameters, and set up the ability to create a secure connection between my.control4.com and the controller.
- 7 Go to the Navigator's main menu (Home Page), and press **Settings > Registration**.
- 8 Select the text box in Enter Code, and then enter the **10-digit registration code**.
- 9 When you are finished, tap **Done**.
- 10 Select **Activate**. When activation is completed, the user can use all media services, such as the online media recognition service.

- 11 (Optional) While you are here, you may want to enable **Remote Access**. Select **Service Connection > Yes**. This allows Control4 access for system updates and is a required step in enabling user remote access.

Setting up a 4Sight subscription

Use the Internet to set up a 4Sight subscription. This feature enables a Control4 system user to log in to the Internet and manage their Control4 system on the web. Consumers will need 4Sight to use Anywhere Access also.

Note: 4Sight subscriptions are sold separately.

Prerequisites

- 1 Design and set up the project.
- 2 Register the Control4 controller and the system owner.

When a 4Sight subscription has been obtained for the Control4 system, this setup can be done by the homeowner or installer. The installer or a Control4 representative should be able to provide information about how the homeowner can set up a customer account. The [Control4 System User Guide](#) or [Account Setup](#) provides that information for the homeowner.

To set up a 4Sight subscription at customer.control4.com:

- 1 Obtain a **4Sight subscription code** for the system (sold separately).
- 2 Log in to customer.control4.com using the homeowner/user email address and password.
- 3 From the My Account tab, select the **Subscriptions** view.
- 4 Enter the **4Sight subscription code** provided by your Control4 representative, and then click **Activate**.

*Tip: Scroll down and view **Account Subscriptions** to see which subscriptions you already have.*

Managing and assigning Composer Pro licenses

Use my.control4.com to set up additional Composer Pro Licenses for dealers and their employees who use Composer Pro. You must do this before you run Composer Pro.

Notes

- Controller registration is separate from a Composer Pro License.
- You cannot assign Composer Pro Licenses to consumer accounts; these are for dealers and their employees only.
- Thirty days after the license is activated, you will be notified to renew the license. You can choose not to, or you can extend the period another 30 days.

Prerequisites

- Composer Pro must be installed or updated to the current release.
- A valid dealer account must be set up.
- A valid dealer sub-account that the dealer account manages can also be used.
- Access to my.control4.com.

You can find comprehensive information about this subject in [Managing Dealer Accounts in my.control4.com](#).

Where to go from here

This Control4 *Composer Pro Getting Started* guide gave you:

- An overview of Composer: how to install and start it, how to access a Director, and includes a preview of the Composer interface (views, menus, properties, panes, etc.).
- An overview of how to start designing your project with suggested tools.
- An overview about connections and how to test devices.
- How to register the Control4 system.
- How to set up a 4Sight subscription.
- How to set up Remote Access.
- Examples about how to build a system in System Design.

More detailed and advanced sections ([Composer Pro User Guide](#)) are outside the scope of this document but you can find them on the [Dealer Portal](#).

The advanced sections give you specific details about:

- Setting Up Media
- Creating Device Drivers
- Making Connections
- Verifying Connections
- Configuring Devices
- Configuring Properties
- Basic Programming
- Advanced Programming
- Customizing Navigators
- Installing Devices
- Troubleshooting the System

Contacting Control4 technical support

Should you encounter any problems while using Composer Pro, please contact Control4 Technical Support for assistance.

- Phone: 1-888-400-4072
- E-mail: support@control4.com

Other resources

Also check out the [Control4 Forums](#) or [Knowledgebase](#).

Project build example using system design

The following sample project steps you through the creation of a Control4 project using Composer Pro. This example assumes that you've already saved the project as a backup, and covers basic device additions to the project, but not connecting or identifying the components. This example project:

- Includes a theater room
- Adds keypad and electrical interfaces
- Adds AV components
- Adds a touch screen

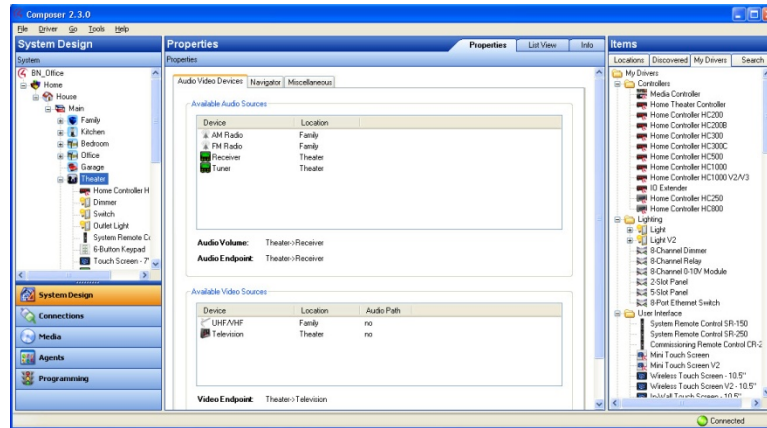
Adding a controller

When setting up a system, first add the controller to the list. You must attach a controller to each television you add to the Control4 system.

To add a controller:

- 1 Start Composer and connect to a director.
- 2 In the *System Design* pane's project tree, select the **Theater** room.
- 3 In the *Items* pane, click the **My Drivers** tab.
- 4 In the *Controller* category, double-click **Home Controller HC250**. The controller is added to the project's Theater room.

Note: If you installed this version of Composer Pro on a computer that already had an older version of Composer Pro, right-click anywhere in the **My Driver** tab, then click **Restore Default List**. The My Driver list updates.



Adding keypad and electrical interfaces

After adding a controller, you can add dimmers, switches, keypads, outlets, and a remote control.

To add keypad interfaces:

- 1 In the *System Design* pane's project tree, select the **Theater** room.
- 2 In the *My Drivers* tab, do the following:
 - a Under Lighting > Light (v2), double-click **Adaptive Phase Dimmer** to add it to the project, and then rename it to **Dimmer** in the project.
 - b Under Lighting > Light (v2), double-click **Switch**, and then rename it to **Light Switch**.
 - c Under Lighting > Light (v2), double-click **Wireless Outlet Switch**, and then rename it to **Television Outlet Switch**.
 - d Under User Interface, double-click **System Remote Control**.
 - e Under User Interface, double-click **Configurable Keypad**.

Tip: Use a descriptive name for items added to a project. You can right-click and select **Rename**, or you can begin typing right after the item is added. For example, if you have two dimmers in a room, you could name one "Wall Dimmer" and the other "Ceiling Dimmer." This helps you clearly identify items later when making connections.

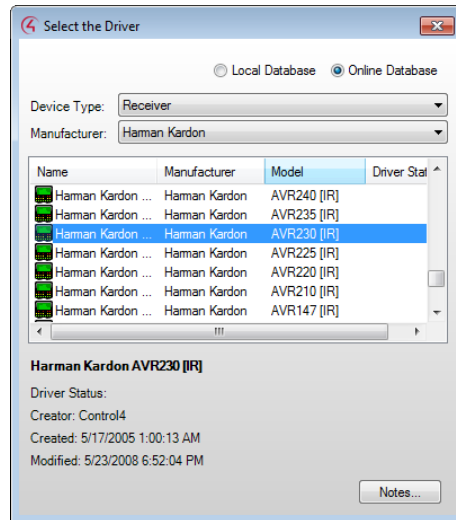
Adding AV components

After adding interfaces, you can add the main components of the home theater.

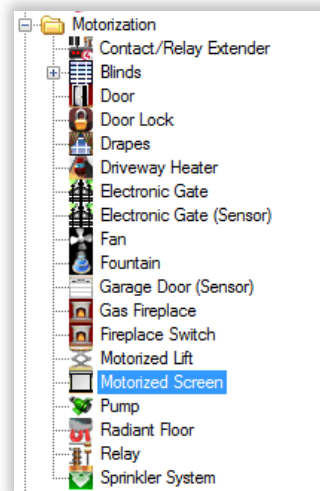
To add AV components:

- 1 In the *System Design* pane's project tree, select the **Theater** room.
- 2 Add a receiver to the room:
 - a In the *My Drivers* tab, under *Audio/Video*, double-click **Receiver**.

- b In the dialog box that opens, select **Online**, select the manufacturer **Harmon Kardon**, then double-click **AVR230[IR]**. The receiver is added to the project.

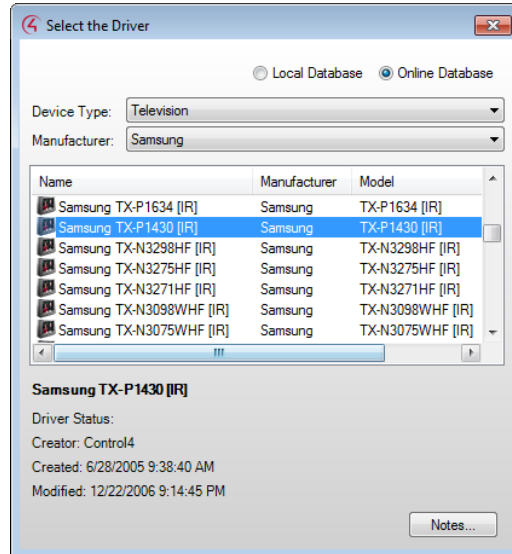


- 3 Add a retracting movie screen to the room:
 - a In the *My Drivers* tab, under *Motorization*, double-click **Motorized Screen**.



- b Under *Sensors*, double-click **Door Contact Sensor**.

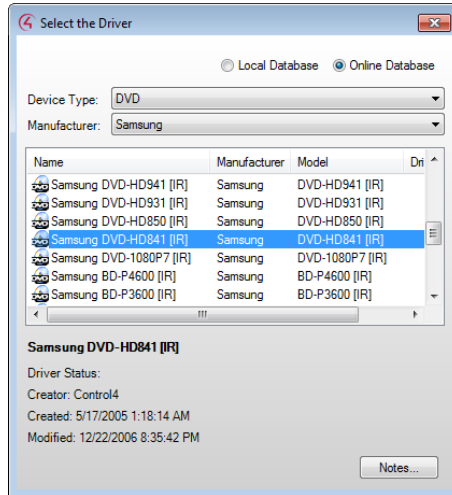
- 4 Add a TV to the room:
 - a Under *Audio/Video*, double-click **Television**.
 - b In the dialog box that opens, select **Online Database**, select the manufacturer **Samsung**, then double-click **TX-P1430[IR]**. The TV is added to the project.



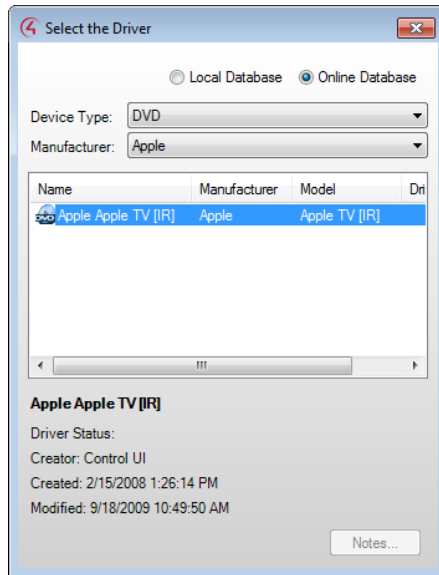
The Cable TV and UHF/VHF objects are also added to the project, to enable you to scan for cable and broadcast channels.



- 5 Add a DVD player to the room:
 - a Under *Audio/Video*, double-click **DVD**.
 - b In the dialog box that opens, select **Online Database**, select the manufacturer **Samsung**, and then double-click **DVD HD841 [IR]**. The DVD is added to the project.



- 6 Add online TV to the room:
 - a Under *Audio/Video*, double-click **DVD**.
 - b In the dialog box that opens, select **Online Database**, select the manufacturer **Apple**, and then double-click **AppleTV [IR]**. Apple TV is added to the project.

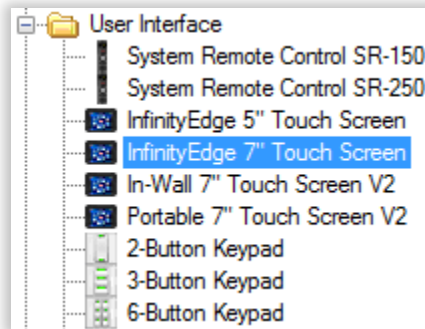


Adding a touch screen

After adding AV components, add a touch screen.

To add a touch screen:

- 1 Under *User Interface*, double-click **InfinityEdge 7" Touch Screen**. The touch screen is added to the project.



Finishing the project

After adding devices to your project, you will still need to identify, connect, and test the devices. For more information, see *Connecting and verifying devices* in the [Composer Pro User Guide](#).

Glossary

#

4Sight: An Internet service that provides a connection to the home automation system any time and from any place worldwide.

A

AAC: Advanced Audio Coding. A successor to the MP3 format. A standard, lossy compression and encoding scheme for digital audio. Touts better sound quality.

action: An activity that occurs when an event prompts it to do so.

agent: In Control4 programming, agents provide the ability to perform complex programming by using functional modules. There are various types of agents; for example, Announcements, Email Notifications, Scheduler, Lighting Scenes, Wakeup, etc.

Anywhere Access: Lets users access and control their Control4 systems remotely using a mobile device or tablet anywhere in the world.

AV: Audio Video

C

CD: (Compact Disc) - An optical disc that stores digital data. This format is compatible with Control4 products.

client: A software or hardware device that communicates to a server for feedback from the server via an application for the user.

command: A 'do' statement; actions the Director communicates to a device.

Composer: The Control4 software used to design and define a Control4 home automation system.

Composer Pro: Composer is used to set up and configure Control4 devices to communicate with each other in a home automation system.

conditional: An 'if' statement that asks true/false questions which are acted upon in Composer programming.

configuration worksheet: Used in Composer software training to design and configure a project in Composer.

connection: Devices that are bound or linked together in Composer so they can communicate with each other.

contact: Contacts are generally used to monitor the status of something (door, window, water sensor, etc.) and can be connected through a security panel or directly using a Control4 controller or Contact/Relay Extender. Contacts connected to a Control4 controller or Contact/Relay Extender can be configured either as NC (normally closed) or NO (normally open).

Control4 App: A Control4 graphical Navigator that runs on mobile devices or a PC or tablet.

Control4 system: A home automation system designed and developed by Control4.

controller: The main device that makes home automation possible. There may be multiple controllers within a Control4 system. The controller that runs Director is referred to as the primary controller.

D

Detective Suite: A set of tools that perform diagnostics tests on the Control4 system.

device: A component that requires a device driver; code that is used to allow the Control4 system to work with that device.

device driver: Every device in the Control4 system needs a corresponding device driver to control the device.

DHCP: DHCP (Dynamic Host Configuration Protocol) - A protocol used between a network client and a DHCP server (usually a router or access point) that dynamically assigns IP addresses from a pre-defined list to clients on a network.

Director: Each Control4 controller ships with pre-installed Director software (Linux based) embedded in the device. The Director communicates with Control4 products and third-party products to enable home automation and interaction of devices. Director runs the Control4 devices. Composer Pro is the software used to connect to and program a system Director that resides on a controller.

DriverWorks: The DriverWorks SDK is used to create two-way drivers for audio video (AV) and non-AV devices.

DVD: (Digital Versatile Disc) – A media format for video and data storage.

E

end point: The end point is the final point (device) on the defined path over which audio and/or video content is routed to a room. An example of this would be a TV or receiver.

Ethernet: Uses Ethernet category 5 (CAT5 or CAT5e) wiring to transfer data. Ethernet uses a star network topology that allows multiple points to communicate to a single point. The Speaker Point® uses Ethernet to communicate to the Control4 controller.

event: An action; used to trigger Composer programming when programming Control4 devices.

F

file format: A format used by applications to store/read files.

FLAC: Supported by Control4 since software release 1.8, this is a free, open source, lossless audio codec format that supports tagging, cover art, and fast seeking. Audio is compressed with no loss in quality.

G

gateway: (router)- Provides a means of communicating between two separate networks.

H

home network: A network installed in the customer's home that provides an Ethernet or wireless connection so that Control4 devices can communicate with each other.

home automation system: The Control4 system: a line of home automation products that communicate with each other over Ethernet, WiFi, or ZigBee for a total home automation experience.

I

IR: Infrared light—Some network devices can be controlled by a wireless remote control that uses pulses of infrared light to send commands to the device.

L

Linux: An operating system used by several Control4 devices.

List Navigator: Menu options that are visible on a System Remote Control.

Live Connection: A term used in Composer Pro to indicate an actual connection to the network.

Loop: A type of conditional in programming; a 'while' statement; for example, "while the sprinklers are on..."

M

Media Manager: Media information (metadata) is stored in Media Manager and the media database on the primary home controller, which will permit users to view the media from the Navigators.

MP3: A music format that makes streaming audio available.

MP4: An audio and video format. Can also store images and subtitles.

N

Navigator: A Control4 Navigator used with the Control4 system to control lights, music, videos, etc. Navigator is software that the customer interacts with using a System Remote Control, on-screen Navigator, Control4 apps, or touch screen.

O

On-Screen Device: Allows you to select the controller in a room that controls the source for the on-screen display.

P

playlist: A list of songs compiled in a list. The list can be compiled by songwriter, album, song type, or any combination of the above.

Power Over Ethernet (POE): Network cabling that provides Ethernet connectivity and device power over a single cable. Commonly used for Control4 devices.

programming: A machine-readable artificial language used to express computations that can be performed by a device.

project tree: A tree view in Composer where the project is layered by the larger branches (Home, Office, etc.) and then the lower branches (floor, rooms, etc.), and finally to the leaf level (drivers).

R

ramp rate: The rate that a dimmer ramps up its voltage.

relay: An electrical switch that opens and closes. A relay is controlled by another electrical circuit.

remote access: The ability to access a device from a remote location.

Remote Director: Connects you to the home network while working in Composer from a remote location.

retrofit: The ability to set up a home automation system in an existing structure or home. Compare this with new building construction.

RJ-45 jack: An eight-pin jack used to connect CAT5e network cables to Ethernet devices.

router: See *gateway*. Functions similar to an AP but with additional functionality for controlling the network; for example, coordinating traffic between different networks.

S

SNMP: An Internet-based protocol for networked systems that require monitoring of network-attached devices in case administrative intervention is required if those devices malfunction or go offline. SNMP uses a set of standards to manage networks.

serial-controlled device: Serial-controlled devices with an RS-232 interface and control protocol often have a higher level of controllability than IR-controlled devices. Examples of serial-controlled devices are projectors, multi-disc DVD changers, etc.

switch: An extension of a router that adds more Ethernet ports to support additional devices or clients on the local network.

system event: An action that causes another action; for example, if a projector turns on, it enables the other devices in the system that work with the projector.

system remote: System Remote Control

System Remote Control: A Control4 System Remote Control is a universal solution that replaces remote control devices from other manufacturers, and includes programmable buttons. This System Remote Control can access on-screen (graphical) Navigators.

T

touch screen: A touch screen is a home automation system Navigator that controls the home's lighting, music, videos, and other devices on the home automation system.

U

UI (user interface): The preferred term is Navigator. The Control4 interface used with Control4 devices to control home automation, for example, touch screens, Control4 apps, or on-screen Navigators.

universal remote: Universal remote control. A third-party remote control that can be programmed to replace other remotes in the home so that only one remote is needed, replacing all others. A Control4 System Remote Control is a type of universal remote control.

USB: (Universal Serial Bus) - A connector format used with USB drives that connect to a USB port on Control4 devices.

V

Virtual Connection: A term used in Composer Pro to indicate a connection outside the network.

Virtual Director: A connection to a virtual controller only (a PC is the Director host rather than the controller). Projects created or edited here are benign until the saved project is loaded onto a controller.

W

WiFi: Uses bi-directional wireless technology to transfer data. WiFi (wireless fidelity) devices "connect" to each other by transmitting and receiving signals on a specific frequency of the radio band using a wireless access point. This technology uses the star network topology. WiFi uses high bandwidth 802.11.

wired network: Uses Ethernet Category 5 (CAT5) wiring to send and receive data between devices connected to a network.

wireless access point: A router extension with an antenna that communicates with WiFi devices and clients in the home. A wireless hub that connects to the wired network, and distributes the wireless signal.

wireless switch: Uses ZigBee. UL listed dimmer. Single or multi-gang. Has an air gap to cut power.

WLAN: Wireless local area network.

Z

ZigBee: A wireless network that uses bi-directional wireless mesh network technology to transfer messages from one device to another. Unlike a star network topology where devices can only send messages to each other by sending them first to a single central device (which then delivers the message to the recipient device), a mesh network topology allows the devices to forward messages from one device to another, thereby extending the effective range of the network. Uses low bandwidth 802.15.4. 250 devices are allowed per controller but Control4 recommends a maximum of 125.

ZigBee Pro: The 1.1 version of ZigBee that provides improvements in standardization by: allowing more interoperability with other Control4 devices, support for home automation profiles, and improving the scalability of multiple ZigBee access points.

Index

- 10-digit registration code, 90
 - 4Sight
 - setup, 91
 - AAC, 37
 - Account Services, Tools menu, 59
 - Action, programming, example, 40
 - Actual playlist options, 38
 - Add Driver option, 44
 - Add locations, to project tree, 16
 - Agents, 85
 - options, 39
 - pane, 40
 - view, 14, 38
 - view, from Go menu, 47
 - AM/FM/XM, 37
 - Audio and video connections, 87
 - Audio end point, 21
 - devices, 21
 - Audio volume, 21
 - Audio/Video inputs, 33
 - Connections view, 35
 - Audio/Video outputs, 35
 - Available Devices pane, 36
 - Available inputs and outputs pane, 35
 - Back up Composer, 13
 - Back up, media information, 67
 - Backup, 43, 67
 - project, 65
 - Backup As, 43, 67
 - Backup to Cloud, 42
 - Basic tasks, 63
 - Bindings
 - Detective Suite, 54
 - Broadcast media types, 37
 - Build project
 - Composer views, 86
 - Build project, system design, 77
 - Buildings, Locations tab, 31
 - Cable TV, 37
 - CD, 37, 38
 - Certified Only, 30
 - Chat with Support, 61
 - Clear Media List, 38, 43
 - Clear Project, 42, 65
 - Cloud Management, 42
 - Command tab, 41
 - Communication options, installation, 8
 - Composer
 - back up, 13
 - exit program, 13
 - older versions, 80
 - register system, 88
 - same version as Director, 76
 - startup screen, 12
 - views, 14
 - Composer HE, 36
 - Composer ME, 36
 - Composer Pro
 - activation, 7
 - defined, 5
 - interface, 11
 - User Guide, 5
 - views, from Go menu, 46
 - Conditionals tab, 41
 - Configuration information, 62
 - load, 66
 - Configure properties
 - system design, 78
 - Connect hardware, 86
 - Connect physical devices, 77
 - Connect to Director, 42, 70
 - Connected items pane, 35
 - Connections
 - Identify, 36
 - make and test, 86
 - Connections view, 14, 33
 - from Go menu, 46
 - Connections, Properties pane, 62
 - Contact connection, 5
 - Contact Control4, 2, 93
 - Control & Audio Video Connections
 - pane, 33
 - Control A/V tab, Connections view, 33
 - Control and AV connection test, 87
 - Control connections, 87
 - Control inputs, 33, 35
 - Control outputs, 35
 - Control/AV tab, 34
 - Control4 apps, 99
 - Control4 System, 5
 - controller, 5
 - digital audio, 37
 - playlists, 38
 - registration, 6
 - Copy Existing Driver option, 44
 - Copyright, 2
 - Create New Driver option, 44
 - Create variables and agents
 - system design, 78
 - customer.control4.com
 - register system, 87
 - Customize Navigators
 - system design, 78
 - Dealer information, 33
 - Delete playlist, 43
 - Design project
 - connect devices, 77
 - programming, 77
 - Design system, 76
 - Detective Suite, 54
 - Device Actions pane, 41
 - Device connection status, Tools menu, 47
 - Device Control window, 18
 - Device driver, 5
 - Device driver, Driver Wizard, 46
 - Device drivers, 85
 - and system design, 77
 - My Drivers tab, 26
 - organize, 45
 - purpose of, 78
 - Search tab, 27
 - Device Events pane, 40
 - Device properties, 61
 - Device Properties, 22
 - device type, 30
 - Device type, 30
 - Devices, connect, 86
 - Devices, Properties pane, 62
 - DHCP, 7
 - DHCP status, 58
 - Digital audio, 37
 - Director, 5
 - connect to, 70
 - Director on local network, 72
 - live connection, 6
 - load configuration, 66
 - on local network, 12
 - remote connection, 6
 - same version as Composer, 76
 - virtual connection, 6
 - Virtual mode connection, 71
 - Directors dialog, 13
 - DIRECTV, 37
 - Disc changer, 37, 38
 - Disclaimer, 2
 - Disconnect from Director option, 42
 - Discover tab, 25
 - Discovery
 - Detective Suite, 54
 - Dish Network, 37
 - DNS server information, 58
 - Driver
 - Delete button, 45
 - My Drivers button, 45
 - Sort button, 45
-

- Driver Creation Wizard, 77
- Driver menu, 41
- Driver wizard, 35
- Driver, search, 45
- Drivers
 - Exit button, 45
 - Notes, 45
- DVD, 37
- DVD changer, 37
- DVD player, 38
- Edit Existing Driver, 35, 44
- EmberNet Upgrade, Network Tools tab, 51
- Endpoints, 21
- Ethernet cables, 61
- Ethernet connection, 8
- Event, programming, example, 40
- Example
 - add devices to theater room, 81
 - add DVD to theater room, 83
 - add motorized screen to theater room, 83
 - add receiver to theater room, 81
 - add thermostat, 84
 - add TV to theater room, 82
 - system design, 79
- Exit Composer, 65
- Export media list, 38, 43
- Export playlist, 38, 43
- File management options, 42
- File menu, 41, 67
- filter, 17
- FLAC, 37
- Floors, Locations tab, 32
- FM, 37
- Gateway, 9, 58
- GNU, 2
- Go menu, 41, 46
- Gracenote, 2
- Green icon, Network Tools dialog, 48
- Hard disk space, 7
- Hardware, connect, 86
- Hardware, install, 8
- Help menu, 41
- Help options, 61
- Home network requirements, 7
- Import DVD list from file, 43
- Import media list, 38, 43
- Import playlist, 38, 43
- Info pane, 32
- Install hardware, 8
- Installation
 - Composer Pro, 9
 - guidelines, 8
 - notes, 33
 - software, 9
- Internet connection, 7
- IP address, 7, 58
- IP addresses, Directors dialog box, 67
- IP Network Connections pane, 36
- IP Network tab, 49
- IP Network, Network Tools tab, 48
- IR, 5
- IR driver, 46
- Items pane, 15, 23
- iTunes, 36
- Knowledgebase, 7, 61
- LEDs, controllers, 9
- Legal notice, 2
- License, 7
- List View
 - pane, 22
 - tab, 64
- Load Project option, 42, 66
- Load Project, Virtual Director mode, 71
- local database, device drivers, 30
- Local driver database, 45
- Locale, 20
- Localization, 20
- Location
 - system design, 79
- Locations tab, 24, 31
- system design, 79
- Longitude/Latitude, 20
- Properties tab, 79
- Loops tab, 41
- MAC address, 58
- Manage Drivers dialog, 45
- Manage Drivers option, 44
- Media database, 36, 43
- Media Manager, 36
- Media menu, 41, 43
- Media Monkey, 36
- Media pane, 37
- Media types, 37
- Media view, 14, 36, 85
- Media view, from Go menu, 47
- Media, select from Navigators, 36
- Menu options, 41
- Model, device drivers, 30
- Movies, can't play, 21
- MP3, 37
- MP4, 37
- MPEG, 2
- My Drivers tab, 26
- my.control4.com, 7
- Navigator tab, 21
- Navigator, customize, 85
- Network address, 9
- Network addresses, address types, 36
- Network Configuration Wizard, 51
- Network connection, 6
 - TCP/IP, 35
 - test, 87
 - WiFi, 35
 - ZigBee, 35
- Network connections, 87
- Network requirements, 7
- Network tab, 35
- Network tab, Connections view, 33
- Network Tools dialog, 47, 48
- Network Tools window, 47
- Network, devices discovered, 36
- New playlist, 43
- New Playlist, 38
- New Project icon, 16
- NTP, 20
- Online database, 45
 - device drivers, 30
- Overview of, 5
- Physical connection, 6
- Physical connections, 33
- Playlist, types, 37
- Power sources, and installation, 8
- Program events and actions, 85
 - system design, 78
- Programming
 - Detective Suite, 54
- Programming view, 14, 40
- Programming view, from Go menu, 47
- Programming, actions and events, 40
- Project configuration information, 42
- Project configuration, back up, 68
- Project information, Properties pane, 62
- Project properties, 19, 61
- Project settings, 20
- project tree
 - filter, 17
 - search, 17
 - sync, 17
- Project tree, 6
 - add items to, 78
- Project, back up, 67
- Project, clear, 65
- Properties pane, 15, 19, 62, 85
- Properties tab, Properties pane, 62
- Properties, Composer, 61
- proxy, 30
- Push Settings from Project, 20
- Red icon, Network Tools dialog, 48
- Refresh Navigators, 43
- Refresh option, 43
- Register Composer, 10
- Register system, 6, 87
 - create project, 77
- Registration
 - from a Navigator, 90
- Relay connection, 5
- Remote Access, 7
 - add account, 75
 - requirements, 74
 - setup, 73
- Remote connection to Director, 74
- Remote Director, 13
 - connect to, 74
- Remove items from project tree, 64
- Rename items in project tree, 64
- Rename playlist, 43
- Restore default list, 80

- RJ-45 jack, 9
- Room connection
 - test, 87
- Room connections, 34, 87
- Room control, 33, 35
- Room properties, 61
- Room Properties pane, 21
- Room tree, 50
- Rooms, Locations tab, 32
- Router, 7, 9
- Routing tree, 50
- Same version, Composer and Director, 75
- Scheduler agent, example, 39
- Screen saver, 37
- Script pane, 41
- search, 17
- Search tab, device drivers, 27
- Serial, 5
- Serial driver, 46
- Set up media
 - project design, 78
- Simple Network Management Protocol, 68
- Site, Locations tab, 31
- SNMP, 68
- Songs, 38
- Songs, options, 38
- SSL, 20
- Start Composer Pro, 11
- Status information, Properties pane, 62
- Storage devices, external, 38
- Switch, 9
- sync, 17
- System design, 6
 - guidelines, 85
 - methods, 84
- System Design
 - Go menu, 46
 - pane, 15, 37
 - Properties tab, 79
 - view, 14
 - view, create project, 6
- System Diagnostics
 - Controller Networking tab, 58
 - Controller Performance History button, 57
 - Controller Performance tab, 57
 - Logging tab, 59
 - System Info tab, 58
 - Test Internet Connection button, 58
- System Manager, 13
- System Manager dialog
 - Network tab, 51
 - Status tab, 52
- System Owner information, 32
- System registration, 6
- System security, 20
- System setup, 6
- Tag media files, 43
- TCP/IP, 5, 7
- Technical Support, contact, 93
- Test connection, 86
- Third-party devices, install, 8
- Timezone, 20
- Tools menu, 10, 41, 47
- UHF/VHF, 37, 83
- Update Manager, 9, 60
- Update system, 60
- Upgrade Composer Pro, 9
- USB drive, 37
- User interface, 5
- Variables, 85
- Video end point, 21
- Video resolution, 7
- Virtual Director, 12
- WAP, 7
- Windows 7, 5
- Windows Media Player, 36
- Windows Vista, 5
- Windows XP, 5
- Wireless Access Protocol, 7
- WMA, 37
- Yellow icon, Network Tools dialog, 48
- ZigBee
 - signal strength, 50
- ZigBee Network
 - Network Tools tab, 48
 - tab, 49
- Zip code, Properties tab, 79