



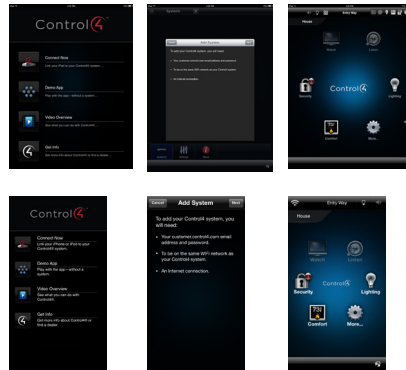
# Control4® MyHome® Quick Reference

## Control your home from your smartphone, tablet, or PC

Welcome to the exciting world of home automation. Your Control4® MyHome® app on your Apple® or Android® smartphone or tablet or on a Windows® PC can control everything in your Control4 home automation system. Turn on your TV in the family room for your kids while you visit with friends on your patio. Play music throughout the house from the palm of your hand. Lock all of the doors at night from your bedroom. Control everything from your office PC. You can do all this and more using MyHome.

## Getting started

- 1 Download the MyHome app from your app store to your smartphone or tablet or look for the MyHome download in your MyControl4 account (for a PC).
- 2 Tap or double-click to open **MyHome**.
  - **Tablet (shown right) or smartphone (shown below).** Set up MyHome on your tablet or smartphone. At the Welcome screen, tap **Connect** and follow the instructions on the screen to add your system to MyHome.
  - **PC.** Wait for the connection and follow the instructions on your screen.
- 3 The MyHome screen appears (shown right). Start controlling your system.



## Change rooms before controlling your devices

The current room's name appears in the top part of your screen (shown right on a PC). The current room is Living.

To control a device, you'll need to change to the room the device is in.

If your screen shows that it's not in the room you want, just change rooms.

- 1 Tap or click the room name at the top of the screen, like Entry Way (shown below on an iPhone).



- 2 Tap or click **House**, the **floor**, and then the **room**. A star next to the room you can set as the default, so the Kitchen has a star next to it in this screen (shown right on a PC).



- Notice that the room name changes according to what you've chosen. Tap the device you want to control in that room.

## Using MyHome

Tap the screen to access the Home menu and your system.

- Select the room you want, and then tap an icon (see below). This varies, depending on what's installed and which room you are in.
- Tap what you want to control in the room:



Watch cable, satellite, or movies on your TV or projector.



Manage one or all lights and scenes.



Listen to the radio, music, Rhapsody®, etc.



Change settings, wakeups, remote service, etc.



Manage security cameras, door locks, etc.



Use 4Store apps to play games, check stocks, enhance your system, etc.



Manage thermostats, blinds, etc.

## Helpful tips

**Room off.** Tap or click the power button (below) to turn off what you're watching or listening to.

### Listen

- When you choose Listen, you won't see any activity on the TV, but you can listen to Cable, Dish Network or DirecTV music channels, radio stations, and more.
- You can access music stored on a PC or network storage using **Listen > My Music**.
- Music services such as Rhapsody, Pandora, and TuneIn display under **Listen**.
- Radio stations display under **Listen > Stations** (depending on your reception and what you've set up).

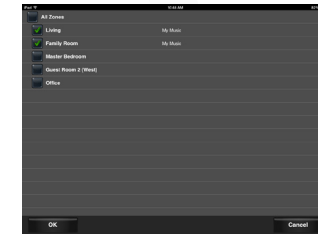
**Volume.** To control audio in other rooms, use the buttons in the media bar (see below) to change the current room's volume, mute the music, power off, and more. Smartphones show a slight variation.



- A** **Currently Playing**—Lists the song currently playing.
- B** **Back**—Skips the song back.
- C** **Pause/Play**—Pauses or plays the song.
- D** **Forward**—Advances the song.
- E** **Mute**—Mutes the song.
- F** **Volume Controls**—Increases or decreases the volume by percentage.
- G** **Power**—Powers off what is currently playing.
- H** **Zones**—Enables or disables media zones. You can add zones from here or in Listen.

**Media Zones.** To listen to audio in one or more rooms, use the zones icon. Add or remove zones by room. For example, to play music in the theater, you just add that room (zone). To listen to your favorite podcast in the kitchen, select to add that room.

Tap the **zones** icon to open the Add Rooms screen. Rooms are listed on the left by **All Rooms, floor,** and **room** (shown below). Select the **room** to play audio in the room or to stop playing audio in the room.



### • Watch

- If your dealer has set up favorites you'll see a Channels icon.
- If you have a media player, you'll see a Movies ic.

### • Comfort.

Thermostats appear in all rooms. You don't need to change rooms to control your thermostats.

### • Lights.

- Lists all of the installed Control4 lighting devices in your home, for example, keypads, dimmers, switches, or *lighting scenes* in the whole house or in individual rooms. Lighting scenes are preprogrammed sets of lights you can control by room or activity.
- Dimmers appear as slider bars where you can set light levels and intensity. Just select, hold, and slide.
- Light switches appear as On/Off toggles with no dimmer control. Just tap or click **On** or **Off**.
- Lighting scenes appear as a list of created scenes with specific names. Create, remove, or edit lighting scenes yourself.

- All.** Shows all lights and lighting scenes in the house.
- By room.** Shows the lights in a specific room.
- Lighting scenes.** Shows just the lighting scenes.



## Recommended Control4 products

- 4Sight® Service with Anywhere Access.** With MyHome and 4Sight, control your home on your Apple or Android smartphones or tablets...or even your PC, whenever you're away from home or vacationing abroad.

DOC-00095, Rev. A 2013 12-23 BN