




Control4® TV On-Screen Quick Reference

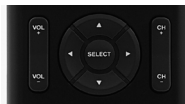
Control your home from your TV screen

Welcome to the exciting world of home automation. The SR-250, used with your TV screen, controls more than just TV channels and movies. Together, they control everything in your Control4® home automation system. Turn on the lights in your Kitchen from the Great Room. Heat up your pool with a touch of a button. Make sure all lights in the house are off from your Bedroom TV. The SR-250 and TV on-screen menu keep you in complete control of your home while relaxing in front of your TV.

Getting started

Use your remote's  button to access the Home menu on your TV.

Use the arrows and **SELECT** buttons on your SR-250 to change channels, select other devices, and interact with your system.



For more information, see *SR-250 Quick Reference*.

Change rooms before controlling your devices

The current room's name appears in the top part of your screen.

To control a device, you'll need to change to the room the device is in.

If your screen shows that it's not in the room you want, just select to change rooms.




To select a room:

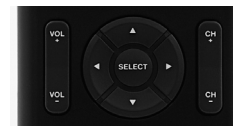
- 1 On your remote, press the **up** arrow button to highlight the current room on the TV on-screen display, and then press **SELECT**. Use the **arrow** buttons to select the room you want.
- 2 Select the floor, then in the right pane select the **room**. A star next to the room shows the current room. The Kitchen in the example (right) has a star next to it.
- 3 When the current room name changes, the menu for that room displays in the TV on-screen.
- 4 Select what you want to control in the room.



Using the TV on-screen menu

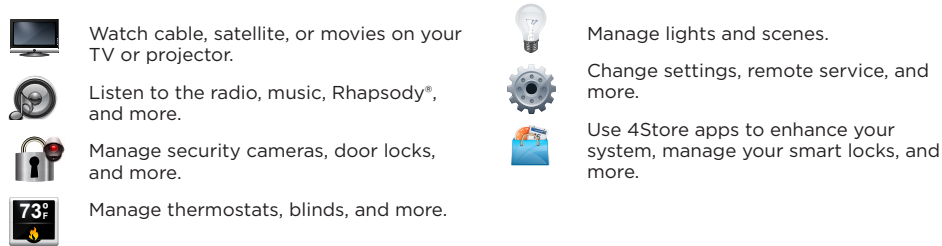
- 1 Press the  button on your remote, and change to the room you want on the TV on-screen (see instructions above). The menu for that room displays on your TV.

- 2 Use the **arrows** and **SELECT** buttons to choose an icon (see "Home screen icons" below):



TV On-screen menu icons

These icons appear on your TV on-screen menu to control your system (this varies, depending on what's installed and which room you are in).



Helpful tips


Room Off. To quickly turn off audio or video, press the **ROOM OFF** button on your remote.

Listen

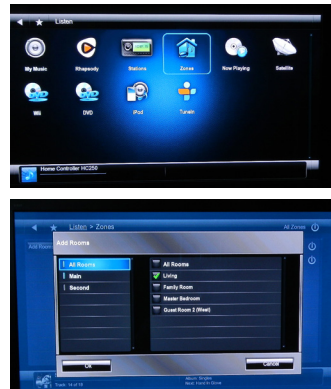
- When you choose **Listen**, you won't see any activity on the TV, but you can listen to Cable, Dish Network music channels, radio stations, and more.
 - You can access music stored shared on the network using **Listen > My Music**.
 - Music services such as Rhapsody, Pandora, and TuneIn display under **Listen**.
 - Radio stations display under **Listen > Stations** (depending on your reception and what you've set up).

Volume. To control audio in other rooms, use the volume **up** and **down** buttons in the Zones screen (see "Media Zones"). You cannot control volume from your remote unless you select Zones in the remote's display screen or you're listening to music such as Cable, Dish Network, or DirecTV.

Media Zones

To listen to audio in one or more rooms, select the  (zones) icon under **Listen**. Add or remove zones by room. For example, to play music in the Theater, you just add that room (zone). To also listen to your favorite podcast in the Kitchen, select to add that room.

- When you select the zones icon, rooms (zones), volume, and other controls are available.
- Use the **arrow** buttons on your remote to ramp the volume up or down, mute, or power off the selected room(s).
- Select **Add Rooms** to add other zones to what's playing.
- If you turn off the TV, zones will continue to play audio in other rooms until you turn those zones off.
- Stream separate music in several rooms according to each individual's taste.



Watch

- If you've set up favorites, you'll see a Channels icon.
- If you have a media player, you'll see a Movies icon.

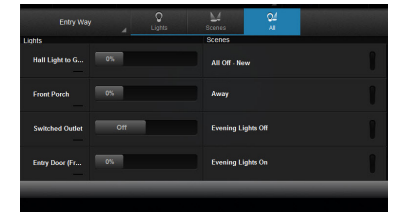
Comfort

Thermostats appear in the menu of all rooms. You don't need to change rooms to manage your thermostats.

Lights

This lists all of the installed Control4 lighting devices in your home; for example, keypads, dimmers, switches, or *lighting scenes* in the whole house or in individual rooms. Lighting scenes are preprogrammed sets of lights you can control by room (Bedroom) or activity (Party scene, Dining).

- Dimmers.** Shows slider bars. You can set light levels and intensity. Just select, hold, and slide.
- Light switches.** Shows on/off toggles with no dimmer control. Just select **On** or **Off**.
- All.** Shows all lights and lighting scenes for a room or house.
- By room.** Shows the lights in a specific room. Change the selected room to see the lights in that room or select **All Rooms** to see all lights in all rooms.
- Lighting scenes.** Shows the lighting scenes you or your dealer has created.



Recommended Control4 products

- Remote Recharging Station.** Keep your remote charged all the time.
- Control4 app and 4Sight Service.** With the Control4 app and 4Sight, control your home on your Apple or Android smartphones or tablets...or even your PC, whenever you're away from home or vacationing abroad. **Note:** With OS 2.6, the 'MyHome' title has changed to 'Control4 App.' You cannot use MyHome in OS 2.6, and you cannot use Control4 App in releases earlier than OS 2.6.